

Product datasheet

Recombinant human Casein Kinase 1 alpha protein
ab102102

2 Images

Overview

Product name Recombinant human Casein Kinase 1 alpha protein
Protein length Full length protein

Description

Nature Recombinant
Source Baculovirus infected Sf9 cells

Amino Acid Sequence

Accession [P48729](#)
Species Human
Molecular weight 62 kDa including tags
Amino acids 1 to 337

Specifications

Our [Abpromise guarantee](#) covers the use of **ab102102** in the following tested applications.

The application notes include recommended starting dilutions; optimal dilutions/concentrations should be determined by the end user.

Biological activity Specific activity is 120 nmol/min/mg
Applications Western blot
 Functional Studies
Purity > 80 % Densitometry.
 The purity of Casein Kinase 1 alpha protein (Active) was >80% as assessed by densitometry.
Form Liquid
Additional notes [ab91090](#) (Cow Casein full length protein) can be utilized as a substrate for assessing Kinase activity

Preparation and Storage

Stability and Storage Shipped on dry ice. Upon delivery aliquot and store at -80°C. Avoid freeze / thaw cycles.

Preservative: None

Constituents: 25% Glycerol, 50mM Tris HCl, 150mM Sodium chloride, 10mM Glutathione, 0.25mM DTT, 0.1mM EDTA, 0.1mM PMSF, pH 7.5

This product is an active protein and may elicit a biological response in vivo, handle with caution.

General Info

Function

Casein kinases are operationally defined by their preferential utilization of acidic proteins such as caseins as substrates. It can phosphorylate a large number of proteins. Participates in Wnt signaling. Phosphorylates CTNNB1 at 'Ser-45'. May play a role in segregating chromosomes during mitosis.

Sequence similarities

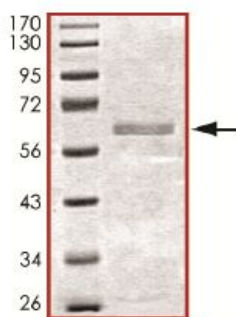
Belongs to the protein kinase superfamily. CK1 Ser/Thr protein kinase family. Casein kinase I subfamily.

Contains 1 protein kinase domain.

Cellular localization

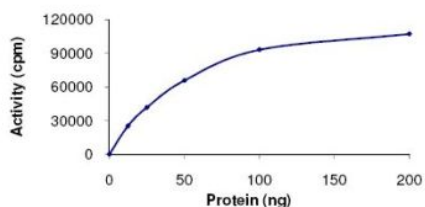
Cytoplasm. Cytoplasm > cytoskeleton > centrosome. Chromosome > centromere > kinetochore. Nucleus speckle. Localizes to the centrosome in interphase cells, and to kinetochore fibers during mitosis.

Images



SDS-PAGE - Active human Casein Kinase 1 alpha full length protein (ab102102)

ab102102 was determined to be >80% pure by densitometry. MWt 62 kDa.



Functional Studies - Active human Casein Kinase 1 alpha full length protein (ab102102)

The specific activity of ab102102 was determined to be 120 nmol/min/mg.

Please note: All products are "FOR RESEARCH USE ONLY AND ARE NOT INTENDED FOR DIAGNOSTIC OR THERAPEUTIC USE"

Our Abpromise to you: Quality guaranteed and expert technical support

- Replacement or refund for products not performing as stated on the datasheet
- Valid for 12 months from date of delivery
- Response to your inquiry within 24 hours

- We provide support in Chinese, English, French, German, Japanese and Spanish
- Extensive multi-media technical resources to help you
- We investigate all quality concerns to ensure our products perform to the highest standards

If the product does not perform as described on this datasheet, we will offer a refund or replacement. For full details of the Abpromise, please visit <http://www.abcam.com/abpromise> or contact our technical team.

Terms and conditions

- Guarantee only valid for products bought direct from Abcam or one of our authorized distributors