

Product datasheet

Recombinant human ERp72 protein ab113404

3 Images

Overview

Product name	Recombinant human ERp72 protein
Protein length	Full length protein

Description

Nature	Recombinant
Source	Escherichia coli

Amino Acid Sequence

Accession	P13667
Species	Human
Tags	His tag N-Terminus

Specifications

Our [Abpromise guarantee](#) covers the use of **ab113404** in the following tested applications.

The application notes include recommended starting dilutions; optimal dilutions/concentrations should be determined by the end user.

Biological activity	Activity Assay (>90U/mg)
Applications	SDS-PAGE Western blot Functional Studies
Purity	>= 85 % SDS-PAGE. Multi step chromatography
Form	Liquid

Preparation and Storage

Stability and Storage	Shipped on dry ice. Upon delivery aliquot and store at -80°C. Avoid freeze / thaw cycles. pH: 7.50 Constituents: 0.88% Sodium chloride, 0.03% EDTA, 0.6% Tris This product is an active protein and may elicit a biological response in vivo, handle with caution.
------------------------------	---

General Info

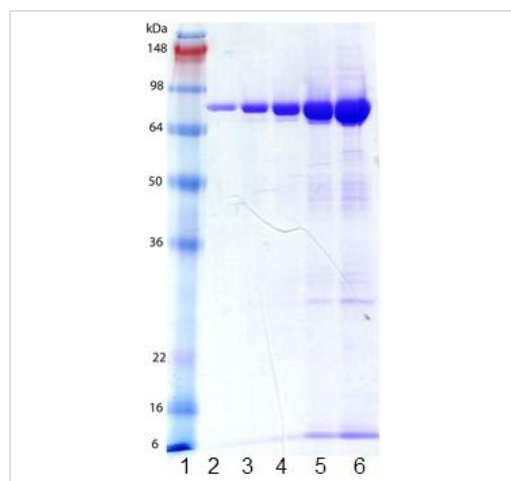
Sequence similarities

Belongs to the protein disulfide isomerase family.
Contains 3 thioredoxin domains.

Cellular localization

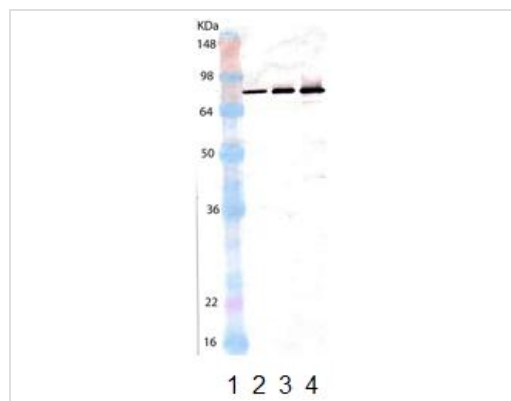
Endoplasmic reticulum lumen. Melanosome. Identified by mass spectrometry in melanosome fractions from stage I to stage IV.

Images



SDS-PAGE - ERp72 protein (Active) (ab113404)

SDS PAGE analysis of ab113404: Lane 1:
MW Marker, Lane 2: 0.25ug, Lane 3: 0.5ug,
Lane 4: 1.0ug, Lane 5: 2.5ug, Lane 6: 5.0ug



Western blot - ERp72 protein (ab113404)

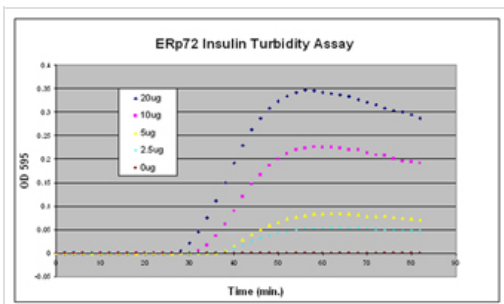
All lanes : an anti Human ERp72 antibody

Lane 1 : Molecular weight ladder

Lane 2 : Recombinant human ERp72 protein
(ab113404) at 0.025 µg

Lane 3 : Recombinant human ERp72 protein
(ab113404) at 0.05 µg

Lane 4 : Recombinant human ERp72 protein
(ab113404) at 0.1 µg



Functional Studies - ERp72 protein (Active)
(ab113404)

Activity Assay: Varying amounts of ab113404 were incubated with insulin in the presence of DTT. Activity is measured as an increase in absorbance over time.

Please note: All products are "FOR RESEARCH USE ONLY AND ARE NOT INTENDED FOR DIAGNOSTIC OR THERAPEUTIC USE"

Our Abpromise to you: Quality guaranteed and expert technical support

- Replacement or refund for products not performing as stated on the datasheet
- Valid for 12 months from date of delivery
- Response to your inquiry within 24 hours
- We provide support in Chinese, English, French, German, Japanese and Spanish
- Extensive multi-media technical resources to help you
- We investigate all quality concerns to ensure our products perform to the highest standards

If the product does not perform as described on this datasheet, we will offer a refund or replacement. For full details of the Abpromise, please visit <http://www.abcam.com/abpromise> or contact our technical team.

Terms and conditions

- Guarantee only valid for products bought direct from Abcam or one of our authorized distributors