

Product datasheet

Recombinant human Germinal Center Kinase protein ab89753

[2 Images](#)

Overview

Product name Recombinant human Germinal Center Kinase protein
Protein length Full length protein

Description

Nature Recombinant
Source Baculovirus infected Sf9 cells

Amino Acid Sequence

Species Human

Specifications

Our [Abpromise guarantee](#) covers the use of **ab89753** in the following tested applications.

The application notes include recommended starting dilutions; optimal dilutions/concentrations should be determined by the end user.

Biological activity The Specific activity of ab89753 was determined to be 290 nmol/min/mg.

Applications SDS-PAGE
 Western blot
 Functional Studies

Form Liquid

Additional notes [ab64311](#) (Myelin Basic Protein protein) can be utilized as a substrate for assessing kinase activity

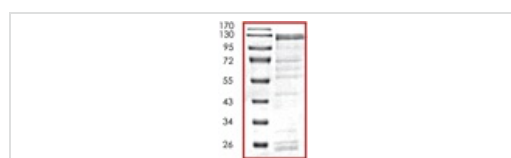
Preparation and Storage

Stability and Storage Shipped on dry ice. Upon delivery aliquot and store at -80°C. Avoid freeze / thaw cycles.
 Preservative: None
 Constituents: 25% Glycerol, 50mM Tris HCl, 150mM Sodium chloride, 0.25mM DTT, 0.1mM EGTA, 0.1mM EDTA, 0.1mM PMSF, pH 7.5
 This product is an active protein and may elicit a biological response in vivo, handle with caution.

General Info

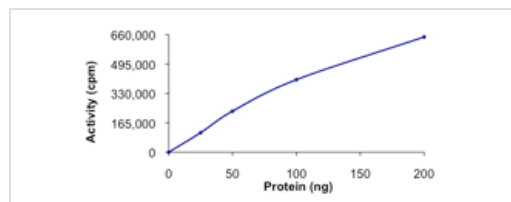
Function	Enhances MAP3K1 oligomerization, which may relieve amino-terminal mediated MAP3K1 autoinhibition and lead to activation following autophosphorylation. May play a role in the regulation of vesicle targeting or fusion.
Tissue specificity	Highly expressed in germinal center but not mantle zone B-cells. Also expressed in lung, brain and placenta and at lower levels in other tissues examined.
Sequence similarities	Belongs to the protein kinase superfamily, STE Ser/Thr protein kinase family, STE20 subfamily. Contains 1 CNH domain. Contains 1 protein kinase domain.
Cellular localization	Cytoplasm. Basolateral cell membrane. Golgi apparatus membrane.

Images



SDS-PAGE showing ab89753 at approximately 125kDa.

SDS-PAGE - Germinal Center Kinase protein
(Active) (ab89753)



Kinase Assay demonstrating specific activity of ab89753.

Functional Studies - Germinal Center Kinase protein
(Active) (ab89753)

Please note: All products are "FOR RESEARCH USE ONLY AND ARE NOT INTENDED FOR DIAGNOSTIC OR THERAPEUTIC USE"

Our Abpromise to you: Quality guaranteed and expert technical support

- Replacement or refund for products not performing as stated on the datasheet
- Valid for 12 months from date of delivery
- Response to your inquiry within 24 hours
- We provide support in Chinese, English, French, German, Japanese and Spanish
- Extensive multi-media technical resources to help you
- We investigate all quality concerns to ensure our products perform to the highest standards

If the product does not perform as described on this datasheet, we will offer a refund or replacement. For full details of the Abpromise,

please visit <http://www.abcam.com/abpromise> or contact our technical team.

Terms and conditions

- Guarantee only valid for products bought direct from Abcam or one of our authorized distributors