

Product datasheet

Recombinant human NEK11 protein ab125544

2 Images

Overview

---

<b>Product name</b>	Recombinant human NEK11 protein
<b>Protein length</b>	Full length protein

Description

---

<b>Nature</b>	Recombinant
<b>Source</b>	Baculovirus infected Sf9 cells

Amino Acid Sequence

<b>Accession</b>	<a href="#">Q8NG66</a>
<b>Species</b>	Human
<b>Molecular weight</b>	110 kDa including tags
<b>Amino acids</b>	1 to 645

Specifications

---

Our [Abpromise guarantee](#) covers the use of **ab125544** in the following tested applications.

The application notes include recommended starting dilutions; optimal dilutions/concentrations should be determined by the end user.

<b>Biological activity</b>	The specific activity of ab125544 was determined to be 25 nmol/min/mg as per activity assay protocol.
----------------------------	---

<b>Applications</b>	Western blot Functional Studies SDS-PAGE
---------------------	--

<b>Purity</b>	> 90 % SDS-PAGE. Assessed by densitometry.
---------------	---

<b>Form</b>	Liquid
-------------	--------

<b>Additional notes</b>	<a href="#">ab64311</a> (Myelin Basic Protein protein) can be utilized as a substrate for assessing kinase activity
-------------------------	---

Preparation and Storage

---

## Stability and Storage

Shipped on dry ice. Upon delivery aliquot and store at -80°C. Avoid freeze / thaw cycles.

pH: 7.50

Constituents: 0.004% EGTA, 0.002% PMSF, 0.004% DTT, 0.79% Tris HCl, 0.003% EDTA, 25% Glycerol, 0.88% Sodium chloride

This product is an active protein and may elicit a biological response in vivo, handle with caution.

## General Info

### Function

Possible role in S-phase checkpoint mechanism.

### Tissue specificity

Poorly expressed in cerebellum, trachea, lung, appendix, and uterus.

### Sequence similarities

Belongs to the protein kinase superfamily. NEK Ser/Thr protein kinase family. NIMA subfamily. Contains 1 protein kinase domain.

### Developmental stage

Predominantly expressed at S/G2/M phase.

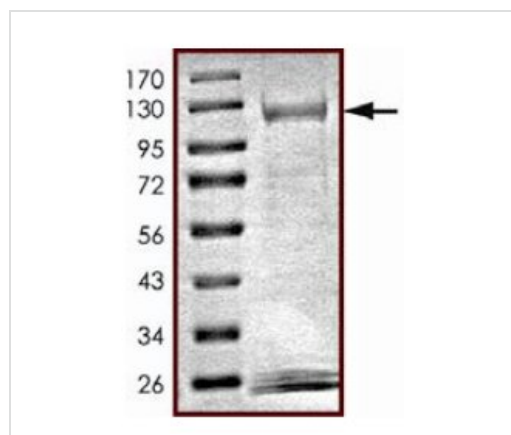
### Post-translational modifications

Phosphorylated.

### Cellular localization

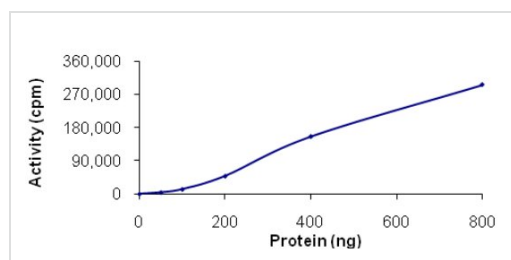
Nucleus. Nucleus > nucleolus. Nuclear during interphase but moves to the polar microtubules during prometaphase and metaphase. Accumulates in the nucleolus in G1/S-arrested cells.

## Images



SDS-PAGE - NEK11 protein (Active) (ab125544)

SDS-PAGE analysis of ab125544.



Functional Studies - NEK11 protein (Active)  
(ab125544)

The specific activity of ab125544 was determined to be 25nmol/min/mg.

### **Our Abpromise to you: Quality guaranteed and expert technical support**

---

- Replacement or refund for products not performing as stated on the datasheet
- Valid for 12 months from date of delivery
- Response to your inquiry within 24 hours
  
- We provide support in Chinese, English, French, German, Japanese and Spanish
- Extensive multi-media technical resources to help you
- We investigate all quality concerns to ensure our products perform to the highest standards

If the product does not perform as described on this datasheet, we will offer a refund or replacement. For full details of the Abpromise, please visit <http://www.abcam.com/abpromise> or contact our technical team.

### **Terms and conditions**

---

- Guarantee only valid for products bought direct from Abcam or one of our authorized distributors