

Product datasheet

Recombinant human PD-L1 protein ab167713

1 Image

Overview

|                       |                                 |
|-----------------------|---------------------------------|
| <b>Product name</b>   | Recombinant human PD-L1 protein |
| <b>Protein length</b> | Protein fragment                |

Description

|               |               |
|---------------|---------------|
| <b>Nature</b> | Recombinant   |
| <b>Source</b> | HEK 293 cells |

Amino Acid Sequence

|                         |   |
|-------------------------|---|
| <b>Accession</b>        | <a href="#">Q9NZQ7</a>  |
| <b>Species</b>          | Human   |
| <b>Sequence</b>         | FTVTVPKDLVVEYGSNMTIECKFPVEKQLDLAALIVWEMEDKNIQFV<br>HGEEDLKVQHSSYRQRARLLKDQLSLGNAALQITDVKLQDAGVYRCMISY<br>GGADYKRITVKVNAPYNKINQRILVVDVPTSEHELTCQAEGYPKAEVMT<br>SSDHQVLSGKTTTTNSKREEKLFNVTSTLRINTTTNEIFYCTFRRLDPEE<br>NHTAELVIPELPLAHPNER |
| <b>Molecular weight</b> | 26 kDa including tags   |
| <b>Amino acids</b>      | 19 to 238   |
| <b>Tags</b>             | His tag C-Terminus  |

Specifications

Our [Abpromise guarantee](#) covers the use of **ab167713** in the following tested applications.

The application notes include recommended starting dilutions; optimal dilutions/concentrations should be determined by the end user.

|                            |   |
|----------------------------|---|
| <b>Biological activity</b> | Measured by its ability to inhibit anti-CD3 antibody induced IL2 secretion in human T lymphocytes. The ED <sub>50</sub> for this effect is typically 0.6-5 µg/ml. |
|----------------------------|---|

|                     |                                |
|---------------------|--------------------------------|
| <b>Applications</b> | SDS-PAGE<br>Functional Studies |
|---------------------|--------------------------------|

|                        |               |
|------------------------|---------------|
| <b>Endotoxin level</b> | < 1.000 Eu/µg |
|------------------------|---------------|

|               |                    |
|---------------|--------------------|
| <b>Purity</b> | >95% by SDS-PAGE . |
|---------------|--------------------|

|                         |  |
|-------------------------|--|
| <b>Form</b>             | Lyophilised  |
| <b>Additional notes</b> | <p><b>For a recombinant rabbit monoclonal antibody to PD-L1 in IHC usage and KO validated - see <a href="#">ab205921 (clone 28-8)</a></b></p> <p><b>For a recombinant rabbit monoclonal antibody to PD-L1 in WB and ICC/IF usage - see <a href="#">ab174838 (clone EPR1161(2))</a></b></p> |

---

## Preparation and Storage

|                              |   |
|------------------------------|---|
| <b>Stability and Storage</b> | <p>Shipped at 4°C. Store at +4°C short term (1-2 weeks). Upon delivery aliquot. Store at -20°C or -80°C. Avoid freeze / thaw cycle.</p> <p>pH: 7.40</p> <p>Constituent: 99% PBS</p> <p>Note: Normally Mannitol or Trehalose are added as protectants before lyophilization.</p> <p>This product is an active protein and may elicit a biological response in vivo, handle with caution.</p> |
| <b>Reconstitution</b>        | <p>It is strongly recommended to reconstitute the lyophilized protein with 250 µL sterile deionized water to a stock solution of 400 µg/ml. Solubilize for 30 to 60 minutes at room temperature with occasional gentle mixing. Avoid vigorous shaking or vortexing.</p>   |

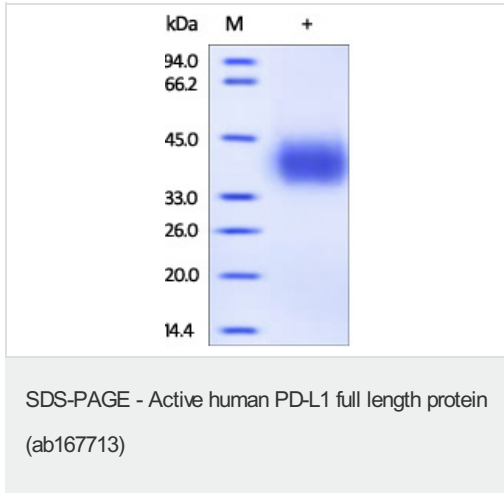
---

## General Info

|                              |   |
|------------------------------|---|
| <b>Function</b>              | Involved in the costimulatory signal, essential for T-cell proliferation and production of IL10 and IFNG, in an IL2-dependent and a PDCD1-independent manner. Interaction with PDCD1 inhibits T-cell proliferation and cytokine production. |
| <b>Tissue specificity</b>    | Highly expressed in the heart, skeletal muscle, placenta and lung. Weakly expressed in the thymus, spleen, kidney and liver. Expressed on activated T- and B-cells, dendritic cells, keratinocytes and monocytes.                           |
| <b>Sequence similarities</b> | <p>Belongs to the immunoglobulin superfamily. BTN/MOG family.</p> <p>Contains 1 Ig-like C2-type (immunoglobulin-like) domain.</p> <p>Contains 1 Ig-like V-type (immunoglobulin-like) domain.</p>  |
| <b>Cellular localization</b> | Cell membrane and Endomembrane system.  |

---

## Images



SDS-PAGE of reduced ab167713 stained overnight with Coomassie Blue.

**Please note:** All products are "FOR RESEARCH USE ONLY AND ARE NOT INTENDED FOR DIAGNOSTIC OR THERAPEUTIC USE"

### Our Abpromise to you: Quality guaranteed and expert technical support

- Replacement or refund for products not performing as stated on the datasheet
- Valid for 12 months from date of delivery
- Response to your inquiry within 24 hours
- We provide support in Chinese, English, French, German, Japanese and Spanish
- Extensive multi-media technical resources to help you
- We investigate all quality concerns to ensure our products perform to the highest standards

If the product does not perform as described on this datasheet, we will offer a refund or replacement. For full details of the Abpromise, please visit <http://www.abcam.com/abpromise> or contact our technical team.

### Terms and conditions

- Guarantee only valid for products bought direct from Abcam or one of our authorized distributors