

Product datasheet

Recombinant human PKC alpha protein ab55672

2 Images

Overview

---

**Product name** Recombinant human PKC alpha protein  
**Protein length** Full length protein

Description

---

**Nature** Recombinant  
**Source** Baculovirus infected Sf9 cells  
**Amino Acid Sequence**  
**Species** Human

Specifications

---

Our [Abpromise guarantee](#) covers the use of **ab55672** in the following tested applications.

The application notes include recommended starting dilutions; optimal dilutions/concentrations should be determined by the end user.

**Biological activity** Specific Activity 3333nmol/min/mg.

**Applications** Functional Studies  
 Western blot  
 SDS-PAGE  
 Other

**Form** Liquid

**Additional notes** [ab204856](#) (CREB peptide) can be utilized as a substrate for assessing kinase activity

Preparation and Storage

---

**Stability and Storage** Shipped on dry ice. Upon delivery aliquot and store at -80°C. Avoid freeze / thaw cycles.  
 Preservative: None  
 Constituents: 25% Glycerol, 50mM Tris HCl, 150mM Sodium chloride, 0.25mM DTT, 0.1mM EGTA, 0.1mM EDTA, 0.1mM PMSF, pH 7.5  
 This product is an active protein and may elicit a biological response in vivo, handle with caution.

## General Info

### Function

This is a calcium-activated, phospholipid-dependent, serine- and threonine-specific enzyme. May play a role in cell motility by phosphorylating CSPG4. PKC is activated by diacylglycerol which in turn phosphorylates a range of cellular proteins. PKC also serves as the receptor for phorbol esters, a class of tumor promoters.

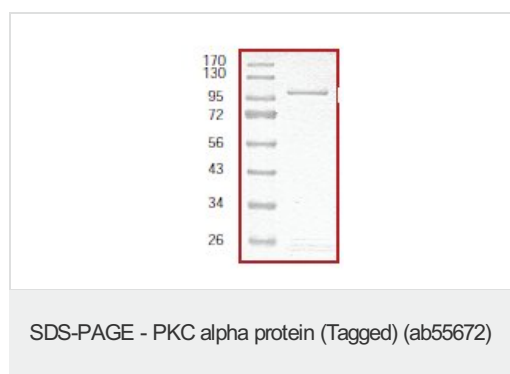
### Sequence similarities

Belongs to the protein kinase superfamily. AGC Ser/Thr protein kinase family. PKC subfamily. Contains 1 AGC-kinase C-terminal domain. Contains 1 C2 domain. Contains 2 phorbol-ester/DAG-type zinc fingers. Contains 1 protein kinase domain.

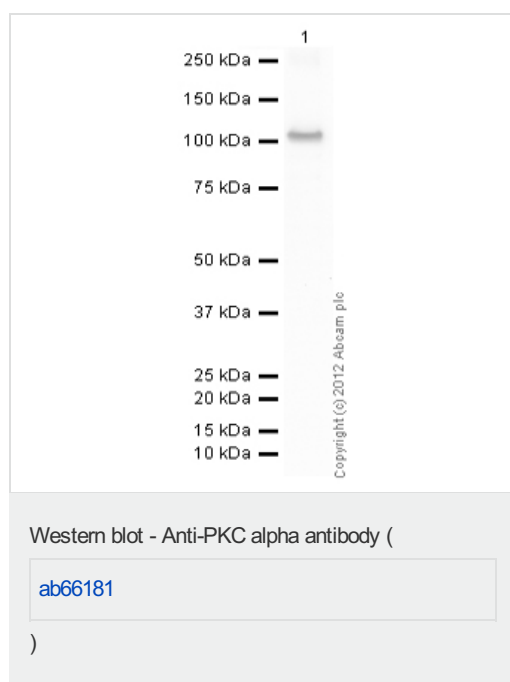
### Cellular localization

Cytoplasm. Cell membrane. Nucleus.

## Images



SDS Page analysis of ab55672



Anti-PKC alpha antibody ([ab66181](#)) at 1 µg/ml  
+ Recombinant human PKC alpha protein  
(ab55672) at 0.01 µg

### Secondary

Goat Anti-Rabbit IgG H&L (HRP) preadsorbed  
([ab97080](#)) at 1/5000 dilution

Developed using the ECL technique.

Performed under reducing conditions.

**Exposure time:** 10 seconds

## **Our Abpromise to you: Quality guaranteed and expert technical support**

---

- Replacement or refund for products not performing as stated on the datasheet
- Valid for 12 months from date of delivery
- Response to your inquiry within 24 hours
  
- We provide support in Chinese, English, French, German, Japanese and Spanish
- Extensive multi-media technical resources to help you
- We investigate all quality concerns to ensure our products perform to the highest standards

If the product does not perform as described on this datasheet, we will offer a refund or replacement. For full details of the Abpromise, please visit <http://www.abcam.com/abpromise> or contact our technical team.

## **Terms and conditions**

---

- Guarantee only valid for products bought direct from Abcam or one of our authorized distributors