

Product datasheet

Recombinant human Rab2 protein ab90797

1 Image

Overview

---

**Product name** Recombinant human Rab2 protein

**Protein length** Full length protein

Description

---

**Nature** Recombinant

**Source** Escherichia coli

Amino Acid Sequence

**Species** Human

Specifications

---

Our [Abpromise guarantee](#) covers the use of **ab90797** in the following tested applications.

The application notes include recommended starting dilutions; optimal dilutions/concentrations should be determined by the end user.

**Biological activity** Activity: GTPgammaS binding: >750 mmol/mol.

**Applications** Functional Studies

SDS-PAGE

Western blot

**Purity** > 90 % SDS-PAGE.

**Form** Liquid

Preparation and Storage

---

**Stability and Storage** Shipped on dry ice. Upon delivery aliquot and store at -80°C. Avoid freeze / thaw cycles.

Preservative: None

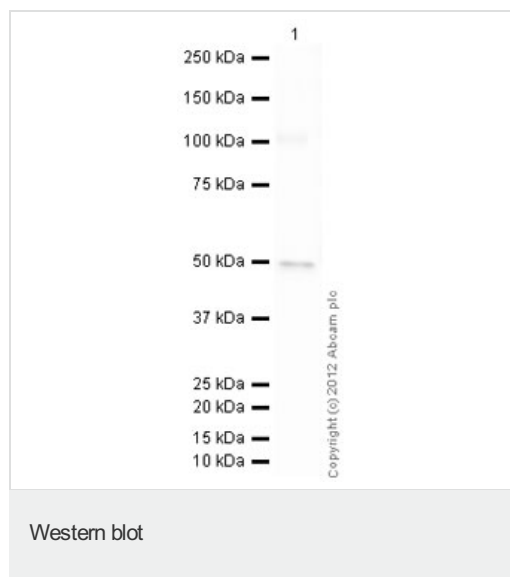
Constituents: 5mM DTT, 40mM Sodium chloride, 25mM HEPES, 2mM Magnesium chloride, 10mM GDP, pH 7.2

This product is an active protein and may elicit a biological response in vivo, handle with caution.

## General Info

<b>Function</b>	Required for protein transport from the endoplasmic reticulum to the Golgi complex.
<b>Sequence similarities</b>	Belongs to the small GTPase superfamily. Rab family.
<b>Cellular localization</b>	Endoplasmic reticulum-Golgi intermediate compartment membrane. Melanosome. Endoplasmic reticulum membrane. Golgi apparatus membrane. Identified by mass spectrometry in melanosome fractions from stage I to stage IV.

## Images



Anti-Rab2 antibody ([ab96509](#)) at 1/500 dilution + Recombinant human Rab2 protein ([ab90797](#)) at 0.01 µg

### Secondary

Goat Anti-Rabbit IgG H&L (HRP) preadsorbed ([ab97080](#)) at 1/5000 dilution

Developed using the ECL technique

Performed under reducing conditions.

**Exposure time** : 20 seconds

**Please note:** All products are "FOR RESEARCH USE ONLY AND ARE NOT INTENDED FOR DIAGNOSTIC OR THERAPEUTIC USE"

## Our Abpromise to you: Quality guaranteed and expert technical support

- Replacement or refund for products not performing as stated on the datasheet
- Valid for 12 months from date of delivery
- Response to your inquiry within 24 hours
- We provide support in Chinese, English, French, German, Japanese and Spanish
- Extensive multi-media technical resources to help you
- We investigate all quality concerns to ensure our products perform to the highest standards

If the product does not perform as described on this datasheet, we will offer a refund or replacement. For full details of the Abpromise, please visit <http://www.abcam.com/abpromise> or contact our technical team.

## Terms and conditions

- Guarantee only valid for products bought direct from Abcam or one of our authorized distributors