

Product datasheet

Anti-Ribonuclease T2 antibody ab107313

1 References 3 Images

Overview

Product name	Anti-Ribonuclease T2 antibody
Description	Rabbit polyclonal to Ribonuclease T2
Host species	Rabbit
Tested applications	Suitable for: ICC/IF, WB, IHC-P
Species reactivity	Reacts with: Human
Immunogen	KLH conjugated synthetic peptide between amino acids 13-40 from the N terminal region of Human Ribonuclease T2 (NP_003721.2).
Positive control	NCI-H460 cell line lysates; Human spleen carcinoma This antibody gave a positive result when used in the following formaldehyde fixed cell lines: LoVo

Properties

Form	Liquid
Storage instructions	Shipped at 4°C. Store at 4°C (up to 6 months). Store at -20°C long term.
Storage buffer	Preservative: 0.09% Sodium Azide Constituents: PBS
Purity	Immunogen affinity purified
Purification notes	ab107313 is purified through a protein A column, followed by peptide affinity purification.
Clonality	Polyclonal
Isotype	IgG

Applications

Our [Abpromise guarantee](#) covers the use of **ab107313** in the following tested applications.

The application notes include recommended starting dilutions; optimal dilutions/concentrations should be determined by the end user.

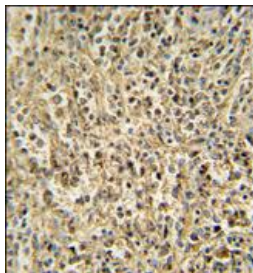
Application	Abreviews	Notes
ICC/IF		Use a concentration of 5 µg/ml.
WB		1/100 - 1/1000. Predicted molecular weight: 29 kDa.

Application	Abreviews	Notes
IHC-P		1/50 - 1/100. Perform heat mediated antigen retrieval with citrate buffer pH 6 before commencing with IHC staining protocol.

Target

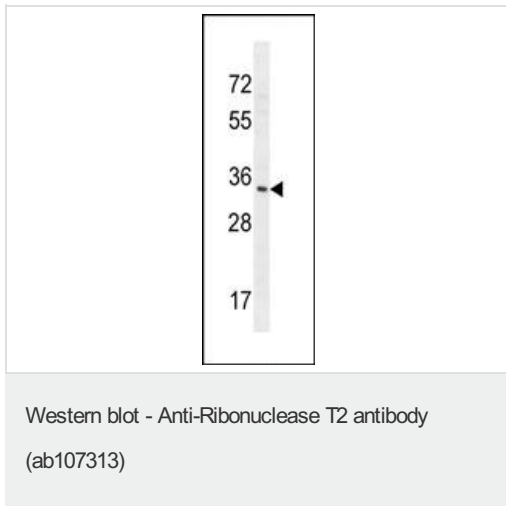
Tissue specificity	Ubiquitous. Higher expression levels observed in the temporal lobe and fetal brain.
Involvement in disease	Defects in RNASET2 are the cause of leukoencephalopathy cystic without megalencephaly (LCWM) [MIM:612951]. An infantile-onset syndrome of cerebral leukoencephalopathy. Affected newborns develop microcephaly and neurologic abnormalities including psychomotor impairment, seizures and sensorineural hearing impairment. The brain shows multifocal white matter lesions, anterior temporal lobe subcortical cysts, pericyclic abnormal myelination, ventriculomegaly and intracranial calcifications.
Sequence similarities	Belongs to the RNase T2 family.
Cellular localization	Secreted. Subcellular fractionation of transfected ovarian cancer cells reveals full-length RNASET2 in the endoplasmic reticulum fraction and the 2 smaller RNASET2 proteolytic products in the lysosome fraction.

Images



Immunohistochemistry (Formalin/PFA-fixed paraffin-embedded sections) - Anti-Ribonuclease T2 antibody (ab107313)

Immunohistochemistry (Formalin/PFA-fixed paraffin-embedded sections) analysis of human spleen carcinoma tissue sections labeling Ribonuclease T2 with ab107313 at 1/25 dilution. Tissue was fixed with formaldehyde and blocked with 3% BSA for 0.5 hour at 37°C. Heat mediated antigen retrieval was performed using a citrate buffer (pH6). Samples were incubated with primary antibody (1/25) for 1 hour at 37°C. A Peroxidase-conjugated Goat anti-rabbit polyclonal (ready to use) was used as the secondary antibody.



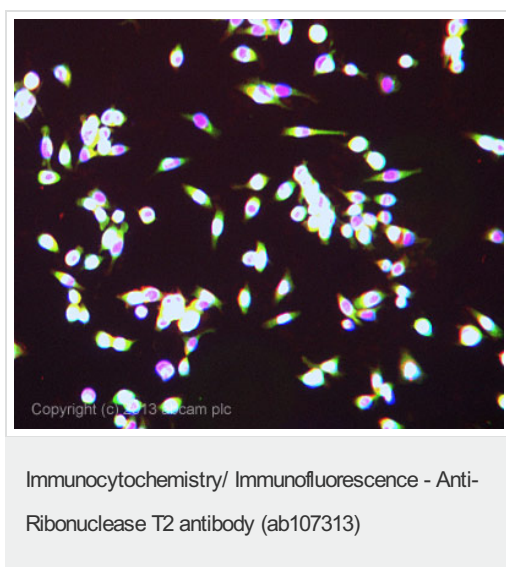
Anti-Ribonuclease T2 antibody (ab107313) at 1/1000 dilution + NCI-H460 whole cell lysate at 35 µg

Secondary

Goat Anti-Rabbit IgG, (H+L), Peroxidase conjugated at 1/10000 dilution

Predicted band size: 29 kDa

Blocking/Dilution buffer: 5% NFDm/TBST.



ab107313 stained LoVo cells. The cells were 4% formaldehyde fixed (10 min) and then incubated in 1%BSA / 10% normal goat serum / 0.3M glycine in 0.1% PBS-Tween for 1h to permeabilise the cells and block non-specific protein-protein interactions. The cells were then incubated with the antibody ab107313 at 5µg/ml overnight at +4°C. The secondary antibody (green) was DyLight® 488 goat anti- rabbit (ab96899) IgG (H+L) used at a 1/250 dilution for 1h. Alexa Fluor® 594 WGA was used to label plasma membranes (red) at a 1/200 dilution for 1h. DAPI was used to stain the cell nuclei (blue) at a concentration of 1.43µM.

Please note: All products are "FOR RESEARCH USE ONLY AND ARE NOT INTENDED FOR DIAGNOSTIC OR THERAPEUTIC USE"

Our Abpromise to you: Quality guaranteed and expert technical support

- Replacement or refund for products not performing as stated on the datasheet
- Valid for 12 months from date of delivery
- Response to your inquiry within 24 hours
- We provide support in Chinese, English, French, German, Japanese and Spanish
- Extensive multi-media technical resources to help you
- We investigate all quality concerns to ensure our products perform to the highest standards

If the product does not perform as described on this datasheet, we will offer a refund or replacement. For full details of the Abpromise,

please visit <http://www.abcam.com/abpromise> or contact our technical team.

Terms and conditions

- Guarantee only valid for products bought direct from Abcam or one of our authorized distributors