

Product datasheet

Anti-Ribosomal protein S11 antibody ab103245

1 Image

Overview

Product name	Anti-Ribosomal protein S11 antibody
Description	Rabbit polyclonal to Ribosomal protein S11
Tested applications	Suitable for: WB
Species reactivity	Reacts with: Human
Immunogen	Synthetic peptide conjugated to KLH, corresponding to a region within internal sequence amino acids 87-116 of Human Ribosomal protein S11.
Positive control	A2058 cell lysate

Properties

Form	Liquid
Storage instructions	Shipped at 4°C. Store at 4°C (up to 6 months). Store at -20°C long term.
Storage buffer	Preservative: 0.09% Sodium Azide Constituents: PBS
Purity	Immunogen affinity purified
Purification notes	ab103245 is purified through a protein A column, followed by peptide affinity purification.
Clonality	Polyclonal
Isotype	IgG

Applications

Our [Abpromise guarantee](#) covers the use of **ab103245** in the following tested applications.

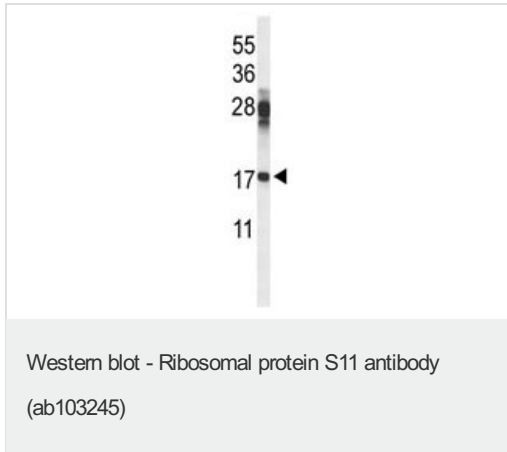
The application notes include recommended starting dilutions; optimal dilutions/concentrations should be determined by the end user.

Application	Abreviews	Notes
WB		1/100 - 1/500. Predicted molecular weight: 18 kDa.

Target

Sequence similarities	Belongs to the ribosomal protein S17P family.
------------------------------	---

Anti-Ribosomal protein S11 antibody images



Anti-Ribosomal protein S11 antibody
(ab103245) at 1/100 dilution + A2058 cell
lysate at 35 µg

Predicted band size : 18 kDa

Please note: All products are "FOR RESEARCH USE ONLY AND ARE NOT INTENDED FOR DIAGNOSTIC OR THERAPEUTIC USE"

Our Abpromise to you: Quality guaranteed and expert technical support

- Replacement or refund for products not performing as stated on the datasheet
- Valid for 12 months from date of delivery
- Response to your inquiry within 24 hours
- We provide support in Chinese, English, French, German, Japanese and Spanish
- Extensive multi-media technical resources to help you
- We investigate all quality concerns to ensure our products perform to the highest standards

If the product does not perform as described on this datasheet, we will offer a refund or replacement. For full details of the Abpromise, please visit <http://www.abcam.com/abpromise> or contact our technical team.

Terms and conditions

- Guarantee only valid for products bought direct from Abcam or one of our authorized distributors