

## Product datasheet

# Anti-Rsk 2 / MAPKAP Kinase 1b antibody [Y83] ab32133

**KO VALIDATED** Recombinant RabMAB<sup>®</sup>

[2 References](#) [3 Images](#)

### Overview

<b>Product name</b>	Anti-Rsk 2 / MAPKAP Kinase 1b antibody [Y83]
<b>Description</b>	Rabbit monoclonal [Y83] to Rsk 2 / MAPKAP Kinase 1b
<b>Host species</b>	Rabbit
<b>Specificity</b>	The antibody recognises Rsk2. It does not cross react with other S6 kinase family members.
<b>Tested applications</b>	<b>Suitable for:</b> WB, IHC-P, Flow Cyt, IP, ChIP <b>Unsuitable for:</b> ICC
<b>Species reactivity</b>	<b>Reacts with:</b> Mouse, Rat, Human
<b>Immunogen</b>	A synthetic peptide corresponding to residues near N-terminus of human RSK2
<b>Positive control</b>	Hela cell lysate and human lymphoma
<b>General notes</b>	

Our RabMAB<sup>®</sup> technology is a patented hybridoma-based technology for making rabbit monoclonal antibodies. For details on our patents, please refer to [RabMab<sup>®</sup> patents](#)

This product is a recombinant rabbit monoclonal antibody.

### Properties

<b>Form</b>	Liquid
<b>Storage instructions</b>	Shipped at 4°C. Upon delivery aliquot and store at -20°C. Avoid freeze / thaw cycles.
<b>Storage buffer</b>	PBS 49%, Sodium azide 0.01%, Glycerol 50%, BSA 0.05%
<b>Purity</b>	IgG fraction
<b>Clonality</b>	Monoclonal
<b>Clone number</b>	Y83
<b>Isotype</b>	IgG

### Applications

Our [Abpromise guarantee](#) covers the use of **ab32133** in the following tested applications.

The application notes include recommended starting dilutions; optimal dilutions/concentrations should be determined by the end user.

Application	Abreviews	Notes
WB		1/5000. Detects a band of approximately 90 kDa (predicted molecular weight: 84 kDa).
IHC-P		Use at an assay dependent concentration.
Flow Cyt		1/50. <a href="#">ab172730</a> - Rabbit monoclonal IgG, is suitable for use as an isotype control with this antibody.
IP		1/100.
ChIP		Use at an assay dependent concentration. PubMed: 25368387

**Application notes** Is unsuitable for ICC.

## Target

**Function** Serine/threonine kinase that may play a role in mediating the growth-factor and stress induced activation of the transcription factor CREB.

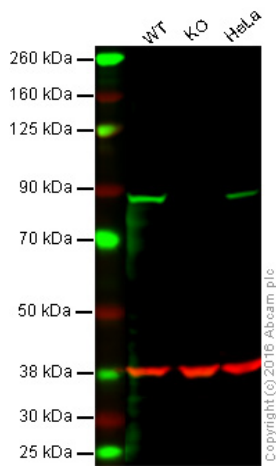
**Tissue specificity** Expressed in many tissues, highest levels in skeletal muscle.

**Involvement in disease** Defects in RPS6KA3 are the cause of Coffin-Lowry syndrome (CLS) [MIM:303600]; an X-linked dominant disorder characterized by severe mental retardation with facial and digital dysmorphisms, and progressive skeletal deformations.

**Sequence similarities** Belongs to the protein kinase superfamily. AGC Ser/Thr protein kinase family. S6 kinase subfamily.  
Contains 1 AGC-kinase C-terminal domain.  
Contains 2 protein kinase domains.

**Post-translational modifications** Autophosphorylated on Ser-386, as part of the activation process.  
Ser-227 phosphorylation promotes Ser-386 phosphorylation and leads to basal activation. Full activation by growth factors requires additional phosphorylation on Ser-369.

## Images



Western blot - Anti-Rsk 2 / MAPKAP Kinase 1b antibody [Y83] (ab32133)

**Lane 1:** Wild-type HAP1 cell lysate (40 µg)

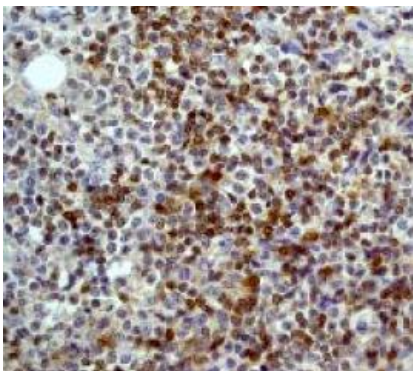
**Lane 2:** Rsk 2 / MAPKAP Kinase 1b knockout HAP1 cell lysate (40 µg)

**Lane 3:** HeLa cell lysate (40 µg)

**Lane 4:** (40 µg)

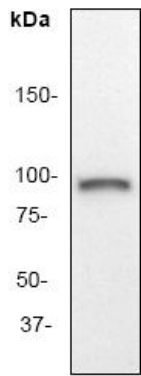
**Lanes 1 - 4:** Merged signal (red and green). Green - ab32133 observed at 88 kDa. Red - loading control, [ab8245](#), observed at 37 kDa.

ab32133 was shown to specifically react with Rsk 2 / MAPKAP Kinase 1b when Rsk 2 / MAPKAP Kinase 1b knockout samples were used. Wild-type and Rsk 2 / MAPKAP Kinase 1b knockout samples were subjected to SDS-PAGE. Ab32133 and [ab8245](#) (loading control to GAPDH) were diluted at 1/5000 and 1:10,000 dilution respectively and incubated overnight at 4C. Blots were developed with Goat anti-Rabbit IgG H&L (IRDye® 800CW) preadsorbed [ab216773](#) and Goat anti-Mouse IgG H&L (IRDye® 680RD) preadsorbed [ab216776](#) secondary antibodies at 1:10,000 dilution for 1 hour at room temperature before imaging.



Immunohistochemistry (Formalin/PFA-fixed paraffin-embedded sections) - Anti-Rsk 2 / MAPKAP Kinase 1b antibody [Y83] (ab32133)

ab32133, staining human lymphoma by immunohistochemistry, Paraffin embedded tissue



Anti-Rsk 2 / MAPKAP Kinase 1b antibody  
[Y83] (ab32133) at 1/5000 dilution + HeLa cell  
lysate

**Predicted band size:** 84 kDa

**Observed band size:** 90 kDa

Western blot - Rsk 2 / MAPKAP Kinase 1b antibody  
[Y83] (ab32133)

**Please note:** All products are "FOR RESEARCH USE ONLY AND ARE NOT INTENDED FOR DIAGNOSTIC OR THERAPEUTIC USE"

### Our Abpromise to you: Quality guaranteed and expert technical support

- Replacement or refund for products not performing as stated on the datasheet
- Valid for 12 months from date of delivery
- Response to your inquiry within 24 hours
- We provide support in Chinese, English, French, German, Japanese and Spanish
- Extensive multi-media technical resources to help you
- We investigate all quality concerns to ensure our products perform to the highest standards

If the product does not perform as described on this datasheet, we will offer a refund or replacement. For full details of the Abpromise, please visit <http://www.abcam.com/abpromise> or contact our technical team.

### Terms and conditions

- Guarantee only valid for products bought direct from Abcam or one of our authorized distributors