

Product datasheet

Anti-SBEM antibody ab122530

[1 References](#) [1 Image](#)

Overview

Product name	Anti-SBEM antibody
Description	Rabbit polyclonal to SBEM
Host species	Rabbit
Tested applications	Suitable for: IHC-P
Species reactivity	Reacts with: Human
Immunogen	antigen sequence AQNPTTAAPA DTYPATGPAD DEAPDAETTA AATTA, corresponding to amino acids 19-53 of Human SBEM (UniProt ID: Q96DR8). Run BLAST with ExPASy Run BLAST with NCBI
Positive control	Human breast tissue

Properties

Form	Liquid
Storage instructions	Shipped at 4°C. Upon delivery aliquot and store at -20°C. Avoid freeze / thaw cycles.
Storage buffer	pH: 7.20 Preservative: 0.02% Sodium azide Constituents: 59% PBS, 40% Glycerol
Purity	Immunogen affinity purified
Clonality	Polyclonal
Isotype	IgG

Applications

Our [Abpromise guarantee](#) covers the use of **ab122530** in the following tested applications.

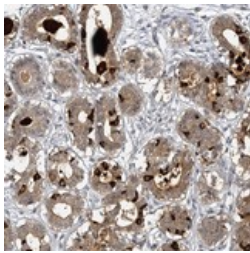
The application notes include recommended starting dilutions; optimal dilutions/concentrations should be determined by the end user.

Application	Abreviews	Notes
IHC-P		1/20 - 1/50. Perform heat mediated antigen retrieval with citrate buffer pH 6 before commencing with IHC staining protocol.

Target

Function	May play a role as marker for the diagnosis of metastatic breast cancer.
Tissue specificity	Expressed in mammary, salivary glands and prostate. Also detected in lung. Mainly expressed in cancer cell lines of breast origin. Highly expressed in lymph node-positive compared with node-negative tumors. Detected in all lymph node containing metastatic cells.
Post-translational modifications	O-glycosylated.
Cellular localization	Secreted. Membrane.

Images



Immunohistochemical staining of SBEM in paraffin embedded Human breast tissue by Immunohistochemistry, using ab122530 at a 1/20 dilution. The image shows moderate cytoplasmic and extracellular positivity in glandular cells.

Immunohistochemistry (Formalin/PFA-fixed paraffin-embedded sections) - Anti-SBEM antibody (ab122530)

Please note: All products are "FOR RESEARCH USE ONLY AND ARE NOT INTENDED FOR DIAGNOSTIC OR THERAPEUTIC USE"

Our Abpromise to you: Quality guaranteed and expert technical support

- Replacement or refund for products not performing as stated on the datasheet
- Valid for 12 months from date of delivery
- Response to your inquiry within 24 hours
- We provide support in Chinese, English, French, German, Japanese and Spanish
- Extensive multi-media technical resources to help you
- We investigate all quality concerns to ensure our products perform to the highest standards

If the product does not perform as described on this datasheet, we will offer a refund or replacement. For full details of the Abpromise, please visit <http://www.abcam.com/abpromise> or contact our technical team.

Terms and conditions

- Guarantee only valid for products bought direct from Abcam or one of our authorized distributors