

Product datasheet

Anti-SH3BGRL antibody ab80865

2 Images

Overview

Product name	Anti-SH3BGRL antibody
Description	Rabbit polyclonal to SH3BGRL
Host species	Rabbit
Tested applications	Suitable for: IHC-P, WB, ELISA
Species reactivity	Reacts with: Human Predicted to work with: Mouse, Rat, Rabbit, Horse, Chicken, Cow, Cat, Dog, Pig, Zebrafish
Immunogen	A synthetic peptide corresponding to a region within amino acids 66-115 of Human SH3BGRL (LPPQIFNESQ YRGDYDAFFE ARENNAVYAF LGLTAPPGSK EAEVQAKQQA) Run BLAST with ExPASy Run BLAST with NCBI
Positive control	MCF7 cell lysate

Properties

Form	Liquid
Storage instructions	Shipped at 4°C. Upon delivery aliquot and store at -20°C. Avoid repeated freeze / thaw cycles.
Storage buffer	Preservative: None Constituents: 2% Sucrose, PBS
Purity	Immunogen affinity purified
Clonality	Polyclonal
Isotype	IgG

Applications

Our [Abpromise guarantee](#) covers the use of **ab80865** in the following tested applications.

The application notes include recommended starting dilutions; optimal dilutions/concentrations should be determined by the end user.

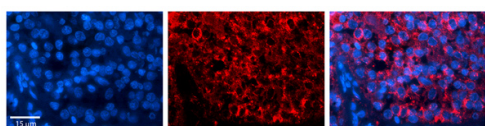
Application	Abreviews	Notes
IHC-P		1/100.

Application	Abreviews	Notes
WB		Use a concentration of 1 µg/ml. Predicted molecular weight: 13 kDa. Good results were obtained when blocked with 5% non-fat dry milk in 0.05% PBS-T.
ELISA		Use at an assay dependent concentration. ELISA titre using peptide based assay: 1/62500.

Target

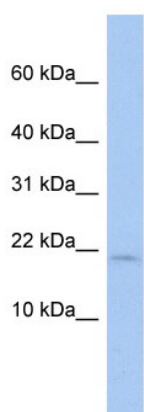
Tissue specificity	Ubiquitous.
Sequence similarities	Belongs to the SH3BGR family.

Images



Immunohistochemistry (Formalin/PFA-fixed paraffin-embedded sections) - Anti-SH3BGRL antibody (ab80865)

Immunohistochemistry (Formalin/PFA-fixed paraffin-embedded sections) analysis of human pineal tissue labelling SH3BGRL with ab80865 at 1/100. A Cy3-conjugated donkey anti-rabbit IgG (1/200) was used as the secondary antibody. Positive staining shown in the cytoplasm of cell bodies of pinealocytes. Magnification: 20X. Exposure time: 0.5 - 2.0 seconds. Left - DAPI. Middle - SH3BGRL. Right - Merge.



Western blot - Anti-SH3BGRL antibody (ab80865)

Anti-SH3BGRL antibody (ab80865) at 1 µg/ml + MCF7 cell lysate at 10 µg

Secondary

HRP conjugated anti-Rabbit IgG diluted in 1/50000 - 1/100000.

Developed using the ECL technique.

Predicted band size: 13 kDa

Please note: All products are "FOR RESEARCH USE ONLY AND ARE NOT INTENDED FOR DIAGNOSTIC OR THERAPEUTIC USE"

Our Abpromise to you: Quality guaranteed and expert technical support

- Replacement or refund for products not performing as stated on the datasheet
- Valid for 12 months from date of delivery
- Response to your inquiry within 24 hours

- We provide support in Chinese, English, French, German, Japanese and Spanish
- Extensive multi-media technical resources to help you
- We investigate all quality concerns to ensure our products perform to the highest standards

If the product does not perform as described on this datasheet, we will offer a refund or replacement. For full details of the Abpromise, please visit <http://www.abcam.com/abpromise> or contact our technical team.

Terms and conditions

- Guarantee only valid for products bought direct from Abcam or one of our authorized distributors