

Product datasheet

Anti-SKA2 antibody ab113067

1 Image

Overview

Product name	Anti-SKA2 antibody
Description	Rabbit polyclonal to SKA2
Tested applications	Suitable for: WB
Species reactivity	Reacts with: Human
Immunogen	KLH conjugated synthetic peptide corresponding to a region within N terminal amino acids 16-45 of Human SKA2 (NP_872426.1).
Positive control	T47D cell line lysate

Properties

Form	Liquid
Storage instructions	Shipped at 4°C. Store at 4°C (up to 6 months). Store at -20°C long term.
Storage buffer	Preservative: 0.09% Sodium azide Constituent: 99% PBS
Purity	Immunogen affinity purified
Purification notes	ab113067 is purified through a protein A column, followed by peptide affinity purification.
Clonality	Polyclonal
Isotype	IgG

Applications

Our [Abpromise guarantee](#) covers the use of **ab113067** in the following tested applications.

The application notes include recommended starting dilutions; optimal dilutions/concentrations should be determined by the end user.

Application	Abreviews	Notes
WB		1/100 - 1/500. Predicted molecular weight: 14 kDa.

Target

Function

Component of the SKA1 complex, a microtubule-binding subcomplex of the outer kinetochore that is essential for proper chromosome segregation. Required for timely anaphase onset during mitosis, when chromosomes undergo bipolar attachment on spindle microtubules leading to silencing of the spindle checkpoint. The SKA1 complex is a direct component of the kinetochore-microtubule interface and directly associates with microtubules as oligomeric assemblies. The complex facilitates the processive movement of microspheres along a microtubule in a depolymerization-coupled manner. In the complex, it is required for SKA1 localization.

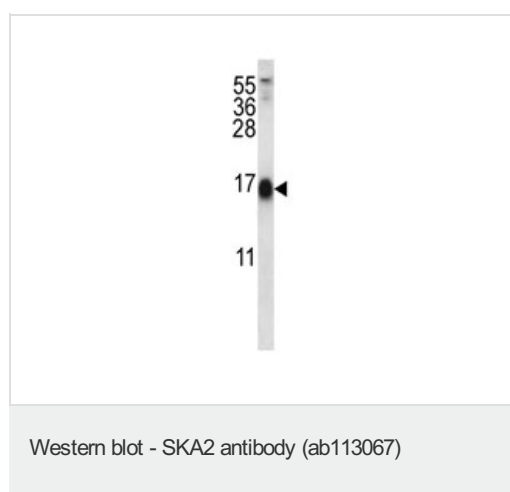
Sequence similarities

Belongs to the SKA2 family.

Cellular localization

Cytoplasm > cytoskeleton > spindle. Chromosome > centromere > kinetochore. Localizes to the outer kinetochore and spindle microtubules during mitosis in a NDC80 complex-dependent manner. Localizes to both the mitotic spindle and kinetochore-associated proteins.

Images



Anti-SKA2 antibody (ab113067) at 1/100 dilution + T47D cell line lysate at 35 µg

Predicted band size : 14 kDa

Please note: All products are "FOR RESEARCH USE ONLY AND ARE NOT INTENDED FOR DIAGNOSTIC OR THERAPEUTIC USE"

Our Abpromise to you: Quality guaranteed and expert technical support

- Replacement or refund for products not performing as stated on the datasheet
- Valid for 12 months from date of delivery
- Response to your inquiry within 24 hours
- We provide support in Chinese, English, French, German, Japanese and Spanish
- Extensive multi-media technical resources to help you
- We investigate all quality concerns to ensure our products perform to the highest standards

If the product does not perform as described on this datasheet, we will offer a refund or replacement. For full details of the Abpromise, please visit <http://www.abcam.com/abpromise> or contact our technical team.

Terms and conditions

- Guarantee only valid for products bought direct from Abcam or one of our authorized distributors