

Product datasheet

Anti-SLC15A1 antibody ab78020

1 References 1 Image

Overview

<b>Product name</b>	Anti-SLC15A1 antibody
<b>Description</b>	Rabbit polyclonal to SLC15A1
<b>Host species</b>	Rabbit
<b>Tested applications</b>	<b>Suitable for:</b> WB, ELISA, IHC-P
<b>Species reactivity</b>	<b>Reacts with:</b> Human
<b>Immunogen</b>	Synthetic peptide from the C terminal region of Human SLC15A1
<b>Positive control</b>	IHC-P: Human brain cerebellum tissue.

Properties

<b>Form</b>	Liquid
<b>Storage instructions</b>	Shipped at 4°C. Upon delivery aliquot and store at -20°C. Avoid repeated freeze / thaw cycles.
<b>Storage buffer</b>	Preservative: 0.01% Sodium Azide Constituents: 50% Glycerol, PBS
<b>Purity</b>	Immunogen affinity purified
<b>Clonality</b>	Polyclonal
<b>Isotype</b>	IgG

Applications

Our [Abpromise guarantee](#) covers the use of **ab78020** in the following tested applications.

The application notes include recommended starting dilutions; optimal dilutions/concentrations should be determined by the end user.

Application	Abreviews	Notes
WB		Use a concentration of 1 µg/ml. Predicted molecular weight: 79 kDa.
ELISA		Use a concentration of 1 µg/ml.
IHC-P		Use a concentration of 10 µg/ml.

## Target

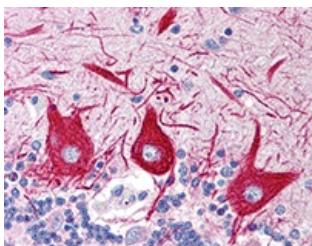
---

<b>Function</b>	Proton-coupled intake of oligopeptides of 2 to 4 amino acids with a preference for dipeptides. May constitute a major route for the absorption of protein digestion end-products.
<b>Sequence similarities</b>	Belongs to the PTR2/POT transporter (TC 2.A.17) family.
<b>Cellular localization</b>	Membrane.

---

## Images

---



Immunohistochemistry analysis of formalin-fixed, paraffin-embedded Human brain cerebellum tissue using 10µg/ml [ab78017](#).

Immunohistochemistry (Formalin/PFA-fixed paraffin-embedded sections) - SLC15A1 antibody (ab78020)

**Please note:** All products are "FOR RESEARCH USE ONLY AND ARE NOT INTENDED FOR DIAGNOSTIC OR THERAPEUTIC USE"

## Our Abpromise to you: Quality guaranteed and expert technical support

---

- Replacement or refund for products not performing as stated on the datasheet
- Valid for 12 months from date of delivery
- Response to your inquiry within 24 hours
- We provide support in Chinese, English, French, German, Japanese and Spanish
- Extensive multi-media technical resources to help you
- We investigate all quality concerns to ensure our products perform to the highest standards

If the product does not perform as described on this datasheet, we will offer a refund or replacement. For full details of the Abpromise, please visit <http://www.abcam.com/abpromise> or contact our technical team.

## Terms and conditions

---

- Guarantee only valid for products bought direct from Abcam or one of our authorized distributors