

Product datasheet

Anti-SLC1A4 antibody ab118454

2 Images

Overview

<b>Product name</b>	Anti-SLC1A4 antibody
<b>Description</b>	Rabbit polyclonal to SLC1A4
<b>Host species</b>	Rabbit
<b>Tested applications</b>	<b>Suitable for:</b> IHC-P
<b>Species reactivity</b>	<b>Reacts with:</b> Human
<b>Immunogen</b>	Synthetic peptide conjugated to KLH, corresponding to a region within the internal domain of Human SLC1A4 (NP_003029.2).
<b>Positive control</b>	Human Colon and Brain (basal Ganglia) tissues.

Properties

<b>Form</b>	Liquid
<b>Storage instructions</b>	Shipped at 4°C. Upon delivery aliquot and store at -20°C. Avoid freeze / thaw cycles.
<b>Storage buffer</b>	Preservative: 0.1% Sodium azide Constituent: 99% PBS
<b>Purity</b>	Protein A purified
<b>Clonality</b>	Polyclonal
<b>Isotype</b>	IgG

Applications

Our [Abpromise guarantee](#) covers the use of **ab118454** in the following tested applications.

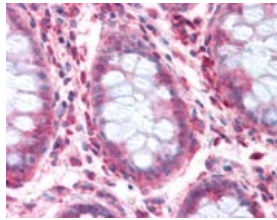
The application notes include recommended starting dilutions; optimal dilutions/concentrations should be determined by the end user.

Application	Abreviews	Notes
IHC-P		Use a concentration of 15 - 20 µg/ml.

Target

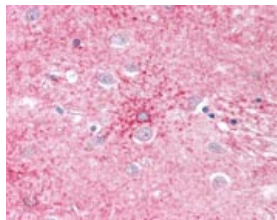
<b>Function</b>	Transporter for alanine, serine, cysteine, and threonine. Exhibits sodium dependence.
<b>Tissue specificity</b>	Expressed mostly in brain, muscle, and pancreas but detected in all tissues examined.
<b>Involvement in disease</b>	Spastic tetraplegia, thin corpus callosum, and progressive microcephaly
<b>Sequence similarities</b>	Belongs to the dicarboxylate/amino acid:cation symporter (DAACS) (TC 2.A.23) family. SLC1A4 subfamily.
<b>Cellular localization</b>	Membrane. Melanosome. Identified by mass spectrometry in melanosome fractions from stage I to stage IV.

## Images



ab118454, at 20 µg/ml, staining SLC1A4 in Formalin-fixed, Paraffin-embedded Human Colon tissue by Immunohistochemistry.

Immunohistochemistry (Formalin/PFA-fixed paraffin-embedded sections) - Anti-SLC1A4 antibody (ab118454)



ab118454, at 20 µg/ml, staining SLC1A4 in Formalin-fixed, Paraffin-embedded Human Brain (basal Ganglia) tissue by Immunohistochemistry.

Immunohistochemistry (Formalin/PFA-fixed paraffin-embedded sections) - Anti-SLC1A4 antibody (ab118454)

**Please note:** All products are "FOR RESEARCH USE ONLY AND ARE NOT INTENDED FOR DIAGNOSTIC OR THERAPEUTIC USE"

## Our Abpromise to you: Quality guaranteed and expert technical support

- Replacement or refund for products not performing as stated on the datasheet
- Valid for 12 months from date of delivery
- Response to your inquiry within 24 hours
- We provide support in Chinese, English, French, German, Japanese and Spanish
- Extensive multi-media technical resources to help you
- We investigate all quality concerns to ensure our products perform to the highest standards

If the product does not perform as described on this datasheet, we will offer a refund or replacement. For full details of the Abpromise,

please visit <http://www.abcam.com/abpromise> or contact our technical team.

## Terms and conditions

---

- Guarantee only valid for products bought direct from Abcam or one of our authorized distributors