

Product datasheet

Anti-SLC1A5 antibody ab84903

★★★★☆ 1 Abreviews 1 References 3 Images

Overview

| | |
|----------------------------|--|
| Product name | Anti-SLC1A5 antibody |
| Description | Rabbit polyclonal to SLC1A5 |
| Host species | Rabbit |
| Tested applications | Suitable for: IHC-P, ICC/IF, WB |
| Species reactivity | Reacts with: Human Predicted to work with: Mouse, Rat, Sheep, Cow, Monkey |
| Immunogen | Synthetic peptide conjugated to KLH derived from within residues 200 - 300 of Human SLC1A5. Read Abcam's proprietary immunogen policy (Peptide available as ab97988 .) |
| Positive control | This antibody gave a positive signal in Jurkat whole cell lysate. |
| General notes | immunogen sequence is aa244-265 (ALRKLGPPEGELLIRFFNSFNEA) |

Properties

| | |
|-----------------------------|--|
| Form | Liquid |
| Storage instructions | Shipped at 4°C. Store at +4°C short term (1-2 weeks). Upon delivery aliquot. Store at -20°C or -80°C. Avoid freeze / thaw cycle. |
| Storage buffer | Preservative: 0.02% Sodium Azide Constituents: 1% BSA, PBS, pH 7.4 |
| Purity | Immunogen affinity purified |
| Clonality | Polyclonal |
| Isotype | IgG |

Applications

Our [Abpromise guarantee](#) covers the use of **ab84903** in the following tested applications.

The application notes include recommended starting dilutions; optimal dilutions/concentrations should be determined by the end user.

| Application | Abreviews | Notes |
|-------------|-----------|-------|
|-------------|-----------|-------|

| Application | Abreviews | Notes |
|-------------|-----------|---|
| IHC-P | | Use a concentration of 5 µg/ml. Perform heat mediated antigen retrieval before commencing with IHC staining protocol. |
| ICC/IF | | Use a concentration of 5 µg/ml. |
| WB | ★★★★☆ | Use a concentration of 1 µg/ml. Detects a band of approximately 52 kDa (predicted molecular weight: 56 kDa). |

Target

Function

Sodium-dependent amino acids transporter that has a broad substrate specificity, with a preference for zwitterionic amino acids. It accepts as substrates all neutral amino acids, including glutamine, asparagine, and branched-chain and aromatic amino acids, and excludes methylated, anionic, and cationic amino acids. May also be activated by insulin. Through binding of the fusogenic protein syncytin-1/ERVW-1 may mediate trophoblasts syncytialization, the spontaneous fusion of their plasma membranes, an essential process in placental development (PubMed:10708449, PubMed:23492904). Acts as a cell surface receptor for feline endogenous virus RD114, baboon M7 endogenous virus and type D simian retroviruses (PubMed:10051606, PubMed:10196349).

Tissue specificity

Placenta, lung, skeletal muscle, kidney, pancreas, and intestine.

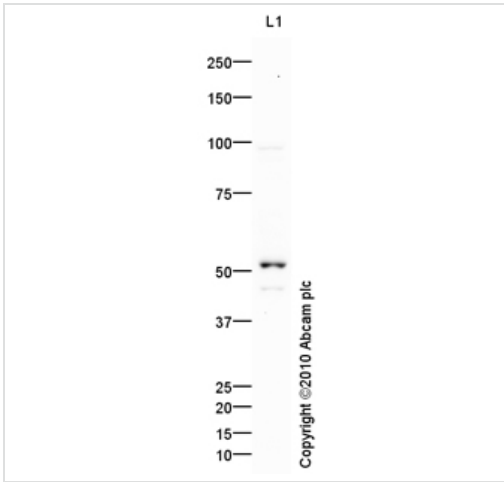
Sequence similarities

Belongs to the dicarboxylate/amino acid:cation symporter (DAACS) (TC 2.A.23) family. SLC1A5 subfamily.

Cellular localization

Cell membrane. Melanosome. Identified by mass spectrometry in melanosome fractions from stage I to stage IV.

Images



Western blot - Anti-SLC1A5 antibody (ab84903)

Anti-SLC1A5 antibody (ab84903) at 1 μ g/ml +
Jurkat (Human T cell lymphoblast-like cell line)
Whole Cell Lysate at 10 μ g

Secondary

Goat polyclonal to Rabbit IgG - H&L - Pre-
Adsorbed (HRP) at 1/3000 dilution

Developed using the ECL technique.

Performed under reducing conditions.

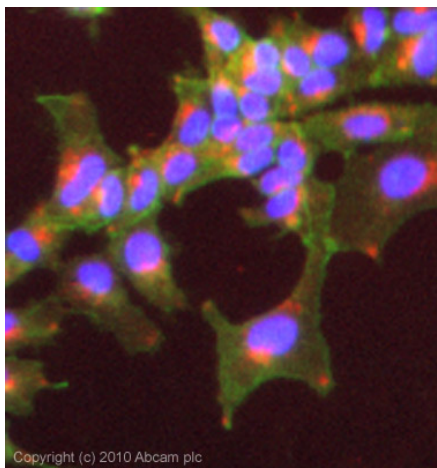
Predicted band size: 56 kDa

Observed band size: 52 kDa

Additional bands at: 45 kDa, 97 kDa. We
are unsure as to the identity of these extra
bands.

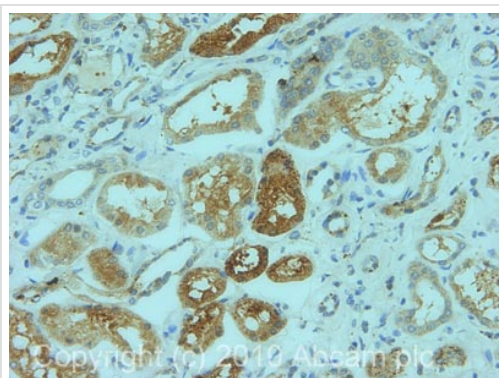
Exposure time: 20 minutes

The 52 kDa band observed is comparable to
the molecular weight seen with other
commercially available antibodies to Human
Neutral amino acid transporter B (SLC1A5).



Immunocytochemistry/ Immunofluorescence - Anti-SLC1A5 antibody (ab84903)

ICC/IF image of ab84903 stained Hek293 cells. The cells were 4% PFA fixed (10 min) and then incubated in 1%BSA / 10% normal goat serum / 0.3M glycine in 0.1% PBS-Tween for 1h to permeabilise the cells and block non-specific protein-protein interactions. The cells were then incubated with the antibody (ab84903, 5µg/ml) overnight at +4°C. The secondary antibody (green) was Alexa Fluor® 488 goat anti-rabbit IgG (H+L) used at a 1/1000 dilution for 1h. Alexa Fluor® 594 WGA was used to label plasma membranes (red) at a 1/200 dilution for 1h. DAPI was used to stain the cell nuclei (blue) at a concentration of 1.43µM. This antibody also gave a positive result in 4% PFA fixed (10 min) HepG2 and MCF7 cells at 5µg/ml, and in 100% methanol fixed (5 min) Hek293, HepG2 and MCF7 cells at 5µg/ml.



Immunohistochemistry (Formalin/PFA-fixed paraffin-embedded sections) - Anti-SLC1A5 antibody (ab84903)

IHC image of SLC1A5 staining in human normal kidney formalin fixed paraffin embedded tissue section, performed on a Leica Bond™ system using the standard protocol F. The section was pre-treated using heat mediated antigen retrieval with sodium citrate buffer (pH6, epitope retrieval solution 1) for 20 mins. The section was then incubated with ab84903, 5µg/ml, for 15 mins at room temperature and detected using an HRP conjugated compact polymer system. DAB was used as the chromogen. The section was then counterstained with haematoxylin and mounted with DPX.

Please note: All products are "FOR RESEARCH USE ONLY AND ARE NOT INTENDED FOR DIAGNOSTIC OR THERAPEUTIC USE"

Our Abpromise to you: Quality guaranteed and expert technical support

- Replacement or refund for products not performing as stated on the datasheet
- Valid for 12 months from date of delivery
- Response to your inquiry within 24 hours
- We provide support in Chinese, English, French, German, Japanese and Spanish

- Extensive multi-media technical resources to help you
- We investigate all quality concerns to ensure our products perform to the highest standards

If the product does not perform as described on this datasheet, we will offer a refund or replacement. For full details of the Abpromise, please visit <http://www.abcam.com/abpromise> or contact our technical team.

Terms and conditions

- Guarantee only valid for products bought direct from Abcam or one of our authorized distributors