


Product datasheet

Anti-SLC35F5 antibody ab69822

1 Image

Overview

|                            |   |
|----------------------------|---|
| <b>Product name</b>        | Anti-SLC35F5 antibody   |
| <b>Description</b>         | Rabbit polyclonal to SLC35F5  |
| <b>Tested applications</b> | <b>Suitable for:</b> WB, ELISA  |
| <b>Species reactivity</b>  | <b>Reacts with:</b> Human<br><b>Predicted to work with:</b> Mouse, Rat, Rabbit, Horse, Guinea pig, Cow, Cat, Dog   |
| <b>Immunogen</b>           | A region within synthetic peptide: MFFGFVGLFN LLLLWPGFFL LHYTGFEDFE FPNKVVLMCI IINGLIGTVL, corresponding to internal/c-terminal amino acids 361-410 of Human SLC35F5<br><a href="#">Run BLAST with ExPASy</a> <a href="#">Run BLAST with NCBI</a> |

Properties

|                             |   |
|-----------------------------|---|
| <b>Form</b>                 | Liquid  |
| <b>Storage instructions</b> | Shipped at 4°C. Upon delivery aliquot and store at -20°C or -80°C. Avoid repeated freeze / thaw cycles. |
| <b>Storage buffer</b>       | Preservative: None<br>Constituents: 2% Sucrose, PBS   |
| <b>Purity</b>               | Protein A purified  |
| <b>Clonality</b>            | Polyclonal  |
| <b>Isotype</b>              | IgG   |

Applications

Our [Abpromise guarantee](#) covers the use of **ab69822** in the following tested applications.

The application notes include recommended starting dilutions; optimal dilutions/concentrations should be determined by the end user.

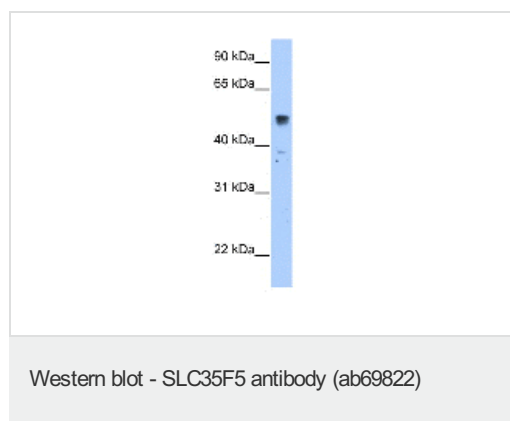
| Application | Abreviews | Notes   |
|-------------|-----------|---|
| WB          |           | Use a concentration of 2.5 µg/ml. Detects a band of approximately 52 kDa (predicted molecular weight: 59 kDa). Good results were obtained when blocked with 5% non-fat dry milk in 0.05% PBS-T. |

| Application | Abreviews | Notes   |
|-------------|-----------|---|
| ELISA       |           | Use at an assay dependent concentration.<br>ELISA titre using peptide based assay: 1:1562500. |

## Target

|                              |   |
|------------------------------|---|
| <b>Function</b>              | Putative solute transporter.  |
| <b>Tissue specificity</b>    | Expressed in colorectal cancer cells.                                       |
| <b>Sequence similarities</b> | Belongs to the SLC35F solute transporter family.<br>Contains 1 DUF6 domain. |
| <b>Cellular localization</b> | Membrane.   |

## Images



Anti-SLC35F5 antibody (ab69822) at 2.5 µg +  
transfected 293T cell lysate at 10 µg

### Secondary

HRP conjugated anti-Rabbit IgG at 1/50000  
dilution

**Predicted band size** : 59 kDa

**Observed band size** : 52 kDa

**Please note:** All products are "FOR RESEARCH USE ONLY AND ARE NOT INTENDED FOR DIAGNOSTIC OR THERAPEUTIC USE"

## Our Abpromise to you: Quality guaranteed and expert technical support

- Replacement or refund for products not performing as stated on the datasheet
- Valid for 12 months from date of delivery
- Response to your inquiry within 24 hours
- We provide support in Chinese, English, French, German, Japanese and Spanish
- Extensive multi-media technical resources to help you
- We investigate all quality concerns to ensure our products perform to the highest standards

If the product does not perform as described on this datasheet, we will offer a refund or replacement. For full details of the Abpromise, please visit <http://www.abcam.com/abpromise> or contact our technical team.

## Terms and conditions

- Guarantee only valid for products bought direct from Abcam or one of our authorized distributors