


Product datasheet

Anti-SLC40A1 antibody ab58695

[1 Abreviews](#) [5 References](#) [1 Image](#)

Overview

Product name	Anti-SLC40A1 antibody
Description	Rabbit polyclonal to SLC40A1
Host species	Rabbit
Tested applications	Suitable for: WB, ELISA
Species reactivity	Reacts with: Rat, Human Predicted to work with: Mouse 
Immunogen	Synthetic peptide corresponding to N-terminal residues of human SLC40A1 Run BLAST with ExPASy Run BLAST with NCBI
Positive control	liver

Properties

Form	Liquid
Storage instructions	Shipped at 4°C. Upon delivery aliquot and store at -20°C. Avoid freeze / thaw cycles.
Storage buffer	Preservative: 0.01% Sodium Azide Constituents: 50% Glycerol, PBS
Purity	Immunogen affinity purified
Clonality	Polyclonal
Isotype	IgG

Applications

Our [Abpromise guarantee](#) covers the use of **ab58695** in the following tested applications.

The application notes include recommended starting dilutions; optimal dilutions/concentrations should be determined by the end user.

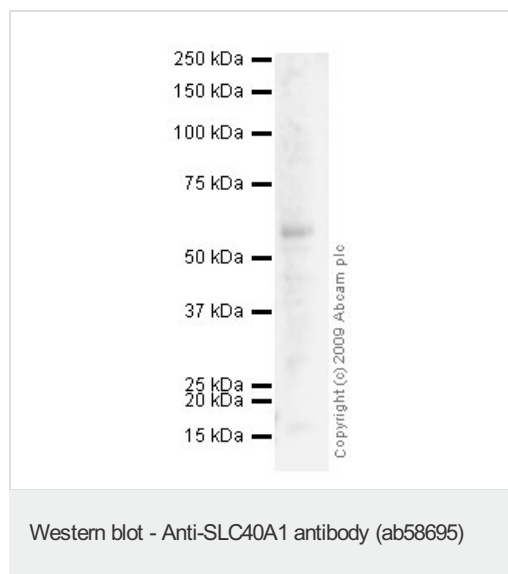
Application	Abreviews	Notes
WB		Use a concentration of 1 µg/ml. Detects a band of approximately 69 kDa (predicted molecular weight: 62-69 kDa). Incubate for 2hrs

Application	Abreviews	Notes
ELISA		Use at an assay dependent concentration.

Target

Function	May be involved in iron export from duodenal epithelial cell and also in transfer of iron between maternal and fetal circulation. Mediates iron efflux in the presence of a ferroxidase (hephaestin and/or ceruloplasmin).
Tissue specificity	Expressed in placenta, intestine, muscle and spleen.
Involvement in disease	Defects in SLC40A1 are the cause of hemochromatosis type 4 (HFE4) [MIM:606069]. HFE4 is an autosomal dominant iron-loading disorder characterized by early iron accumulation in reticuloendothelial cells and a marked increase in serum ferritin before elevation of the transferrin saturation.
Sequence similarities	Belongs to the SLC40A transporter family.
Cellular localization	Cell membrane. Localized to the basolateral membrane of polarized epithelial cells.

Images



Anti-SLC40A1 antibody (ab58695) at 1 µg/ml
+ Human colon tissue lysate - total protein
(ab30051) at 10 µg

Secondary

Goat polyclonal to Rabbit IgG - H&L - Pre-Adsorbed (HRP) at 1/3000 dilution

Predicted band size: 62-69 kDa

Observed band size: 62 kDa

Please note: All products are "FOR RESEARCH USE ONLY AND ARE NOT INTENDED FOR DIAGNOSTIC OR THERAPEUTIC USE"

Our Abpromise to you: Quality guaranteed and expert technical support

- Replacement or refund for products not performing as stated on the datasheet
- Valid for 12 months from date of delivery
- Response to your inquiry within 24 hours
- We provide support in Chinese, English, French, German, Japanese and Spanish
- Extensive multi-media technical resources to help you

- We investigate all quality concerns to ensure our products perform to the highest standards

If the product does not perform as described on this datasheet, we will offer a refund or replacement. For full details of the Abpromise, please visit <http://www.abcam.com/abpromise> or contact our technical team.

Terms and conditions

- Guarantee only valid for products bought direct from Abcam or one of our authorized distributors