


Product datasheet

Anti-STAT5α antibody ab31377

2 Images

Overview

<b>Product name</b>	Anti-STAT5a antibody
<b>Description</b>	Rabbit polyclonal to STAT5a
<b>Host species</b>	Rabbit
<b>Specificity</b>	ab31377 detects endogenous levels of STAT5A protein around Tyrosine 694.
<b>Tested applications</b>	<b>Suitable for:</b> ELISA, WB, IHC-P
<b>Species reactivity</b>	<b>Reacts with:</b> Human <b>Predicted to work with:</b> Mouse, Rat 
<b>Immunogen</b>	Synthesized non-phosphopeptide derived from human STAT5A around the phosphorylation site of Tyrosine 694.
<b>Positive control</b>	HeLa cell lysate, Breast carcinoma tissue.

Properties

<b>Form</b>	Liquid
<b>Storage instructions</b>	Shipped at 4°C. Upon delivery aliquot and store at -20°C. Avoid freeze / thaw cycles.
<b>Storage buffer</b>	Preservative: 0.02% Sodium Azide Constituents: 50% Glycerol, PBS[without Calcium and Magnesium ions], 150mM Sodium chloride, pH 7.4
<b>Purity</b>	Immunogen affinity purified
<b>Clonality</b>	Polyclonal
<b>Isotype</b>	IgG

Applications

Our [Abpromise guarantee](#) covers the use of **ab31377** in the following tested applications.

The application notes include recommended starting dilutions; optimal dilutions/concentrations should be determined by the end user.

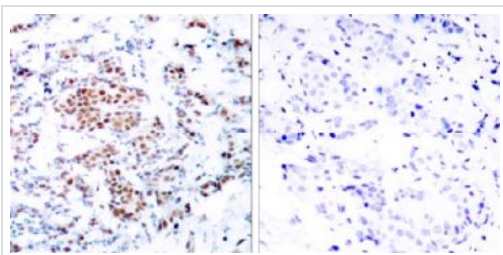
Application	Abreviews	Notes
ELISA		1/10000.

Application	Abreviews	Notes
WB		1/500 - 1/1000. Predicted molecular weight: 91 kDa.
IHC-P		Use at an assay dependent concentration.

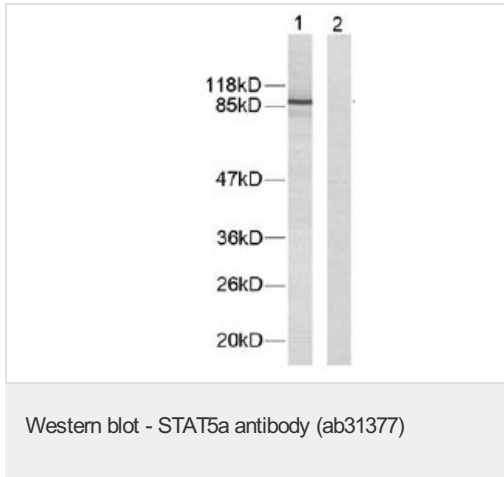
## Target

<b>Function</b>	Carries out a dual function: signal transduction and activation of transcription. Binds to the GAS element and activates PRL-induced transcription.
<b>Sequence similarities</b>	Belongs to the transcription factor STAT family. Contains 1 SH2 domain.
<b>Post-translational modifications</b>	Tyrosine phosphorylated in response to IL-2, IL-3, IL-7, IL-15, GM-CSF, growth hormone, prolactin, erythropoietin and thrombopoietin. Tyrosine phosphorylation is required for DNA-binding activity and dimerization. Serine phosphorylation is also required for maximal transcriptional activity.
<b>Cellular localization</b>	Cytoplasm. Nucleus. Translocated into the nucleus in response to phosphorylation.

## Images



Immunohistochemistry (Paraffin-embedded sections)  
- STAT5a antibody (ab31377)



**Lane 1** : Anti-STAT5a antibody (ab31377) at 1/500 dilution

**Lane 2** : Anti-STAT5a antibody (ab31377) at 1/500 dilution (preincubated with synthesized peptide)

**All lanes** : HeLa cell extract.

**Predicted band size:** 91 kDa

**Observed band size:** 89 kDa

**Additional bands at:** 83 kDa. We are unsure as to the identity of these extra bands.

**Please note:** All products are "FOR RESEARCH USE ONLY AND ARE NOT INTENDED FOR DIAGNOSTIC OR THERAPEUTIC USE"

### Our Abpromise to you: Quality guaranteed and expert technical support

- Replacement or refund for products not performing as stated on the datasheet
- Valid for 12 months from date of delivery
- Response to your inquiry within 24 hours
- We provide support in Chinese, English, French, German, Japanese and Spanish
- Extensive multi-media technical resources to help you
- We investigate all quality concerns to ensure our products perform to the highest standards

If the product does not perform as described on this datasheet, we will offer a refund or replacement. For full details of the Abpromise, please visit <http://www.abcam.com/abpromise> or contact our technical team.

### Terms and conditions

- Guarantee only valid for products bought direct from Abcam or one of our authorized distributors