

Product datasheet

Anti-SYCE2 antibody ab107745

1 Image

Overview

<b>Product name</b>	Anti-SYCE2 antibody
<b>Description</b>	Rabbit polyclonal to SYCE2
<b>Host species</b>	Rabbit
<b>Tested applications</b>	<b>Suitable for:</b> WB
<b>Species reactivity</b>	<b>Reacts with:</b> Human
<b>Immunogen</b>	Synthetic peptide conjugated to KLH, between amino acids 7-37 from the N-terminal region of Human SYCE2 (NP_001099048.1).
<b>Positive control</b>	MDA-MB231 cell line lysate.

Properties

<b>Form</b>	Liquid
<b>Storage instructions</b>	Shipped at 4°C. Store at 4°C (up to 6 months). Store at -20°C long term.
<b>Storage buffer</b>	Preservative: 0.09% Sodium Azide Constituents: PBS
<b>Purity</b>	Immunogen affinity purified
<b>Purification notes</b>	ab107745 is purified through a protein A column, followed by peptide affinity purification.
<b>Clonality</b>	Polyclonal
<b>Isotype</b>	IgG

Applications

Our [Abpromise guarantee](#) covers the use of **ab107745** in the following tested applications.

The application notes include recommended starting dilutions; optimal dilutions/concentrations should be determined by the end user.

Application	Abreviews	Notes
WB		1/100 - 1/500. Predicted molecular weight: 25 kDa.

Target

---

**Function**

Major component of the transverse central element of synaptonemal complexes (SCS), formed between homologous chromosomes during meiotic prophase. Requires SYCP1 in order to be incorporated into the central element. May have a role in the synaptonemal complex assembly, stabilization and recombination.

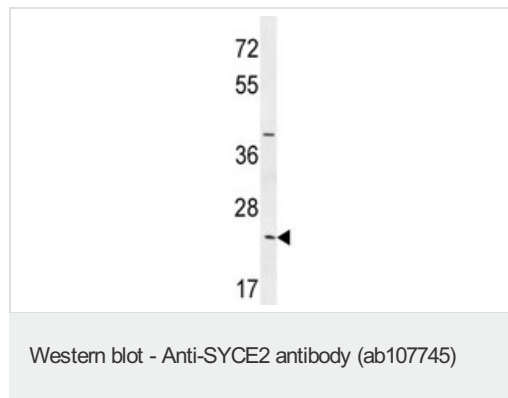
**Sequence similarities**

Belongs to the SYCE family.

**Cellular localization**

Nucleus. Associates with chromatin. In prophase I stage of meiosis, localizes in the transverse central elements of the central region between lateral elements of the synaptonemal complexes. Found only where the chromosome cores are synapsed. Colocalizes with SYCE1 in the central elements.

---

**Images**

Anti-SYCE2 antibody (ab107745) at 1/100 dilution + MDA-MB231 cell line lysate at 35 µg

**Predicted band size:** 25 kDa

**Please note:** All products are "FOR RESEARCH USE ONLY AND ARE NOT INTENDED FOR DIAGNOSTIC OR THERAPEUTIC USE"

---

**Our Abpromise to you: Quality guaranteed and expert technical support**

- Replacement or refund for products not performing as stated on the datasheet
- Valid for 12 months from date of delivery
- Response to your inquiry within 24 hours
- We provide support in Chinese, English, French, German, Japanese and Spanish
- Extensive multi-media technical resources to help you
- We investigate all quality concerns to ensure our products perform to the highest standards

If the product does not perform as described on this datasheet, we will offer a refund or replacement. For full details of the Abpromise, please visit <http://www.abcam.com/abpromise> or contact our technical team.

**Terms and conditions**

- Guarantee only valid for products bought direct from Abcam or one of our authorized distributors