


Product datasheet

Anti-Serum Amyloid P antibody [342CT9.4.7] ab87914

1 Image

Overview

Product name	Anti-Serum Amyloid P antibody [342CT9.4.7]
Description	Mouse monoclonal [342CT9.4.7] to Serum Amyloid P
Tested applications	Suitable for: WB
Species reactivity	Reacts with: Human Predicted to work with: Chimpanzee 
Immunogen	Recombinant Full Length Protein
Positive control	This antibody gave a positive signal in the following human tissue lysates: plasma; spleen; bladder.
General notes	This antibody clone is manufactured by Abcam.

Properties

Form	Liquid
Storage instructions	Shipped at 4°C. Upon delivery aliquot and store at -20°C. Avoid repeated freeze / thaw cycles.
Storage buffer	pH: 7.40 Preservative: 0.02% Sodium azide Constituent: PBS
Purity	Protein G purified
Clonality	Monoclonal
Clone number	342CT9.4.7
Myeloma	Sp2/0
Isotype	IgG2a

Applications

Our [Abpromise guarantee](#) covers the use of **ab87914** in the following tested applications.

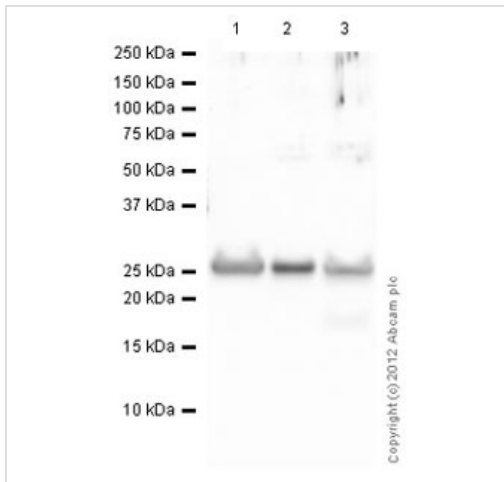
The application notes include recommended starting dilutions; optimal dilutions/concentrations should be determined by the end user.

Application	Abreviews	Notes
WB		Use a concentration of 5 µg/ml. Detects a band of approximately 25 kDa (predicted molecular weight: 25 kDa). Block using 3% milk.

Target

Function	Can interact with DNA and histones and may scavenge nuclear material released from damaged circulating cells. May also function as a calcium-dependent lectin.
Tissue specificity	Found in serum and urine.
Involvement in disease	Note=SAP is a precursor of amyloid component P which is found in basement membrane and associated with amyloid deposits.
Sequence similarities	Belongs to the pentaxin family. Contains 1 pentaxin domain.
Post-translational modifications	N-glycosylated with a complex biantennary oligosaccharide chain with a sialic acid at the end (disialo-SAP). Monosialo-SAP as well as asialo-SAP are also detected (PubMed:15174148).
Cellular localization	Secreted.

Images



Western blot - Anti-Serum Amyloid P antibody
[342CT9.4.7] (ab87914)

All lanes : Anti-Serum Amyloid P antibody
[342CT9.4.7] (ab87914) at 5 µg/ml

Lane 1 : Human Plasma Total Protein Lysate

Lane 2 : Human spleen tissue lysate - total
protein (ab29699)

Lane 3 : Human bladder tissue lysate -
soluble fraction (female, 45 years) (ab44654)

Lysates/proteins at 20 µg per lane.

Secondary

Goat Anti-Mouse IgG H&L (HRP)
preadsorbed (ab97040) at 1/5000 dilution
Developed using the ECL technique

Performed under reducing conditions.

Predicted band size : 25 kDa

Observed band size : 25 kDa

Exposure time : 8 minutes

Please note: All products are "FOR RESEARCH USE ONLY AND ARE NOT INTENDED FOR DIAGNOSTIC OR THERAPEUTIC USE"

Our Abpromise to you: Quality guaranteed and expert technical support

- Replacement or refund for products not performing as stated on the datasheet
- Valid for 12 months from date of delivery
- Response to your inquiry within 24 hours
- We provide support in Chinese, English, French, German, Japanese and Spanish
- Extensive multi-media technical resources to help you
- We investigate all quality concerns to ensure our products perform to the highest standards

If the product does not perform as described on this datasheet, we will offer a refund or replacement. For full details of the Abpromise, please visit <http://www.abcam.com/abpromise> or contact our technical team.

Terms and conditions

- Guarantee only valid for products bought direct from Abcam or one of our authorized distributors