


Product datasheet

Anti-Serum Response Factor SRF antibody ab101246

1 Image

Overview

Product name	Anti-Serum Response Factor SRF antibody
Description	Rabbit polyclonal to Serum Response Factor SRF
Host species	Rabbit
Tested applications	Suitable for: WB
Species reactivity	Reacts with: Human Predicted to work with: Horse, Chicken, Cow, Dog, Pig 
Immunogen	Synthetic peptide conjugated to KLH derived from within residues 200 - 300 of Human Serum Response Factor SRF. Read Abcam's proprietary immunogen policy
Positive control	This antibody gave a positive signal in the following whole cell lysates: HeLa; HeLa Nuclear; Jurkat; HEK293; MCF7; NIH3T3; F9.

Properties

Form	Liquid
Storage instructions	Shipped at 4°C. Store at +4°C short term (1-2 weeks). Upon delivery aliquot. Store at -20°C or -80°C. Avoid freeze / thaw cycle.
Storage buffer	pH: 7.40 Preservative: 0.02% Sodium azide Constituent: PBS Note: Batches of this product that have a concentration < 1mg/ml may have BSA added as a stabilising agent. If you would like information about the formulation of a specific lot, please contact our scientific support team who will be happy to help.
Purity	Immunogen affinity purified
Clonality	Polyclonal
Isotype	IgG

Applications

Our [Abpromise guarantee](#) covers the use of **ab101246** in the following tested applications.

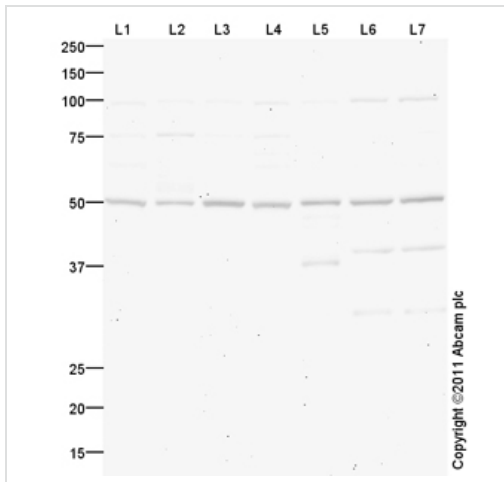
The application notes include recommended starting dilutions; optimal dilutions/concentrations should be determined by the end user.

Application	Abreviews	Notes
WB		Use a concentration of 1 µg/ml. Detects a band of approximately 51 kDa (predicted molecular weight: 51 kDa).

Target

Function	SRF is a transcription factor that binds to the serum response element (SRE), a short sequence of dyad symmetry located 300 bp to the 5' of the site of transcription initiation of some genes (such as FOS). Required for cardiac differentiation and maturation.
Sequence similarities	Contains 1 MADS-box domain.
Post-translational modifications	Phosphorylated by PRKDC.
Cellular localization	Nucleus.

Images



Western blot - Serum Response Factor SRF antibody (ab101246)

All lanes : Anti-Serum Response Factor SRF antibody (ab101246) at 1 μ g

Lane 1 : HeLa (Human epithelial carcinoma cell line) Whole Cell Lysate

Lane 2 : HeLa (Human epithelial carcinoma cell line) Nuclear Lysate

Lane 3 : Jurkat (Human T cell lymphoblast-like cell line) Whole Cell Lysate

Lane 4 : HEK293 (Human embryonic kidney cell line) Whole Cell Lysate

Lane 5 : MCF7 (Human breast adenocarcinoma cell line) Whole Cell Lysate

Lane 6 : NIH 3T3 (Mouse embryonic fibroblast cell line) Whole Cell Lysate

Lane 7 : F9 (Mouse embryonic carcinoma cell line) Whole Cell Lysate

Lysates/proteins at 20 μ g per lane.

Secondary

All lanes : Goat Anti-Rabbit IgG H&L (HRP) preadsorbed ([ab97080](#)) at 1/5000 dilution

Developed using the ECL technique.

Performed under reducing conditions.

Predicted band size: 51 kDa

Observed band size: 51 kDa

Additional bands at: 100 kDa, 40 kDa. We are unsure as to the identity of these extra bands.

Exposure time: 20 minutes

Abcam recommends using milk as the blocking agent. Abcam welcomes customer feedback and would appreciate any comments regarding this product and the data presented above.

Our Abpromise to you: Quality guaranteed and expert technical support

- Replacement or refund for products not performing as stated on the datasheet
- Valid for 12 months from date of delivery
- Response to your inquiry within 24 hours

- We provide support in Chinese, English, French, German, Japanese and Spanish
- Extensive multi-media technical resources to help you
- We investigate all quality concerns to ensure our products perform to the highest standards

If the product does not perform as described on this datasheet, we will offer a refund or replacement. For full details of the Abpromise, please visit <http://www.abcam.com/abpromise> or contact our technical team.

Terms and conditions

- Guarantee only valid for products bought direct from Abcam or one of our authorized distributors