

Product datasheet

Anti-Staphylococcus aureus antibody ab20920

★★★★★ 7 Abreviews 11 References 2 Images

Overview

Product name	Anti-Staphylococcus aureus antibody
Description	Rabbit polyclonal to Staphylococcus aureus
Specificity	Soluble and structural antigens of the whole bacterium. Antiserum is not absorbed for related microorganisms.
Tested applications	Suitable for: ICC/IF, IHC-Fr
Species reactivity	Reacts with: Staphylococcus aureus
Immunogen	<i>Staphylococcus aureus</i> strain ATCC 27660 (mixture of intact organisms and lysed cells).

Properties

Form	Liquid
Storage instructions	Shipped at 4°C. Store at +4°C short term (1-2 weeks). Upon delivery aliquot. Store at -20°C or -80°C. Avoid freeze / thaw cycle.
Storage buffer	Preservative: 0.1% Sodium Azide Constituents: 0.01M PBS, pH 7.2
Purity	Protein A purified
Clonality	Polyclonal
Isotype	IgG

Applications

Our [Abpromise guarantee](#) covers the use of **ab20920** in the following tested applications.

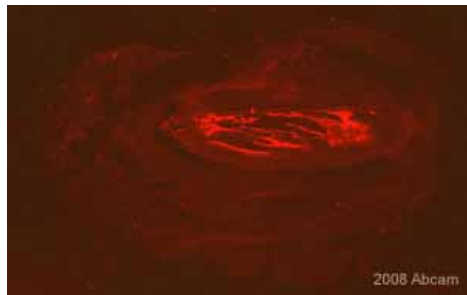
The application notes include recommended starting dilutions; optimal dilutions/concentrations should be determined by the end user.

Application	Abreviews	Notes
ICC/IF	★★★★★	Use at an assay dependent concentration.
IHC-Fr	★★★★★	Use at an assay dependent concentration. Use with acetone fixed tissues.

Relevance

Staphylococcus aureus are gram-positive bacteria that, although part of the normal flora of humans (nasal passages, skin and mucous membranes), have the potential to become opportunistic pathogens. S. aureus is a frequent cause of a wide range of infections and some bacterial strains have become resistant to many commonly used antibiotics.

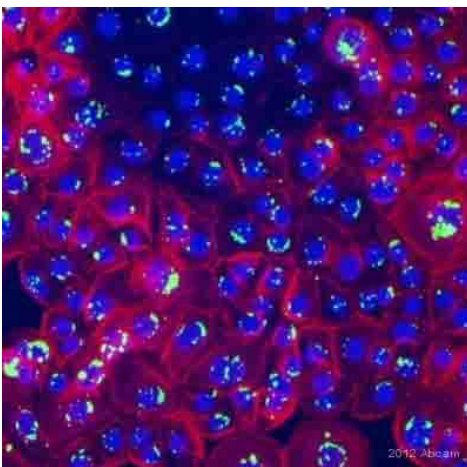
Images



Immunohistochemistry (Frozen sections) -
Staphylococcus aureus antibody (ab20920)

This image is courtesy of an Abreview submitted by Dr Dagmar Salber

ab20920 staining an abscess in rat calf tissue prepared as a 20 µm cryoslice. Tissue was fixed in paraformaldehyde, permeabilised with 0,5% Triton X100 in PBS, and blocked with 10% serum plus 1% BSA for 1 hour at room temperature. The primary antibody was diluted 1/500 with PBS plus 3-5% Serum, 0,5% Triton X100 and incubated for 24 hours at 20°C. An Alexa Fluor® 568 goat anti-rabbit was used as the secondary



Immunocytochemistry/ Immunofluorescence - Anti-Staphylococcus aureus antibody (ab20920)

Image courtesy of an anonymous Abreview.

ab20920 staining Staphylococcus aureus in human keratinocytes by Immunocytochemistry/ Immunofluorescence.

Cells were fixed in methanol, permeabilized using 0.1% saponin/ PBS, blocked with 4% BSA for 30 minutes at 25°C and then incubated with ab20920 at 10µg/ml for 14 hours at 4°C. The secondary used was an Alexa-Fluor 488 conjugated goat anti-rabbit polyclonal used at a 1/100 dilution.

Red: cadherin

Blue: DAPI

Green: anti-Staphylococcus aureus (ab20920)

Please note: All products are "FOR RESEARCH USE ONLY AND ARE NOT INTENDED FOR DIAGNOSTIC OR THERAPEUTIC USE"

Our Abpromise to you: Quality guaranteed and expert technical support

- Replacement or refund for products not performing as stated on the datasheet
- Valid for 12 months from date of delivery
- Response to your inquiry within 24 hours

- We provide support in Chinese, English, French, German, Japanese and Spanish
- Extensive multi-media technical resources to help you
- We investigate all quality concerns to ensure our products perform to the highest standards

If the product does not perform as described on this datasheet, we will offer a refund or replacement. For full details of the Abpromise, please visit <http://www.abcam.com/abpromise> or contact our technical team.

Terms and conditions

- Guarantee only valid for products bought direct from Abcam or one of our authorized distributors