

Product datasheet

Anti-Steroid sulfatase antibody ab83668

1 Image

Overview

Product name	Anti-Steroid sulfatase antibody
Description	Rabbit polyclonal to Steroid sulfatase
Host species	Rabbit
Tested applications	Suitable for: WB
Species reactivity	Reacts with: Human Predicted to work with: Horse, Guinea pig, Cow, Pig, Zebrafish
Immunogen	Synthetic peptide corresponding to a region within internal sequence amino acids 396-445 (EPTSNMDIFP TVAKLAGAPL PEDRIIDGRD LMPLEGGKSQ RSDHEFLFHY) of Human Steroid sulfatase (NP_000342). Run BLAST with ExPASy Run BLAST with NCBI
Positive control	Human Placenta lysate.

Properties

Form	Liquid
Storage instructions	Shipped at 4°C. Upon delivery aliquot and store at -20°C. Avoid repeated freeze / thaw cycles.
Storage buffer	Preservative: None Constituents: 2% Sucrose, PBS
Purity	Immunogen affinity purified
Clonality	Polyclonal
Isotype	IgG

Applications

Our [Abpromise guarantee](#) covers the use of **ab83668** in the following tested applications.

The application notes include recommended starting dilutions; optimal dilutions/concentrations should be determined by the end user.

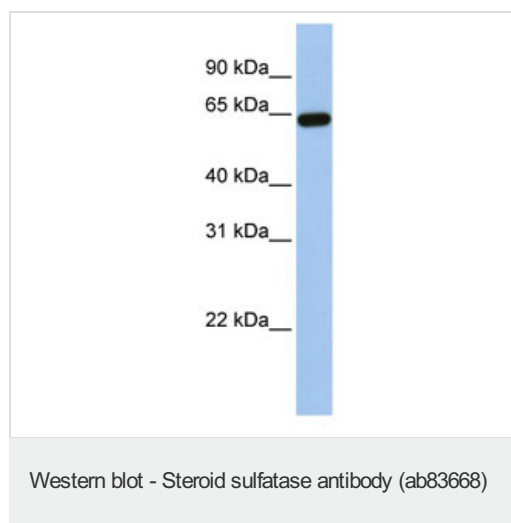
Application	Abreviews	Notes

Application	Abreviews	Notes
WB		Use a concentration of 1 µg/ml. Detects a band of approximately 63 kDa (predicted molecular weight: 63 kDa). Can be blocked with Steroid sulfatase peptide (ab199997) . Good results were obtained when blocked with 5% non-fat dry milk in 0.05% PBS-T.

Target

Function	Conversion of sulfated steroid precursors to estrogens during pregnancy.
Involvement in disease	Defects in STS are the cause of ichthyosis X-linked (IXL) [MIM:308100]. Ichthyosis X-linked is a keratinization disorder manifesting with mild erythroderma and generalized exfoliation of the skin within a few weeks after birth. Affected boys later develop large, polygonal, dark brown scales, especially on the neck, extremities, trunk, and buttocks.
Sequence similarities	Belongs to the sulfatase family.
Post-translational modifications	The conversion to 3-oxoalanine (also known as C-formylglycine, FGly), of a serine or cysteine residue in prokaryotes and of a cysteine residue in eukaryotes, is critical for catalytic activity.
Cellular localization	Endoplasmic reticulum membrane.

Images



Anti-Steroid sulfatase antibody (ab83668) at 1 µg/ml (in 5% skim milk / PBS buffer) + Human placenta lysate at 10 µg

Secondary

HRP conjugated anti-Rabbit IgG at 1/50000 dilution

Predicted band size: 63 kDa

Observed band size: 63 kDa

Gel concentration: 12%

Please note: All products are "FOR RESEARCH USE ONLY AND ARE NOT INTENDED FOR DIAGNOSTIC OR THERAPEUTIC USE"

Our Abpromise to you: Quality guaranteed and expert technical support

- Replacement or refund for products not performing as stated on the datasheet
- Valid for 12 months from date of delivery
- Response to your inquiry within 24 hours

- We provide support in Chinese, English, French, German, Japanese and Spanish
- Extensive multi-media technical resources to help you
- We investigate all quality concerns to ensure our products perform to the highest standards

If the product does not perform as described on this datasheet, we will offer a refund or replacement. For full details of the Abpromise, please visit <http://www.abcam.com/abpromise> or contact our technical team.

Terms and conditions

- Guarantee only valid for products bought direct from Abcam or one of our authorized distributors