

Product datasheet

Anti-Stromal interaction molecule 1 antibody ab57834

★★★★☆ 7 Abreviews 3 References 5 Images

Overview

Product name	Anti-Stromal interaction molecule 1 antibody
Description	Mouse monoclonal to Stromal interaction molecule 1
Host species	Mouse
Tested applications	Suitable for: WB, IHC-P, ICC, Flow Cyt, ICC/IF, IP
Species reactivity	Reacts with: Human
Immunogen	Recombinant full length protein, corresponding to amino acids 24-686 of Human Stromal interaction molecule 1
General notes	Abcam is committed to meeting high standards of ethical manufacturing and has decided to discontinue this product by June 2019 as it has been generated by the ascites

Properties

Form	Liquid
Storage instructions	Shipped at 4°C. Upon delivery aliquot and store at -20°C or -80°C. Avoid repeated freeze / thaw cycles.
Storage buffer	Preservative: None PBS, pH 7.2
Purity	Protein G purified
Clonality	Monoclonal
Isotype	IgG2a
Light chain type	kappa

Applications

Our [Abpromise guarantee](#) covers the use of **ab57834** in the following tested applications.

The application notes include recommended starting dilutions; optimal dilutions/concentrations should be determined by the end user.

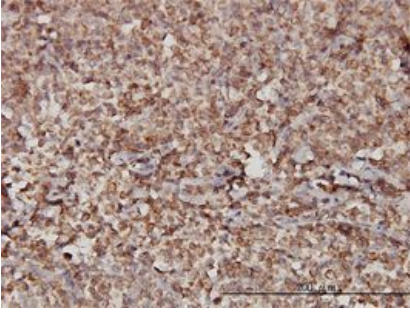
Application	Abreviews	Notes
WB	★★★★☆	Use a concentration of 1 - 5 µg/ml. Predicted molecular weight: 77 kDa.

Application	Abreviews	Notes
IHC-P		Use a concentration of 3 µg/ml.
ICC	★★★★★	Use at an assay dependent concentration.
Flow Cyt		Use 0.5µg for 10 ⁶ cells. ab170191 - Mouse monoclonal IgG2a, is suitable for use as an isotype control with this antibody.
ICC/IF	★★★★☆	Use a concentration of 10 µg/ml.
IP	★★★★★	Use at 4 µg/mg of lysate.

Target

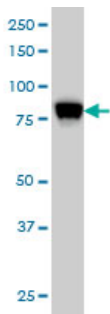
Function	Plays a role in mediating Ca(2+) influx following depletion of intracellular Ca(2+) stores. Acts as Ca(2+) sensor in the endoplasmic reticulum via its EF-hand domain. Upon Ca(2+) depletion, translocates from the endoplasmic reticulum to the plasma membrane where it activates the Ca(2+) release-activated Ca(2+) (CRAC) channel subunit, TMEM142A/ORAI1.
Tissue specificity	Ubiquitously expressed in various human primary cells and tumor cell lines.
Involvement in disease	Defects in STIM1 are the cause of immune dysfunction with T-cell inactivation due to calcium entry defect type 2 (IDTICED2) [MIM:612783]. IDTICED2 is an immune disorder characterized by recurrent infections, impaired T-cell activation and proliferative response, decreased T-cell production of cytokines, lymphadenopathy, and normal lymphocytes counts and serum immunoglobulin levels. Additional features include thrombocytopenia, autoimmune hemolytic anemia, non-progressive myopathy, partial iris hypoplasia, hepatosplenomegaly and defective enamel dentition.
Sequence similarities	Contains 1 EF-hand domain. Contains 1 SAM (sterile alpha motif) domain.
Domain	The microtubule tip localization signal (MtLS) motif; mediates interaction with MAPRE1 and targeting to the growing microtubule plus ends.
Post-translational modifications	Glycosylation is required for cell surface expression. Phosphorylated predominantly on Ser residues.
Cellular localization	Cell membrane. Endoplasmic reticulum membrane. Cytoplasm > cytoskeleton. Translocates from the endoplasmic reticulum to the cell membrane in response to a depletion of intracellular calcium. Associated with the microtubule network at the growing distal tip of microtubules.

Images



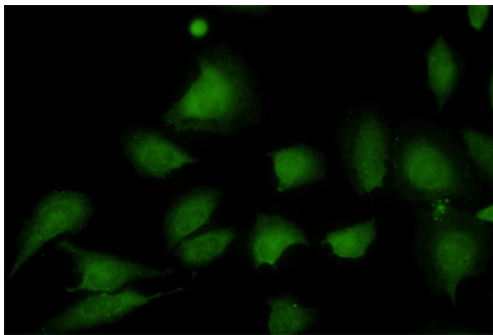
Stromal interaction molecule 1 antibody (ab57834) used in immunohistochemistry at 3ug/ml on formalin fixed and paraffin embedded human malignant lymphoma, diffuse large B.

Immunohistochemistry (Formalin/PFA-fixed paraffin-embedded sections) - Anti-Stromal interaction molecule 1 antibody (ab57834)



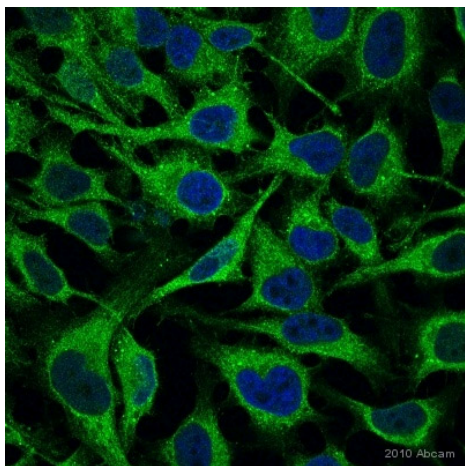
Stromal interaction molecule 1 antibody (ab57834) at 1ug/lane + HeLa cell lysate at 25ug/lane.

Western blot - Anti-Stromal interaction molecule 1 antibody (ab57834)



ab57834 at 10 ug/ml staining Stromal interaction molecule 1 in human Hella cells by Immunocytochemistry/ Immunofluorescence.

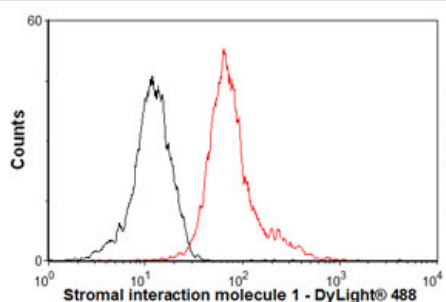
Immunocytochemistry/ Immunofluorescence - Anti-Stromal interaction molecule 1 antibody (ab57834)



Immunocytochemistry/ Immunofluorescence - Anti-Stromal interaction molecule 1 antibody (ab57834)

This image is courtesy of an anonymous Abreview

ab57834 staining the stromal interaction molecule in HeLa cells by immunocytochemistry/immunofluorescence (ICC/IF). Cells were fixed with paraformaldehyde and permeabilized with 0.5% TritonX. Samples were incubated with primary antibody (1/200) for 1 hour at 24°C. An Alexa Fluor® 488-conjugated chicken anti-mouse polyclonal (1/1000) was used as the secondary.



Flow Cytometry - Anti-Stromal interaction molecule 1 antibody (ab57834)

Overlay histogram showing HeLa cells stained with ab57834 (red line). The cells were fixed with 80% methanol (5 min) and then permeabilized with 0.1% PBS-Tween for 20 min. The cells were then incubated in 1x PBS / 10% normal goat serum / 0.3M glycine to block non-specific protein-protein interactions followed by the antibody (ab57834, 0.5µg/1x10⁶ cells) for 30 min at 22°C. The secondary antibody used was DyLight® 488 goat anti-mouse IgG (H+L) (ab96879) at 1/500 dilution for 30 min at 22°C. Isotype control antibody (black line) was mouse IgG2a [ICIGG2A] (ab91361, 1µg/1x10⁶ cells) used under the same conditions. Acquisition of >5,000 events was performed.

Please note: All products are "FOR RESEARCH USE ONLY AND ARE NOT INTENDED FOR DIAGNOSTIC OR THERAPEUTIC USE"

Our Abpromise to you: Quality guaranteed and expert technical support

- Replacement or refund for products not performing as stated on the datasheet
- Valid for 12 months from date of delivery
- Response to your inquiry within 24 hours
- We provide support in Chinese, English, French, German, Japanese and Spanish
- Extensive multi-media technical resources to help you

- We investigate all quality concerns to ensure our products perform to the highest standards

If the product does not perform as described on this datasheet, we will offer a refund or replacement. For full details of the Abpromise, please visit <http://www.abcam.com/abpromise> or contact our technical team.

Terms and conditions

- Guarantee only valid for products bought direct from Abcam or one of our authorized distributors