

Product datasheet

Anti-Synaptogyrin 3 antibody ab106460

3 Images

Overview

Product name	Anti-Synaptogyrin 3 antibody
Description	Rabbit polyclonal to Synaptogyrin 3
Specificity	ab106460 does not cross-react with other Synaptogyrin family members
Tested applications	Suitable for: ICC/IF, WB, IHC-P
Species reactivity	Reacts with: Mouse, Rat, Human
Immunogen	A 19 amino acid peptide from near the C terminal of Human Synaptogyrin 3 (NP_004200).
Positive control	WB: Mouse brain tissue lysate IHC-P: Rat brain tissue

Properties

Form	Liquid
Storage instructions	Shipped at 4°C. Store at 4°C (stable for up to 12 months).
Storage buffer	Preservative: 0.02% Sodium Azide Constituents: PBS
Purity	Immunogen affinity purified
Clonality	Polyclonal
Isotype	IgG

Applications

Our [Abpromise guarantee](#) covers the use of **ab106460** in the following tested applications.

The application notes include recommended starting dilutions; optimal dilutions/concentrations should be determined by the end user.

Application	Abreviews	Notes
ICC/IF		Use a concentration of 20 µg/ml.
WB		Use a concentration of 1 - 2 µg/ml. Predicted molecular weight: 25 kDa.
IHC-P		Use a concentration of 2.5 µg/ml. Perform heat mediated antigen retrieval via the microwave method before commencing with IHC staining protocol.

Target

Function

Involved in the positive regulation of dopamine transporter activity. Probably facilitates the physical and functional interactions of the transporter with the dopamine vesicular storage system, allowing a more efficient loading of the vesicles with extracellular dopamine after release.

Tissue specificity

Expressed in brain and placenta.

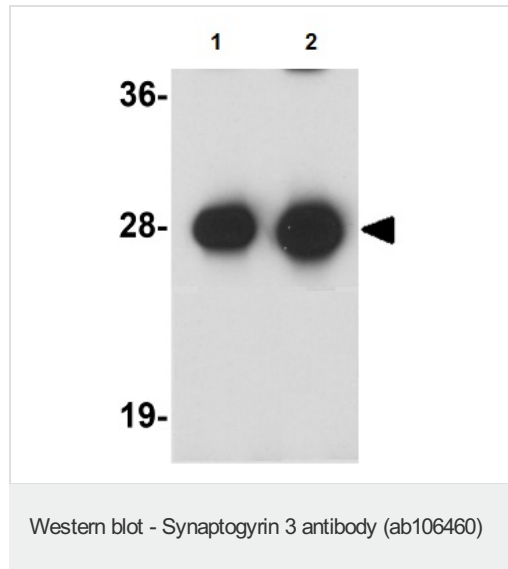
Sequence similarities

Belongs to the synaptogyrin family.
Contains 1 MARVEL domain.

Cellular localization

Membrane. Cytoplasmic vesicle > secretory vesicle > synaptic vesicle. Cell junction > synapse.
Found at the neuromuscular synapses.

Images



Lane 1 : Anti-Synaptogyrin 3 antibody

(ab106460) at 1 $\mu\text{g/ml}$

Lane 2 : Anti-Synaptogyrin 3 antibody

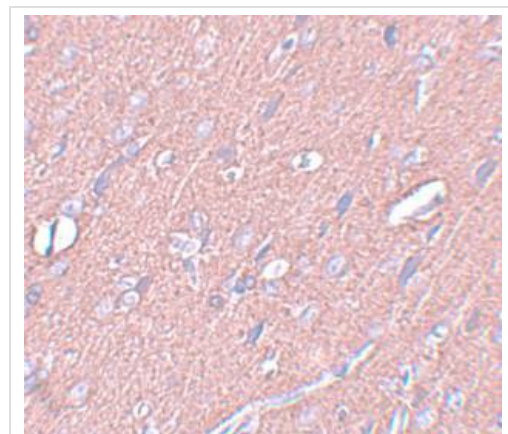
(ab106460) at 2 $\mu\text{g/ml}$

Lane 1 : Mouse brain tissue lysate

Lane 2 : Mouse brain tissue lysate

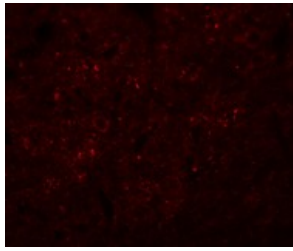
Lysates/proteins at 15 μg per lane.

Predicted band size : 25 kDa



ab106460, at 2.5 $\mu\text{g/ml}$, staining Synaptogyrin 3 in paraffin-embedded rat brain tissue.

Immunohistochemistry (Formalin/PFA-fixed paraffin-embedded sections) - Synaptogyrin 3 antibody (ab106460)



Immunofluorescence of SYNGR3 in Rat Brain cells using ab106460 at 20 ug/ml.

Immunocytochemistry/ Immunofluorescence-Anti-Synaptogyrin 3 antibody(ab106460)

Please note: All products are "FOR RESEARCH USE ONLY AND ARE NOT INTENDED FOR DIAGNOSTIC OR THERAPEUTIC USE"

Our Abpromise to you: Quality guaranteed and expert technical support

- Replacement or refund for products not performing as stated on the datasheet
- Valid for 12 months from date of delivery
- Response to your inquiry within 24 hours
- We provide support in Chinese, English, French, German, Japanese and Spanish
- Extensive multi-media technical resources to help you
- We investigate all quality concerns to ensure our products perform to the highest standards

If the product does not perform as described on this datasheet, we will offer a refund or replacement. For full details of the Abpromise, please visit <http://www.abcam.com/abpromise> or contact our technical team.

Terms and conditions

- Guarantee only valid for products bought direct from Abcam or one of our authorized distributors