


Product datasheet

Anti-Syntaxin 1A + Syntaxin 1B2 antibody ab39986

1 References 1 Image

Overview

<b>Product name</b>	Anti-Syntaxin 1A + Syntaxin 1B2 antibody
<b>Description</b>	Goat polyclonal to Syntaxin 1A + Syntaxin 1B2
<b>Tested applications</b>	<b>Suitable for:</b> WB, ELISA
<b>Species reactivity</b>	<b>Reacts with:</b> Mouse <b>Predicted to work with:</b> Rat, Sheep, Chicken, Cow, Human, Zebrafish 
<b>Immunogen</b>	Synthetic peptide: KDRTQELRTAKD , corresponding to N terminal amino acids 2/13 of Human Syntaxin 1A + Syntaxin 1B2 <a href="#">Run BLAST with</a> <a href="#">Run BLAST with</a>
<b>Positive control</b>	Mouse Brain lysate

Properties

<b>Form</b>	Liquid
<b>Storage instructions</b>	Shipped at 4°C. Upon delivery aliquot and store at -20°C or -80°C. Avoid repeated freeze / thaw cycles.
<b>Storage buffer</b>	Preservative: 0.02% Sodium Azide Constituents: 0.5% BSA, Tris buffered saline, pH 7.3
<b>Purity</b>	Immunogen affinity purified
<b>Purification notes</b>	Purified from goat serum by ammonium sulphate precipitation followed by antigen affinity chromatography using the immunizing peptide.
<b>Clonality</b>	Polyclonal
<b>Isotype</b>	IgG

Applications

Our [Abpromise guarantee](#) covers the use of **ab39986** in the following tested applications.

The application notes include recommended starting dilutions; optimal dilutions/concentrations should be determined by the end user.

Application	Abreviews	Notes
WB		
ELISA		

### Application notes

ELISA: Use at an assay dependent dilution. Antibody detection limit dilution 1:32,000  
 WB: Use at a concentration of 0.01 - 0.03 µg/ml. Detects a band of approximately 35 kDa. (predicted molecular weight: 33 kDa).

Not yet tested in other applications.  
 Optimal dilutions/concentrations should be determined by the end user.

### Target

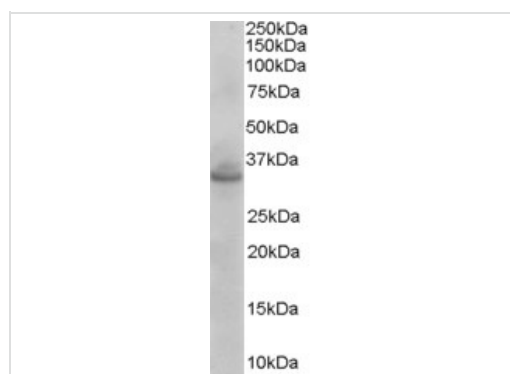
#### Relevance

Syntaxins are potentially involved in the docking of synaptic vesicles at presynaptic active zones and may play a key role in neurotransmitter exocytosis. Three isoforms are produced by alternative splicing. Isoform 1 is expressed in embryonic spinal chord and ganglia and in adult cerebellum and cerebral cortex. Isoform 2 is expressed in heart, liver, fat, skeletal muscle, kidney and brain. Syntaxin 1A interacts with VAPA and SYBU and is a member of the SNARE core complex containing SNAP25 and VAMP2. In addition, it is found in complexes with SNAP25, SNAP23 and VAMP8. Haploinsufficiency of STX1A may result in particular cardiovascular and musculo-skeletal abnormalities observed in Williams-Beuren syndrome, a rare developmental disorder.

#### Cellular localization

Cell membrane; single-pass type IV membrane protein; Isoform 2 is thought to be secreted

### Images



Anti-Syntaxin 1A + Syntaxin 1B2 antibody  
 (ab39986) at 0.003 µg/ml (for 1 hour) + Mouse  
 Brain lysate in RIPA buffer at 35 µg  
 Developed using the ECL technique

**Predicted band size** : 33 kDa

**Observed band size** : 35 kDa

Western blot - Syntaxin 1A + Syntaxin 1B2 antibody  
 (ab39986)

**Please note:** All products are "FOR RESEARCH USE ONLY AND ARE NOT INTENDED FOR DIAGNOSTIC OR THERAPEUTIC USE"

### Our Abpromise to you: Quality guaranteed and expert technical support

- Replacement or refund for products not performing as stated on the datasheet

- Valid for 12 months from date of delivery
- Response to your inquiry within 24 hours
  
- We provide support in Chinese, English, French, German, Japanese and Spanish
- Extensive multi-media technical resources to help you
- We investigate all quality concerns to ensure our products perform to the highest standards

If the product does not perform as described on this datasheet, we will offer a refund or replacement. For full details of the Abpromise, please visit <http://www.abcam.com/abpromise> or contact our technical team.

### **Terms and conditions**

---

- Guarantee only valid for products bought direct from Abcam or one of our authorized distributors