


Product datasheet

Anti-TBC1D14 antibody ab94609

1 Image

Overview

<b>Product name</b>	Anti-TBC1D14 antibody
<b>Description</b>	Rabbit polyclonal to TBC1D14
<b>Tested applications</b>	<b>Suitable for:</b> WB
<b>Species reactivity</b>	<b>Reacts with:</b> Human <b>Predicted to work with:</b> Mouse, Rat, Horse, Cow, Dog, Pig 
<b>Immunogen</b>	Synthetic peptide corresponding to a region within N terminal amino acids 2-51 (TDGKLTSTN GVAFMGILDG RPGNPLQNLQ HVNLKAPRL SAPEYGPCLK) of Human TBC1D14 (NP_001106832). <a href="#">Run BLAST with ExPASy</a> <a href="#">Run BLAST with NCBI</a>
<b>Positive control</b>	721_B cell lysate

Properties

<b>Form</b>	Liquid
<b>Storage instructions</b>	Shipped at 4°C. Upon delivery aliquot and store at -20°C. Avoid repeated freeze / thaw cycles.
<b>Storage buffer</b>	Preservative: None Constituents: 2% Sucrose, PBS
<b>Purity</b>	Immunogen affinity purified
<b>Clonality</b>	Polyclonal
<b>Isotype</b>	IgG

Applications

Our [Abpromise guarantee](#) covers the use of **ab94609** in the following tested applications.

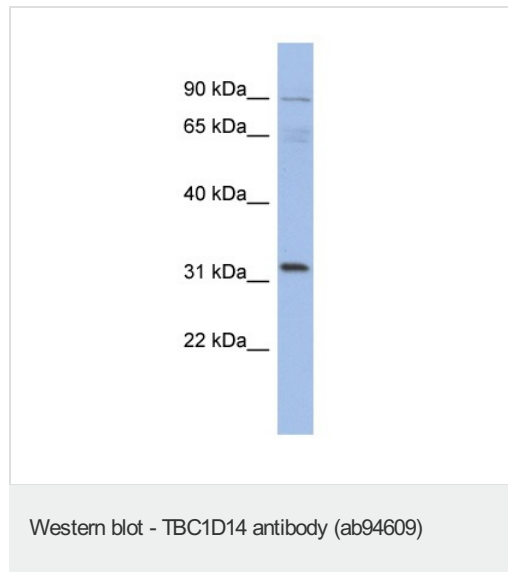
The application notes include recommended starting dilutions; optimal dilutions/concentrations should be determined by the end user.

Application	Abreviews	Notes
WB		Use at an assay dependent dilution. Predicted molecular weight: 78 kDa.

## Target

<b>Function</b>	Negative regulator of starvation-induced autophagosome formation.
<b>Sequence similarities</b>	Contains 1 Rab-GAP TBC domain.
<b>Cellular localization</b>	Golgi apparatus, cis-Golgi network. Golgi apparatus, trans-Golgi network. After amino acid starvation, Golgi apparatus-associated protein levels increase compared with fed conditions. May be cycling between the Golgi apparatus and an endosomal pool, redistributing to the Golgi apparatus upon starvation.

## Images



Anti-TBC1D14 antibody (ab94609) at 1 µg/ml  
(in 5% skim milk / PBS buffer) + 721\_B cell  
lysate at 10 µg

### Secondary

HRP conjugated anti-Rabbit IgG at 1/50000  
dilution

**Predicted band size : 78 kDa**

**Please note:** All products are "FOR RESEARCH USE ONLY AND ARE NOT INTENDED FOR DIAGNOSTIC OR THERAPEUTIC USE"

## Our Abpromise to you: Quality guaranteed and expert technical support

- Replacement or refund for products not performing as stated on the datasheet
- Valid for 12 months from date of delivery
- Response to your inquiry within 24 hours
- We provide support in Chinese, English, French, German, Japanese and Spanish
- Extensive multi-media technical resources to help you
- We investigate all quality concerns to ensure our products perform to the highest standards

If the product does not perform as described on this datasheet, we will offer a refund or replacement. For full details of the Abpromise, please visit <http://www.abcam.com/abpromise> or contact our technical team.

## Terms and conditions

- Guarantee only valid for products bought direct from Abcam or one of our authorized distributors