




Product datasheet

Anti-TGIF2LX antibody ab80423

1 Image

Overview

<b>Product name</b>	Anti-TGIF2LX antibody
<b>Description</b>	Rabbit polyclonal to TGIF2LX
<b>Host species</b>	Rabbit
<b>Tested applications</b>	<b>Suitable for:</b> WB, ELISA
<b>Species reactivity</b>	<b>Reacts with:</b> Human <b>Predicted to work with:</b> Chimpanzee, Gorilla 
<b>Immunogen</b>	Synthetic peptide within Human TGIF2LX aa 146-195 (internal sequence). The exact sequence is proprietary. Sequence: SGPSGPDNVQSLPLWPLPKGQMSREKQDPESAPSQKLTGIAQPKKKVKV  Database link: <a href="#">Q8IUE1</a>   <a href="#">Run BLAST with</a>  <a href="#">Run BLAST with</a>
<b>Positive control</b>	HeLa cell lysate.

Properties

<b>Form</b>	Liquid
<b>Storage instructions</b>	Shipped at 4°C. Upon delivery aliquot and store at -20°C. Avoid repeated freeze / thaw cycles.
<b>Storage buffer</b>	Preservative: None Constituents: 2% Sucrose, PBS
<b>Purity</b>	Immunogen affinity purified
<b>Clonality</b>	Polyclonal
<b>Isotype</b>	IgG

Applications

Our [Abpromise guarantee](#) covers the use of **ab80423** in the following tested applications.

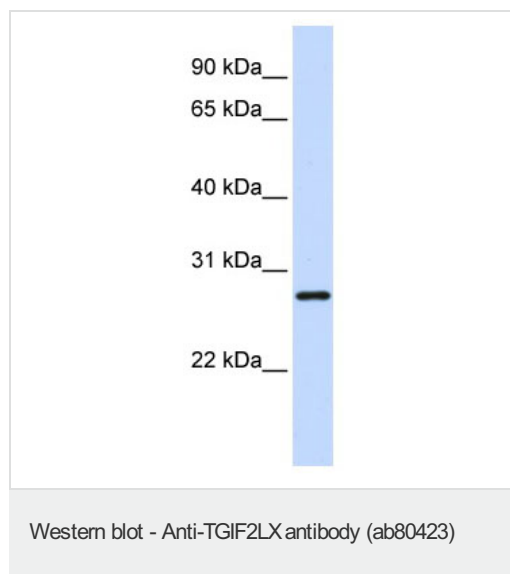
The application notes include recommended starting dilutions; optimal dilutions/concentrations should be determined by the end user.

Application	Abreviews	Notes
WB		Use a concentration of 1 µg/ml. Detects a band of approximately 27 kDa (predicted molecular weight: 27 kDa). Good results were obtained when blocked with 5% non-fat dry milk in 0.05% PBS-T.
ELISA		Use at an assay dependent concentration. ELISA titre using peptide based assay: 1/62500.

## Target

<b>Function</b>	May have a transcription role in testis.
<b>Tissue specificity</b>	Specifically expressed in adult testis.
<b>Sequence similarities</b>	Belongs to the TALE/TGIF homeobox family. Contains 1 homeobox DNA-binding domain.
<b>Cellular localization</b>	Nucleus.

## Images



Anti-TGIF2LX antibody (ab80423) at 1 µg/ml +  
HeLa cell lysate at 10 µg

### Secondary

HRP conjugated anti-Rabbit IgG at 1/50000  
dilution

**Predicted band size:** 27 kDa

**Observed band size:** 27 kDa

Gel concentration: 12%

**Please note:** All products are "FOR RESEARCH USE ONLY AND ARE NOT INTENDED FOR DIAGNOSTIC OR THERAPEUTIC USE"

## Our Abpromise to you: Quality guaranteed and expert technical support

- Replacement or refund for products not performing as stated on the datasheet
- Valid for 12 months from date of delivery
- Response to your inquiry within 24 hours
- We provide support in Chinese, English, French, German, Japanese and Spanish
- Extensive multi-media technical resources to help you
- We investigate all quality concerns to ensure our products perform to the highest standards

If the product does not perform as described on this datasheet, we will offer a refund or replacement. For full details of the Abpromise, please visit <http://www.abcam.com/abpromise> or contact our technical team.

## Terms and conditions

---

- Guarantee only valid for products bought direct from Abcam or one of our authorized distributors