

Product datasheet

Anti-TLR5 antibody ab1654

3 References 1 Image

Overview

Product name	Anti-TLR5 antibody
Description	Goat polyclonal to TLR5
Host species	Goat
Specificity	Peptide sequence is < 50 % identical to other human TLR receptors in this region.
Tested applications	Suitable for: WB, ELISA, ICC, IHC-P
Species reactivity	Reacts with: Human
Immunogen	Synthetic peptide: DLSKNQIRSLYLHPSFGKLNLSKSIDFSSNQ , corresponding to amino acids 151-181 of Human TLR5. Run BLAST with Run BLAST with
Positive control	Human spleen sections or human peripheral blood.
General notes	Receptors for the C - C chemokine family include CCR 1, CCR 2A, CCR 3, CCR 4, CCR 5 and the Duffy blood group antigen. The C C receptors are important in the function of T cell chemotaxis and migration of phagocytic cells to sites of inflammation.

Properties

Form	Liquid
Storage instructions	Shipped at 4°C. Upon delivery aliquot and store at -20°C or -80°C. Avoid repeated freeze / thaw cycles.
Storage buffer	PBS, 1mg/ml BSA, 0.1% sodium azide, pH7.2
Purity	Immunogen affinity purified
Primary antibody notes	Receptors for the C - C chemokine family include CCR 1, CCR 2A, CCR 3, CCR 4, CCR 5 and the Duffy blood group antigen. The C C receptors are important in the function of T cell chemotaxis and migration of phagocytic cells to sites of inflammation.
Clonality	Polyclonal
Isotype	IgG

Applications

Applications

Our [Abpromise guarantee](#) covers the use of **ab1654** in the following tested applications.

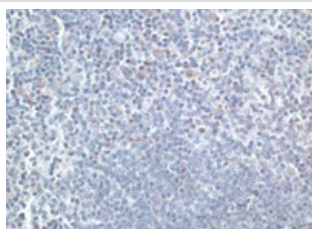
The application notes include recommended starting dilutions; optimal dilutions/concentrations should be determined by the end user.

Application	Abreviews	Notes
WB		1/100.
ELISA		1/75000.
ICC		1/500.
IHC-P		1/250.

Target

Function	Participates in the innate immune response to microbial agents. Mediates detection of bacterial flagellins. Acts via MYD88 and TRAF6, leading to NF-kappa-B activation, cytokine secretion and the inflammatory response.
Tissue specificity	Highly expressed in ovary and in peripheral blood leukocytes, especially in monocytes, less in CD11c+ immature dendritic cells. Also detected in prostate and testis.
Involvement in disease	Systemic lupus erythematosus 1
Sequence similarities	Belongs to the Toll-like receptor family. Contains 22 LRR (leucine-rich) repeats. Contains 1 LRRCT domain. Contains 1 TIR domain.
Post-translational modifications	Phosphorylated at Ser-805 by PKD/PRKD1; phosphorylation induces the production of inflammatory cytokines. Phosphorylated at Tyr-798 upon flagellin binding; required for signaling.
Cellular localization	Membrane.

Images



Immunohistochemistry with ab1654 on paraffin section of human spleen

Immunohistochemistry (Formalin/PFA-fixed paraffin-embedded sections) - Anti-TLR5 antibody (ab1654)

Please note: All products are "FOR RESEARCH USE ONLY AND ARE NOT INTENDED FOR DIAGNOSTIC OR THERAPEUTIC USE"

Our Abpromise to you: Quality guaranteed and expert technical support

- Replacement or refund for products not performing as stated on the datasheet
- Valid for 12 months from date of delivery
- Response to your inquiry within 24 hours

- We provide support in Chinese, English, French, German, Japanese and Spanish
- Extensive multi-media technical resources to help you
- We investigate all quality concerns to ensure our products perform to the highest standards

If the product does not perform as described on this datasheet, we will offer a refund or replacement. For full details of the Abpromise, please visit <http://www.abcam.com/abpromise> or contact our technical team.

Terms and conditions

- Guarantee only valid for products bought direct from Abcam or one of our authorized distributors