

Product datasheet

Anti-TOMM40 antibody ab99485

1 Image

Overview

| | |
|----------------------------|--|
| Product name | Anti-TOMM40 antibody |
| Description | Goat polyclonal to TOMM40 |
| Host species | Goat |
| Tested applications | Suitable for: WB |
| Species reactivity | Reacts with: Human Predicted to work with: Mouse, Rat, Cow, Dog, Pig, Xenopus laevis |
| Immunogen | Synthetic peptide: C-HTVALSTIGESNYH , corresponding to internal sequence amino acids 117-130 of Human TOMM40 (NP_006105.1). Run BLAST with Run BLAST with |
| Positive control | Human Brain (Cerebellum and Frontal Cortex) lysates. |
| General notes | Reported variants represent identical protein: NP_001122389.1, NP_001122388.1, NP_006105.1. |

Properties

| | |
|-------------------------------|---|
| Form | Liquid |
| Storage instructions | Shipped at 4°C. Upon delivery aliquot and store at -20°C. Avoid repeated freeze / thaw cycles. |
| Storage buffer | Preservative: 0.02% Sodium Azide Constituents: 0.5% BSA, Tris buffered saline, pH 7.3 |
| Purity | Immunogen affinity purified |
| Purification notes | ab99485 was purified from goat serum by ammonium sulphate precipitation followed by antigen affinity chromatography using the immunizing peptide. |
| Primary antibody notes | Reported variants represent identical protein: NP_001122389.1, NP_001122388.1, NP_006105.1. |
| Clonality | Polyclonal |
| Isotype | IgG |

Applications

Our [Abpromise guarantee](#) covers the use of **ab99485** in the following tested applications.

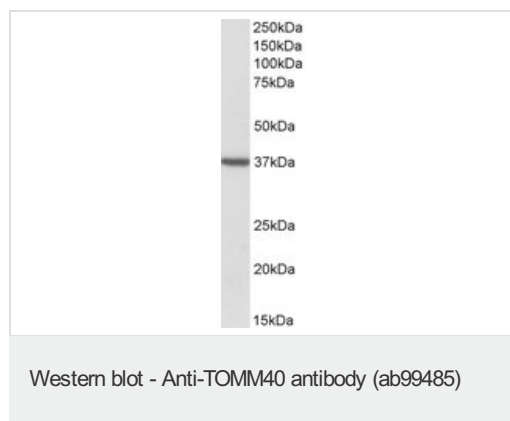
The application notes include recommended starting dilutions; optimal dilutions/concentrations should be determined by the end user.

| Application | Abreviews | Notes |
|-------------|-----------|--|
| WB | | Use a concentration of 1 - 3 µg/ml. Detects a band of approximately 37 kDa (predicted molecular weight: 38 kDa). |

Target

| | |
|------------------------------|---|
| Function | Channel-forming protein essential for import of protein precursors into mitochondria. |
| Sequence similarities | Belongs to the Tom40 family. |
| Cellular localization | Mitochondrion outer membrane. |

Images



Anti-TOMM40 antibody (ab99485) at 2 µg/ml
+ Human Frontal Cortex lysate in RIPA buffer
at 35 µg

Developed using the ECL technique.

Predicted band size: 38 kDa

Primary incubation was 1 hour.

Please note: All products are "FOR RESEARCH USE ONLY AND ARE NOT INTENDED FOR DIAGNOSTIC OR THERAPEUTIC USE"

Our Abpromise to you: Quality guaranteed and expert technical support

- Replacement or refund for products not performing as stated on the datasheet
- Valid for 12 months from date of delivery
- Response to your inquiry within 24 hours
- We provide support in Chinese, English, French, German, Japanese and Spanish
- Extensive multi-media technical resources to help you
- We investigate all quality concerns to ensure our products perform to the highest standards

If the product does not perform as described on this datasheet, we will offer a refund or replacement. For full details of the Abpromise, please visit <http://www.abcam.com/abpromise> or contact our technical team.

Terms and conditions

- Guarantee only valid for products bought direct from Abcam or one of our authorized distributors