


Product datasheet

Anti-TPD52L2 antibody ab113952

4 Images

Overview

Product name	Anti-TPD52L2 antibody
Description	Goat polyclonal to TPD52L2
Host species	Goat
Tested applications	Suitable for: WB, ELISA, IHC-P
Species reactivity	Reacts with: Human Predicted to work with: Cynomolgus monkey, Orangutan 
Immunogen	Synthetic peptide: SGDKPLSDPAP with a Cysteine residue linker, corresponding to C terminal amino acids 195-205 of Human TPD52L2 (NP_003279.2). Run BLAST with Run BLAST with
Positive control	Human brain cortex, spleen and tonsil tissues; Human breast cancer lysate.

Properties

Form	Liquid
Storage instructions	Shipped at 4°C. Store at -20°C.
Storage buffer	pH: 7.30 Preservative: 0.02% Sodium azide Constituents: 0.5% BSA, 99% Tris buffered saline
Purity	Protein G purified
Clonality	Polyclonal
Isotype	IgG

Applications

Our [Abpromise guarantee](#) covers the use of **ab113952** in the following tested applications.

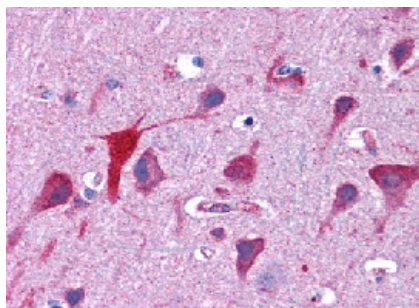
The application notes include recommended starting dilutions; optimal dilutions/concentrations should be determined by the end user.

Application	Abreviews	Notes
WB		Use a concentration of 0.1 - 0.3 µg/ml. Predicted molecular weight: 22 kDa.
ELISA		1/16000.
IHC-P		Use a concentration of 3.75 µg/ml.

Target

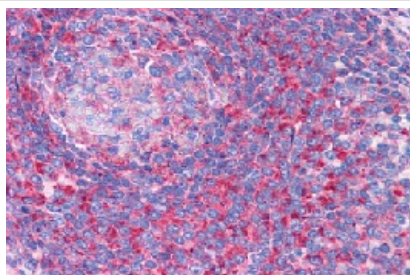
Sequence similarities Belongs to the TPD52 family.

Images



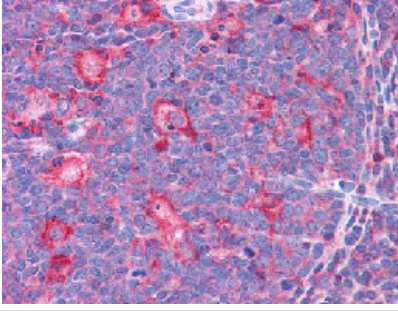
ab113952, at 3.75 µg/ml, staining TPD52L2 in Formalin-Fixed, Paraffin-Embedded Human brain cortex tissue by Immunohistochemistry.

Immunohistochemistry (Formalin/PFA-fixed paraffin-embedded sections) - Anti-TPD52L2 antibody (ab113952)



ab113952, at 3.75 µg/ml, staining TPD52L2 in Formalin-Fixed, Paraffin-Embedded Human spleen tissue by Immunohistochemistry.

Immunohistochemistry (Formalin/PFA-fixed paraffin-embedded sections) - Anti-TPD52L2 antibody (ab113952)



ab113952, at 3.75 µg/ml, staining TPD52L2 in Formalin-Fixed, Paraffin-Embedded Human tonsil tissue by Immunohistochemistry.

Immunohistochemistry (Formalin/PFA-fixed paraffin-embedded sections) - Anti-TPD52L2 antibody (ab113952)



Anti-TPD52L2 antibody (ab113952) at 0.1 µg/ml + Human breast cancer lysate (in RIPA buffer) at 35 µg

Developed using the ECL technique.

Predicted band size: 22 kDa

Western blot - Anti-TPD52L2 antibody (ab113952)

Please note: All products are "FOR RESEARCH USE ONLY AND ARE NOT INTENDED FOR DIAGNOSTIC OR THERAPEUTIC USE"

Our Abpromise to you: Quality guaranteed and expert technical support

- Replacement or refund for products not performing as stated on the datasheet
- Valid for 12 months from date of delivery
- Response to your inquiry within 24 hours
- We provide support in Chinese, English, French, German, Japanese and Spanish
- Extensive multi-media technical resources to help you
- We investigate all quality concerns to ensure our products perform to the highest standards

If the product does not perform as described on this datasheet, we will offer a refund or replacement. For full details of the Abpromise, please visit <http://www.abcam.com/abpromise> or contact our technical team.

Terms and conditions

- Guarantee only valid for products bought direct from Abcam or one of our authorized distributors