

## Product datasheet

# Anti-TPD52L2 antibody ab77337

1 Image

### Overview

<b>Product name</b>	Anti-TPD52L2 antibody
<b>Description</b>	Goat polyclonal to TPD52L2
<b>Specificity</b>	ab77337 is expected to recognise all reported isoforms (NP_955392.1; NP_955393.1; NP_955394.1; NP_955395.1; NP_003279.2; NP_955391.1).
<b>Tested applications</b>	<b>Suitable for:</b> WB, ELISA
<b>Species reactivity</b>	<b>Reacts with:</b> Human <b>Predicted to work with:</b> Cynomolgus monkey, Orangutan
<b>Immunogen</b>	Synthetic peptide: C-SGDKPLSDPAP , corresponding to C terminal amino acids 195-205 of Human TPD52L2 (NP_955392.1; NP_955393.1; NP_955394.1; NP_955395.1; NP_003279.2; NP_955391.1). <a href="#">Run BLAST with</a> <a href="#">Run BLAST with</a>
<b>Positive control</b>	Human Breast Cancer and human brain lysates.

### Properties

<b>Form</b>	Liquid
<b>Storage instructions</b>	Shipped at 4°C. Upon delivery aliquot and store at -20°C. Avoid repeated freeze / thaw cycles.
<b>Storage buffer</b>	Preservative: 0.02% Sodium Azide Constituents: 0.5% BSA, Tris buffered saline, pH 7.3
<b>Purity</b>	Immunogen affinity purified
<b>Purification notes</b>	ab77337 was purified from goat serum by ammonium sulphate precipitation followed by antigen affinity chromatography using the immunizing peptide.
<b>Clonality</b>	Polyclonal
<b>Isotype</b>	IgG

### Applications

Our [Abpromise guarantee](#) covers the use of **ab77337** in the following tested applications.

The application notes include recommended starting dilutions; optimal dilutions/concentrations should be determined by the end user.

Application	Abreviews	Notes
WB		
ELISA		

#### Application notes

ELISA: Use at an assay dependent dilution.  
Antibody detection limit dilution 1/16,000.

WB: Use at a concentration of 0.1 - 0.3 µg/ml. Detects a band of approximately 28 kDa.

Not yet tested in other applications.

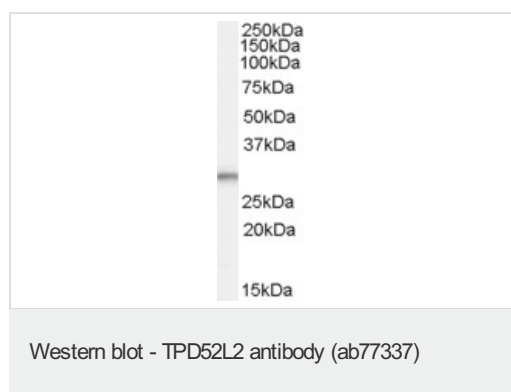
Optimal dilutions/concentrations should be determined by the end user.

#### Target

#### Sequence similarities

Belongs to the TPD52 family.

#### Images



Anti-TPD52L2 antibody (ab77337) at 0.1 µg/ml + Human Breast Cancer lysate (in RIPA buffer) at 35 µg  
Developed using the ECL technique

**Observed band size : 28 kDa**

**Please note:** All products are "FOR RESEARCH USE ONLY AND ARE NOT INTENDED FOR DIAGNOSTIC OR THERAPEUTIC USE"

#### Our Abpromise to you: Quality guaranteed and expert technical support

- Replacement or refund for products not performing as stated on the datasheet
- Valid for 12 months from date of delivery
- Response to your inquiry within 24 hours
- We provide support in Chinese, English, French, German, Japanese and Spanish
- Extensive multi-media technical resources to help you
- We investigate all quality concerns to ensure our products perform to the highest standards

If the product does not perform as described on this datasheet, we will offer a refund or replacement. For full details of the Abpromise, please visit <http://www.abcam.com/abpromise> or contact our technical team.

## Terms and conditions

---

- Guarantee only valid for products bought direct from Abcam or one of our authorized distributors