


Product datasheet

Anti-TRAPPC6B antibody ab75797

1 Image

Overview

Product name	Anti-TRAPPC6B antibody
Description	Rabbit polyclonal to TRAPPC6B
Tested applications	Suitable for: WB, ELISA
Species reactivity	Reacts with: Human Predicted to work with: Mouse, Rat, Rabbit, Goat, Horse, Chicken, Guinea pig, Cow, Cat, Dog, Saccharomyces cerevisiae, Zebrafish 
Immunogen	Synthetic peptide (Human)
Positive control	Hela cell lysate.

Properties

Form	Liquid
Storage instructions	Shipped at 4°C. Upon delivery aliquot and store at -20°C or -80°C. Avoid repeated freeze / thaw cycles.
Storage buffer	Preservative: None Constituents: 2% Sucrose, PBS
Purity	Immunogen affinity purified
Clonality	Polyclonal
Isotype	IgG

Applications

Our [Abpromise guarantee](#) covers the use of **ab75797** in the following tested applications.

The application notes include recommended starting dilutions; optimal dilutions/concentrations should be determined by the end user.

Application	Abreviews	Notes
WB		
ELISA		

Application notes ELISA: Use at an assay dependent dilution. Titre using peptide based assay: 1/1562500.

WB: Use at a concentration of 1 µg/ml. Predicted molecular weight: 18 kDa (isoform 1) or 15 kDa (isoform 2).

Not yet tested in other applications.

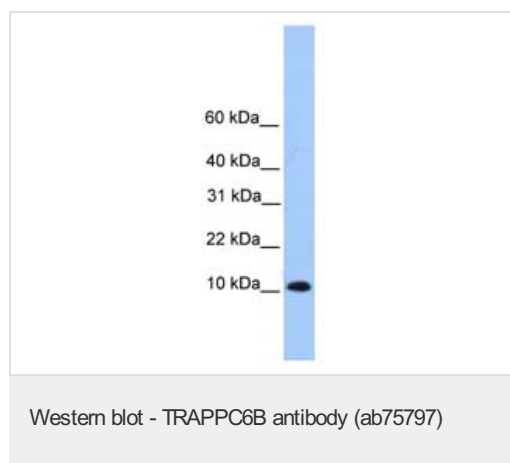
Optimal dilutions/concentrations should be determined by the end user.

Target

Relevance TRAPPC6B is a component of TRAPP complexes, which are tethering complexes involved in vesicle transport. There are two named human isoforms, produced by alternative splicing.

Cellular localization Golgi apparatus, cis-Golgi network. Endoplasmic reticulum.

Images



Anti-TRAPPC6B antibody (ab75797) at 1 µg/ml (in 5% skim milk / PBS buffer) + Hela cell lysate at 10 µg

Secondary

HRP conjugated anti-Rabbit IgG at 1/50000 dilution

Predicted band size : 15 kDa

Observed band size : 12 kDa

Please note: All products are "FOR RESEARCH USE ONLY AND ARE NOT INTENDED FOR DIAGNOSTIC OR THERAPEUTIC USE"

Our Abpromise to you: Quality guaranteed and expert technical support

- Replacement or refund for products not performing as stated on the datasheet
- Valid for 12 months from date of delivery
- Response to your inquiry within 24 hours
- We provide support in Chinese, English, French, German, Japanese and Spanish
- Extensive multi-media technical resources to help you
- We investigate all quality concerns to ensure our products perform to the highest standards

If the product does not perform as described on this datasheet, we will offer a refund or replacement. For full details of the Abpromise, please visit <http://www.abcam.com/abpromise> or contact our technical team.

Terms and conditions

- Guarantee only valid for products bought direct from Abcam or one of our authorized distributors