

Product datasheet

Anti-TREM1 antibody ab104413

[2 References](#) [2 Images](#)

Overview

| | |
|----------------------------|--|
| Product name | Anti-TREM1 antibody |
| Description | Rabbit polyclonal to TREM1 |
| Host species | Rabbit |
| Tested applications | Suitable for: WB |
| Species reactivity | Reacts with: Mouse, Human |
| Immunogen | Full length Human TREM1 (NP_061113.1, amino acids 1-234). |
| Positive control | Mouse kidney tissue lysate; TREM1 transfected 293T cell lysate |

Properties

| | |
|-----------------------------|--|
| Form | Liquid |
| Storage instructions | Shipped at 4°C. Upon delivery aliquot. Store at -20°C or -80°C. Avoid freeze / thaw cycle. |
| Storage buffer | Preservative: None Constituents: 1X PBS, pH 7.2 |
| Purity | Protein A purified |
| Clonality | Polyclonal |
| Isotype | IgG |

Applications

Our [Abpromise guarantee](#) covers the use of **ab104413** in the following tested applications.

The application notes include recommended starting dilutions; optimal dilutions/concentrations should be determined by the end user.

| Application | Abreviews | Notes |
|-------------|-----------|---|
| WB | | Use a concentration of 1 µg/ml. Predicted molecular weight: 26 kDa. |

Target

Function Stimulates neutrophil and monocyte-mediated inflammatory responses. Triggers release of pro-

inflammatory chemokines and cytokines, as well as increased surface expression of cell activation markers. Amplifier of inflammatory responses that are triggered by bacterial and fungal infections and is a crucial mediator of septic shock.

Tissue specificity

Highly expressed in adult liver, lung and spleen than in corresponding fetal tissue. Also expressed in the lymph node, placenta, spinal cord and heart tissues. Expression is more elevated in peripheral blood leukocytes than in the bone marrow and in normal cells than malignant cells. Expressed at low levels in the early development of the hematopoietic system and in the promonocytic stage and at high levels in mature monocytes. Strongly expressed in acute inflammatory lesions caused by bacteria and fungi. Isoform 2 was detected in the lung, liver and mature monocytes.

Sequence similarities

Contains 1 Ig-like V-type (immunoglobulin-like) domain.

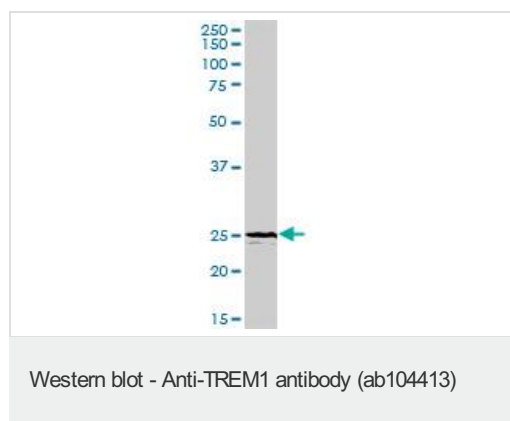
Post-translational modifications

Glycosylated.

Cellular localization

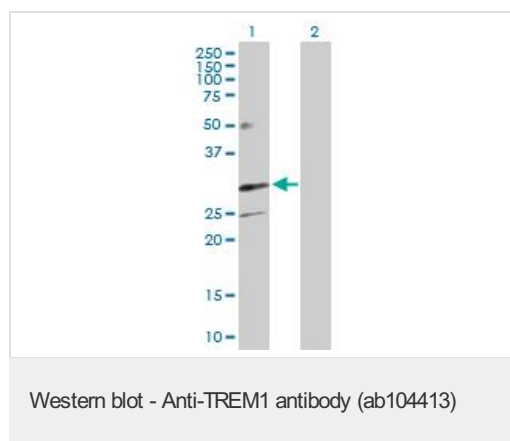
Secreted and Cell membrane.

Images



Anti-TREM1 antibody (ab104413) at 1 μ g/ml +
Mouse kidney tissue lysate at 50 μ g

Predicted band size: 26 kDa



All lanes : Anti-TREM1 antibody (ab104413)
at 1 μ g/ml

Lane 1 : TREM1 transfected 293T cell lysate

Lane 2 : Non-transfected 293T cell lysate

Lysates/proteins at 25 μ g per lane.

Predicted band size: 26 kDa

Please note: All products are "FOR RESEARCH USE ONLY AND ARE NOT INTENDED FOR DIAGNOSTIC OR THERAPEUTIC USE"

Our Abpromise to you: Quality guaranteed and expert technical support

- Replacement or refund for products not performing as stated on the datasheet

- Valid for 12 months from date of delivery
- Response to your inquiry within 24 hours

- We provide support in Chinese, English, French, German, Japanese and Spanish
- Extensive multi-media technical resources to help you
- We investigate all quality concerns to ensure our products perform to the highest standards

If the product does not perform as described on this datasheet, we will offer a refund or replacement. For full details of the Abpromise, please visit <http://www.abcam.com/abpromise> or contact our technical team.

Terms and conditions

- Guarantee only valid for products bought direct from Abcam or one of our authorized distributors