


Product datasheet

Anti-TRIP6 antibody ab12329

1 Image

Overview

<b>Product name</b>	Anti-TRIP6 antibody
<b>Description</b>	Rabbit polyclonal to TRIP6
<b>Host species</b>	Rabbit
<b>Tested applications</b>	<b>Suitable for:</b> WB
<b>Species reactivity</b>	<b>Reacts with:</b> Human <b>Predicted to work with:</b> Mouse, Gorilla 
<b>Immunogen</b>	A synthetic peptide which represented a portion of human TRIP6 encoded within exons 3 and 4.
<b>Positive control</b>	<a href="#">Purchase matching WB positive control: Recombinant Human TRIP6 protein &gt;</a>
<b>General notes</b>	Centrifuge tube to remove product from lid.

Properties

<b>Form</b>	Liquid
<b>Storage instructions</b>	Shipped at 4°C. Upon delivery aliquot and store at -20°C. Avoid freeze / thaw cycles.
<b>Storage buffer</b>	Preservative: 0.1% Sodium Azide Constituents: 8mM PBS, 60mM Citrate, 150mM Tris, pH 7-8
<b>Purity</b>	Immunogen affinity purified
<b>Clonality</b>	Polyclonal
<b>Isotype</b>	IgG

Applications

Our [Abpromise guarantee](#) covers the use of **ab12329** in the following tested applications.

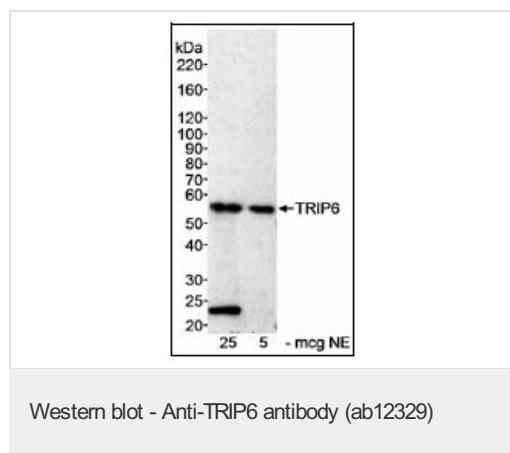
The application notes include recommended starting dilutions; optimal dilutions/concentrations should be determined by the end user.

Application	Abreviews	Notes
WB		1/1000 - 1/10000. Predicted molecular weight: 57.1 kDa.

## Target

<b>Function</b>	Relays signals from the cell surface to the nucleus to weaken adherens junction and promote actin cytoskeleton reorganization and cell invasiveness. Involved in lysophosphatidic acid-induced cell adhesion and migration. Acts as a transcriptional coactivator for NF-kappa-B and JUN, and mediates the transrepression of these transcription factors induced by glucocorticoid receptor.
<b>Tissue specificity</b>	Abundantly expressed in kidney, liver and lung. Lower levels in heart, placenta and pancreas. Expressed in colonic epithelial cells. Up-regulated in colonic tumors.
<b>Sequence similarities</b>	Belongs to the zyxin/ajuba family. Contains 3 LIM zinc-binding domains.
<b>Domain</b>	The LIM zinc-binding domains mediate interaction with LPAR2 and with S.typhimurium protein sseI.
<b>Post-translational modifications</b>	Phosphorylation at Tyr-55 by SRC is required for enhancement of lysophosphatidic acid-induced cell migration. Tyr-55 is dephosphorylated by PTPN13.
<b>Cellular localization</b>	Cytoplasm > cytoskeleton. Cell junction > focal adhesion. Nucleus. Cytoplasm. Shuttles between nucleus and cytoplasm.

## Images



*Samples:* Nuclear extract (NE) from HeLa cells. *Antibody:* Affinity purified rabbit anti-TRIP6 antibody (ab12329) used at 0.3 µg/ml. *Detection:* Chemiluminescence with an exposure time of 30 minutes.

*Samples:* Nuclear extract (NE) from HeLa cells. *Antibody:* Affinity purified rabbit anti-TRIP6 antibody (ab12329) used at 0.3 µg/ml. *Detection:* Chemiluminescence with an exposure time of 30 minutes.

**Please note:** All products are "FOR RESEARCH USE ONLY AND ARE NOT INTENDED FOR DIAGNOSTIC OR THERAPEUTIC USE"

## Our Abpromise to you: Quality guaranteed and expert technical support

- Replacement or refund for products not performing as stated on the datasheet
- Valid for 12 months from date of delivery
- Response to your inquiry within 24 hours
- We provide support in Chinese, English, French, German, Japanese and Spanish
- Extensive multi-media technical resources to help you
- We investigate all quality concerns to ensure our products perform to the highest standards

If the product does not perform as described on this datasheet, we will offer a refund or replacement. For full details of the Abpromise, please visit <http://www.abcam.com/abpromise> or contact our technical team.

## **Terms and conditions**

---

- Guarantee only valid for products bought direct from Abcam or one of our authorized distributors