

Product datasheet

Anti-UBE2E3 antibody - N-terminal ab71640

[2 Images](#)

Overview

Product name	Anti-UBE2E3 antibody - N-terminal
Description	Rabbit polyclonal to UBE2E3 - N-terminal
Host species	Rabbit
Tested applications	Suitable for: ELISA, IHC-P, WB
Species reactivity	Reacts with: Mouse, Human
Immunogen	Synthetic peptide from the N-terminal region of human UBE2E3 conjugated to KLH
Positive control	Mouse liver tissue lysate; Paraffin embedded human hepatocarcinoma tissue.

Properties

Form	Liquid
Storage instructions	Shipped at 4°C. Upon delivery aliquot and store at -20°C. Avoid freeze / thaw cycles.
Storage buffer	Preservative: 0.09% Sodium Azide Constituents: PBS
Purity	Protein G purified
Clonality	Polyclonal
Isotype	IgG

Applications

Our [Abpromise guarantee](#) covers the use of **ab71640** in the following tested applications.

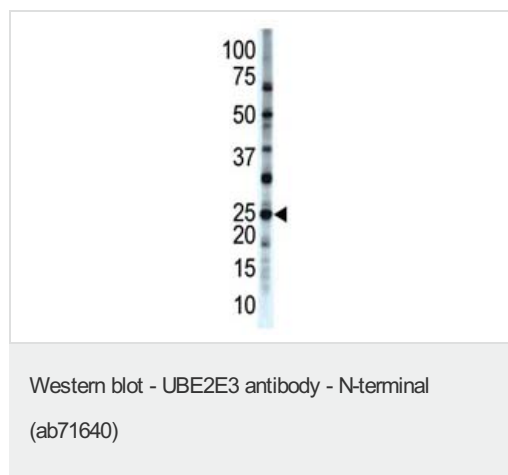
The application notes include recommended starting dilutions; optimal dilutions/concentrations should be determined by the end user.

Application	Abreviews	Notes
ELISA		1/1000.
IHC-P		1/50 - 1/100.
WB		1/100 - 1/500. Detects a band of approximately 23 kDa (predicted molecular weight: 23 kDa).

Target

Function	Accepts ubiquitin from the E1 complex and catalyzes its covalent attachment to other proteins. In vitro catalyzes 'Lys-11'- and 'Lys-48'-, as well as 'Lys-63'-linked polyubiquitination. Participates in the regulation of transepithelial sodium transport in renal cells. May be involved in cell growth arrest.
Tissue specificity	Ubiquitously expressed at low levels. Highly expressed in skeletal muscle.
Pathway	Protein modification; protein ubiquitination.
Sequence similarities	Belongs to the ubiquitin-conjugating enzyme family.
Cellular localization	Nucleus. Cytoplasm. Shuttles between the nucleus and cytoplasm in a IPO11-dependent manner.

Images

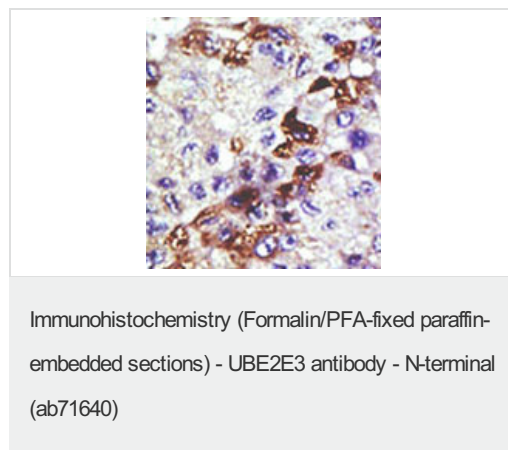


Anti-UBE2E3 antibody - N-terminal (ab71640)
at 1/100 dilution + mouse liver tissue lysate at
12.5 µg

Predicted band size: 23 kDa

Observed band size: 23 kDa

Additional bands at: 33 kDa, 50 kDa, 70 kDa. We are unsure as to the identity of these extra bands.



ab71640 at 1/50 dilution, staining UBE2E3 in human hepatocarcinoma by Immunohistochemistry, Formalin-fixed, Paraffin-embedded tissue, followed by peroxidase-conjugated secondary antibody and AEC staining.

Please note: All products are "FOR RESEARCH USE ONLY AND ARE NOT INTENDED FOR DIAGNOSTIC OR THERAPEUTIC USE"

Our Abpromise to you: Quality guaranteed and expert technical support

- Replacement or refund for products not performing as stated on the datasheet
- Valid for 12 months from date of delivery

- Response to your inquiry within 24 hours
- We provide support in Chinese, English, French, German, Japanese and Spanish
- Extensive multi-media technical resources to help you
- We investigate all quality concerns to ensure our products perform to the highest standards

If the product does not perform as described on this datasheet, we will offer a refund or replacement. For full details of the Abpromise, please visit <http://www.abcam.com/abpromise> or contact our technical team.

Terms and conditions

- Guarantee only valid for products bought direct from Abcam or one of our authorized distributors