

Product datasheet

Anti-UBE2M antibody [EPR5333] ab109507

Recombinant RabMAb

[2 References](#) [4 Images](#)

Overview

Product name	Anti-UBE2M antibody [EPR5333]
Description	Rabbit monoclonal [EPR5333] to UBE2M
Host species	Rabbit
Tested applications	Suitable for: WB, IP, IHC-P, ICC, Flow Cyt
Species reactivity	Reacts with: Mouse, Rat, Human
Immunogen	Synthetic peptide within Human UBE2M aa 150-250 (C terminal). The exact sequence is proprietary.
Positive control	293T and Ramos cell lysates, Human colonic adenocarcinoma and Human lung carcinoma tissues

General notes

Our RabMAb[®] technology is a patented hybridoma-based technology for making rabbit monoclonal antibodies. For details on our patents, please refer to [RabMAb[®] patents](#)

This product is a recombinant rabbit monoclonal antibody.

Properties

Form	Liquid
Storage instructions	Shipped at 4°C. Store at -20°C. Stable for 12 months at -20°C.
Storage buffer	PBS 49%, Sodium azide 0.01%, Glycerol 50%, BSA 0.05%
Purity	Tissue culture supernatant
Clonality	Monoclonal
Clone number	EPR5333
Isotype	IgG

Applications

Our [Abpromise guarantee](#) covers the use of **ab109507** in the following tested applications.

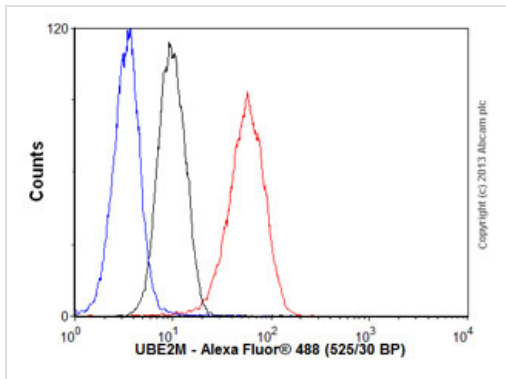
The application notes include recommended starting dilutions; optimal dilutions/concentrations should be determined by the end user.

Application	Abreviews	Notes
WB		1/10000 - 1/50000. Detects a band of approximately 20 kDa (predicted molecular weight: 21 kDa).
IP		1/10 - 1/100.
IHC-P		1/100 - 1/250. Perform heat mediated antigen retrieval with citrate buffer pH 6 before commencing with IHC staining protocol.
ICC		1/500 - 1/1000.
Flow Cyt		1/100 - 1/1000. ab172730 - Rabbit monoclonal IgG, is suitable for use as an isotype control with this antibody.

Target

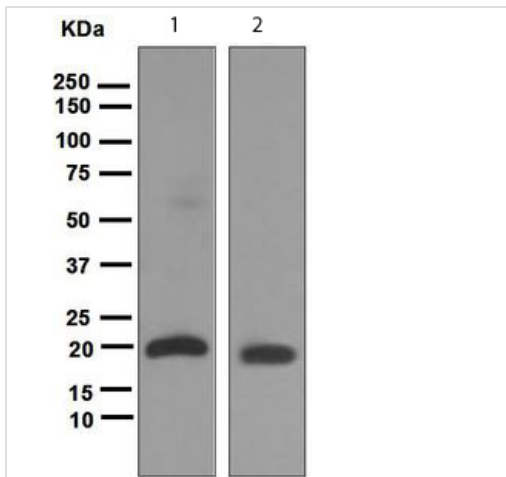
Function	Accepts the ubiquitin-like protein NEDD8 from the UBA3-NAE1 E1 complex and catalyzes its covalent attachment to other proteins. The specific interaction with the E3 ubiquitin ligase RBX1, but not RBX2, suggests that the RBX1-UBE2M complex neddylates specific target proteins, such as CUL1, CUL2, CUL3 and CUL4. Involved in cell proliferation.
Pathway	Protein modification; protein neddylation.
Sequence similarities	Belongs to the ubiquitin-conjugating enzyme family. UBC12 subfamily.
Domain	Both the N-terminal docking peptide and the catalytic core domain must bind the UBA3-NAE1 complex simultaneously for optimal transfer of NEDD8.

Images



Flow Cytometry - Anti-UBE2M antibody [EPR5333]
(ab109507)

Overlay histogram showing Ramos cells stained with ab109507 (red line). The cells were fixed with 4% paraformaldehyde (10 min) and then permeabilized with 0.1% PBS-Tween for 20 min. The cells were then incubated in 1x PBS / 10% normal goat serum / 0.3M glycine to block non-specific protein-protein interactions followed by the antibody (ab109507, 1/1000 dilution) for 30 min at 22°C. The secondary antibody used was Alexa Fluor® 488 goat anti-rabbit IgG (H&L) (ab150077) at 1/2000 dilution for 30 min at 22°C. Isotype control antibody (black line) was rabbit IgG (monoclonal) (0.1µg/1x10⁶ cells) used under the same conditions. Unlabelled sample (blue line) was also used as a control. Acquisition of >5,000 events were collected using a 20mW Argon ion laser (488nm) and 525/30 bandpass filter. This antibody gave a positive signal in Ramos cells fixed with 80% methanol (5 min)/permeabilized with 0.1% PBS-Tween for 20 min used under the same conditions.



Western blot - Anti-UBE2M antibody [EPR5333]
(ab109507)

All lanes : Anti-UBE2M antibody [EPR5333]
(ab109507) at 1/10000 dilution

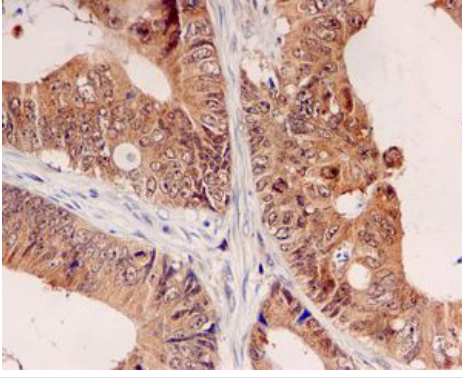
Lane 1 : 293T cell lysate

Lane 2 : Ramos cell lysate

Lysates/proteins at 10 µg per lane.

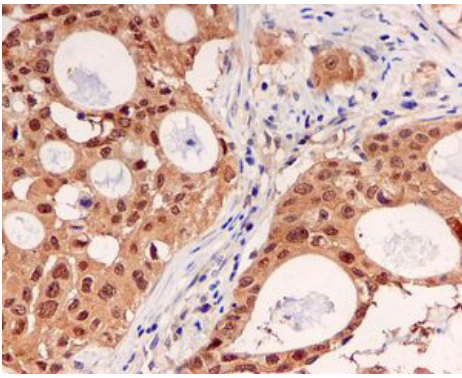
Predicted band size: 21 kDa

Observed band size: 20 kDa



Immunohistochemical analysis of paraffin-embedded human colonic adenocarcinoma tissue using ab109507 at a dilution of 1/100.

Immunohistochemistry (Formalin/PFA-fixed paraffin-embedded sections) - Anti-UBE2M antibody [EPR5333] (ab109507)



Immunohistochemical analysis of paraffin-embedded Human lung carcinoma tissue using ab109507 at a dilution of 1/100.

Immunohistochemistry (Formalin/PFA-fixed paraffin-embedded sections) - Anti-UBE2M antibody [EPR5333] (ab109507)

Please note: All products are "FOR RESEARCH USE ONLY AND ARE NOT INTENDED FOR DIAGNOSTIC OR THERAPEUTIC USE"

Our Abpromise to you: Quality guaranteed and expert technical support

- Replacement or refund for products not performing as stated on the datasheet
- Valid for 12 months from date of delivery
- Response to your inquiry within 24 hours
- We provide support in Chinese, English, French, German, Japanese and Spanish
- Extensive multi-media technical resources to help you
- We investigate all quality concerns to ensure our products perform to the highest standards

If the product does not perform as described on this datasheet, we will offer a refund or replacement. For full details of the Abpromise, please visit <http://www.abcam.com/abpromise> or contact our technical team.

Terms and conditions

- Guarantee only valid for products bought direct from Abcam or one of our authorized distributors