

Product datasheet

Anti-UQCRFS1 antibody ab81810

1 Image

Overview

<b>Product name</b>	Anti-UQCRFS1 antibody
<b>Description</b>	Rabbit polyclonal to UQCRFS1
<b>Tested applications</b>	<b>Suitable for:</b> WB
<b>Species reactivity</b>	<b>Reacts with:</b> Arabidopsis thaliana
<b>Immunogen</b>	Synthetic peptide: CHGSQYNAQGRVVR , corresponding to amino acids 177-190 of Arabidopsis thaliana UQCRFS1. The peptide is conservative among most higher plant species. <a href="#">Run BLAST with</a> <a href="#">Run BLAST with</a>
<b>Positive control</b>	Arabidopsis and tobacco chloroplast. Synechocystis thylakoid membrane proteins.
<b>General notes</b>	Also reacts with higher plants, Synechocystis sp.

Properties

<b>Form</b>	Liquid
<b>Storage instructions</b>	Shipped at 4°C. Upon delivery aliquot and store at -20°C. Avoid freeze / thaw cycles.
<b>Storage buffer</b>	Preservative: 0.01% Sodium Azide Constituents: Whole serum
<b>Purity</b>	Whole antiserum
<b>Clonality</b>	Polyclonal
<b>Isotype</b>	IgG

Applications

Our [Abpromise guarantee](#) covers the use of **ab81810** in the following tested applications.

The application notes include recommended starting dilutions; optimal dilutions/concentrations should be determined by the end user.

Application	Abreviews	Notes
WB		1/500 - 1/1000. Predicted molecular weight: 24 kDa.

## Target

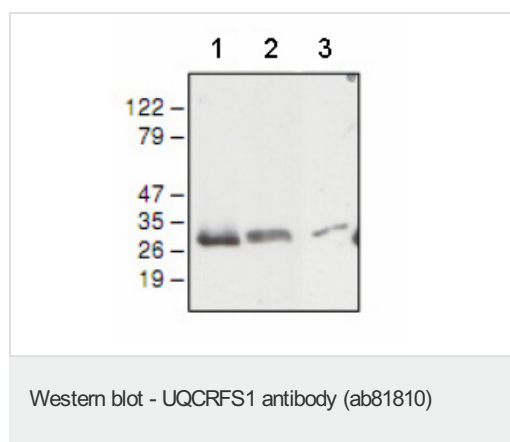
---

<b>Function</b>	Component of the ubiquinol-cytochrome c reductase complex (complex III or cytochrome b-c1 complex), which is a respiratory chain that generates an electrochemical potential coupled to ATP synthesis. The transit peptide of the Rieske protein seems to form part of the bc1 complex and is considered to be the subunit 11/IX of that complex.
<b>Sequence similarities</b>	Contains 1 Rieske domain.
<b>Cellular localization</b>	Mitochondrion inner membrane.

---

## Images

---



**All lanes :** Anti-UQCRFS1 antibody (ab81810) at 1/500 dilution

**Lane 1 :** Arabidopsis chloroplast

**Lane 2 :** Tobacco chloroplast

**Lane 3 :** Synechocystis thylakoid membrane proteins

Developed using the ECL technique

**Predicted band size :** 24 kDa

**Observed band size :** 30 kDa

**Please note:** All products are "FOR RESEARCH USE ONLY AND ARE NOT INTENDED FOR DIAGNOSTIC OR THERAPEUTIC USE"

## Our Abpromise to you: Quality guaranteed and expert technical support

---

- Replacement or refund for products not performing as stated on the datasheet
- Valid for 12 months from date of delivery
- Response to your inquiry within 24 hours
- We provide support in Chinese, English, French, German, Japanese and Spanish
- Extensive multi-media technical resources to help you
- We investigate all quality concerns to ensure our products perform to the highest standards

If the product does not perform as described on this datasheet, we will offer a refund or replacement. For full details of the Abpromise, please visit <http://www.abcam.com/abpromise> or contact our technical team.

## Terms and conditions

---

- Guarantee only valid for products bought direct from Abcam or one of our authorized distributors