


Product datasheet

Anti-UTP6 antibody ab125198

1 Image

Overview

<b>Product name</b>	Anti-UTP6 antibody
<b>Description</b>	Rabbit polyclonal to UTP6
<b>Host species</b>	Rabbit
<b>Tested applications</b>	<b>Suitable for:</b> IHC-P
<b>Species reactivity</b>	<b>Reacts with:</b> Human <b>Predicted to work with:</b> Rhesus monkey, Gorilla, Orangutan 
<b>Immunogen</b>	Synthetic peptide, corresponding to a region within amino acids 565-597 of Human UTP6 (NP_060898.2).
<b>Positive control</b>	Human Breast Carcinoma and Prostate Carcinoma.

Properties

<b>Form</b>	Liquid
<b>Storage instructions</b>	Shipped at 4°C. Upon delivery aliquot and store at -20°C. Avoid freeze / thaw cycles.
<b>Storage buffer</b>	Preservative: 0.09% Sodium azide Constituents: 99% Tris buffered saline, 0.1% BSA
<b>Purity</b>	Immunogen affinity purified
<b>Purification notes</b>	ab125198 was affinity purified using an epitope specific to UTP6 immobilized on a solid support.
<b>Clonality</b>	Polyclonal
<b>Isotype</b>	IgG

Applications

Our [Abpromise guarantee](#) covers the use of **ab125198** in the following tested applications.

The application notes include recommended starting dilutions; optimal dilutions/concentrations should be determined by the end user.

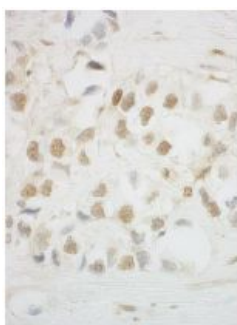
Application	Abreviews	Notes
-------------	-----------	-------

Application	Abreviews	Notes
IHC-P		1/100 - 1/500. Perform heat mediated antigen retrieval with citrate buffer pH 6 before commencing with IHC staining protocol. Likely to work with frozen sections

## Target

<b>Function</b>	Involved in nucleolar processing of pre-18S ribosomal RNA.
<b>Sequence similarities</b>	Belongs to the UTP6 family. Contains 5 HAT repeats.
<b>Cellular localization</b>	Nucleus > nucleolus.

## Images



ab125198 at 1/500 dilution staining UTP6 in Formalin-Fixed, Paraffin-Embedded Human breast carcinoma tissue by Immunohistochemistry. Detection utilised DAB.

Immunohistochemistry (Formalin/PFA-fixed paraffin-embedded sections) - Anti-UTP6 antibody (ab125198)

**Please note:** All products are "FOR RESEARCH USE ONLY AND ARE NOT INTENDED FOR DIAGNOSTIC OR THERAPEUTIC USE"

## Our Abpromise to you: Quality guaranteed and expert technical support

- Replacement or refund for products not performing as stated on the datasheet
- Valid for 12 months from date of delivery
- Response to your inquiry within 24 hours
- We provide support in Chinese, English, French, German, Japanese and Spanish
- Extensive multi-media technical resources to help you
- We investigate all quality concerns to ensure our products perform to the highest standards

If the product does not perform as described on this datasheet, we will offer a refund or replacement. For full details of the Abpromise, please visit <http://www.abcam.com/abpromise> or contact our technical team.

## Terms and conditions

- Guarantee only valid for products bought direct from Abcam or one of our authorized distributors