

Product datasheet

Anti-WDR45L antibody ab116087

1 Image

Overview

Product name	Anti-WDR45L antibody
Description	Rabbit polyclonal to WDR45L
Host species	Rabbit
Tested applications	Suitable for: WB
Species reactivity	Reacts with: Rat Predicted to work with: Mouse, Rabbit, Horse, Chicken, Guinea pig, Cow, Cat, Dog, Human, Zebrafish
Immunogen	Synthetic peptide corresponding to a region within N terminal amino acids 65 - 114 (YLALVGGGKKPKYPPNKVMMWDDLKKKTVIEIEFSTEVKAVKLRDRIV) of Rat WDR45L (NP_001034676). Run BLAST with Run BLAST with
Positive control	Rat liver lysate

Properties

Form	Liquid
Storage instructions	Shipped at 4°C. Upon delivery aliquot and store at -20°C. Avoid repeated freeze / thaw cycles.
Storage buffer	Constituents: 97% PBS, 2% Sucrose
Purity	Immunogen affinity purified
Clonality	Polyclonal
Isotype	IgG

Applications

Our [Abpromise guarantee](#) covers the use of **ab116087** in the following tested applications.

The application notes include recommended starting dilutions; optimal dilutions/concentrations should be determined by the end user.

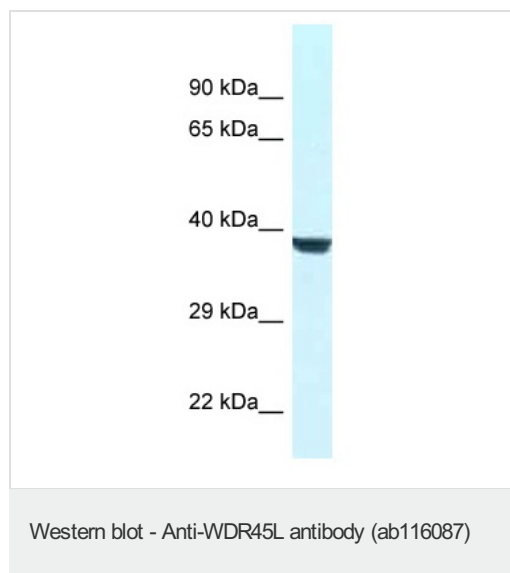
Application	Abreviews	Notes
-------------	-----------	-------

Application	Abreviews	Notes
WB		Use a concentration of 1 µg/ml. Predicted molecular weight: 38 kDa. Good results were obtained when blocked with 5% non-fat dry milk in 0.05% PBS-T.

Target

Tissue specificity	Ubiquitously expressed. Highly expressed in heart, skeletal muscle and pancreas. Up-regulated in a variety of tumor tissues including ovarian and uterine cancers.
Sequence similarities	Belongs to the WD repeat SVP1 family. Contains 2 WD repeats.

Images



Anti-WDR45L antibody (ab116087) at 1 µg/ml
+ Rat liver lysate at 10 µg

Predicted band size: 38 kDa

Gel concentration: 12%

Please note: All products are "FOR RESEARCH USE ONLY AND ARE NOT INTENDED FOR DIAGNOSTIC OR THERAPEUTIC USE"

Our Abpromise to you: Quality guaranteed and expert technical support

- Replacement or refund for products not performing as stated on the datasheet
- Valid for 12 months from date of delivery
- Response to your inquiry within 24 hours
- We provide support in Chinese, English, French, German, Japanese and Spanish
- Extensive multi-media technical resources to help you
- We investigate all quality concerns to ensure our products perform to the highest standards

If the product does not perform as described on this datasheet, we will offer a refund or replacement. For full details of the Abpromise, please visit <http://www.abcam.com/abpromise> or contact our technical team.

Terms and conditions

- Guarantee only valid for products bought direct from Abcam or one of our authorized distributors