

## Product datasheet

# Anti-XPA antibody ab84780

★★★★☆ 1 Abreviews 3 Images

### Overview

<b>Product name</b>	Anti-XPA antibody
<b>Description</b>	Rabbit polyclonal to XPA
<b>Tested applications</b>	<b>Suitable for:</b> IHC-P
<b>Species reactivity</b>	<b>Reacts with:</b> Mouse, Human <b>Predicted to work with:</b> Rhesus monkey, Gorilla, Elephant
<b>Immunogen</b>	Synthetic peptide, corresponding to a region between residue 1 and 50 of human XPA (NP_000371.1).
<b>Positive control</b>	Human controls: Breast Carcinoma, Colon Carcinoma, Ovarian Carcinoma, Prostate Carcinoma, Stomach Adenocarcinoma, Testicular Seminoma Mouse controls: Teratoma

### Properties

<b>Form</b>	Liquid
<b>Storage instructions</b>	Shipped at 4°C. Upon delivery aliquot and store at -20°C. Avoid freeze / thaw cycles.
<b>Storage buffer</b>	Preservative: 0.09% Sodium Azide Constituents: 0.1% BSA, Tris buffered saline
<b>Purity</b>	Immunogen affinity purified
<b>Purification notes</b>	ab84780 was affinity purified using an epitope specific to XPA immobilized on solid support.
<b>Clonality</b>	Polyclonal
<b>Isotype</b>	IgG

### Applications

Our [Abpromise guarantee](#) covers the use of **ab84780** in the following tested applications.

The application notes include recommended starting dilutions; optimal dilutions/concentrations should be determined by the end user.

Application	Abreviews	Notes
IHC-P	★★★★☆	

**Application notes** IHC-P: 1/100 - 1/500. Epitope exposure is recommended. Epitope exposure with citrate buffer

will enhance staining.

Likely to work with frozen sections.

Not yet tested in other applications.

Optimal dilutions/concentrations should be determined by the end user.

## Target

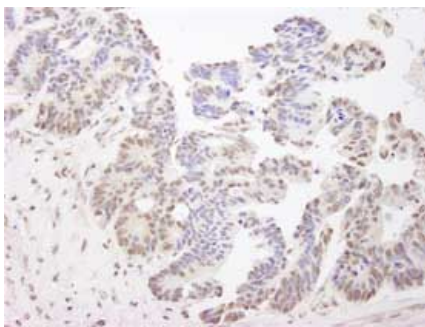
---

<b>Function</b>	Involved in DNA excision repair. Initiates repair by binding to damaged sites with various affinities, depending on the photoproduct and the transcriptional state of the region. Required for UV-induced CHK1 phosphorylation and the recruitment of CEP164 to cyclobutane pyrimidine dimers (CPD), sites of DNA damage after UV irradiation.
<b>Tissue specificity</b>	Expressed in various cell lines and in skin fibroblasts.
<b>Involvement in disease</b>	Defects in XPA are a cause of xeroderma pigmentosum complementation group A (XP-A) [MIM:278700]; also known as xeroderma pigmentosum type 1 (XP1). XP-A is a rare human autosomal recessive disease characterized by solar sensitivity, high predisposition for developing cancers on areas exposed to sunlight and, in some cases, neurological abnormalities. Group A patients show the most severe skin symptoms and progressive neurological disorders.
<b>Sequence similarities</b>	Belongs to the XPA family.
<b>Post-translational modifications</b>	Phosphorylated upon DNA damage, probably by ATM or ATR. Ubiquitinated by HERC2 leading to degradation by the proteasome.
<b>Cellular localization</b>	Nucleus.

---

## Images

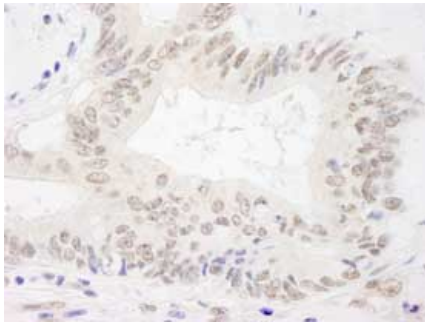
---



ab84780, at a 1/500 dilution, staining XPA in formalin fixed, paraffin embedded human ovarian tumor by Immunohistochemistry using DAB staining.

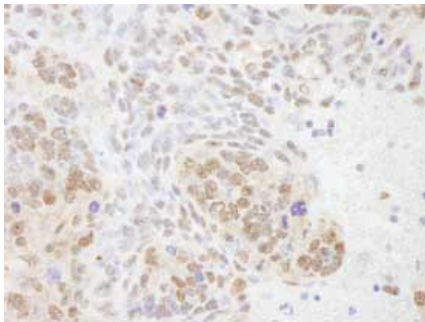
Immunohistochemistry (Formalin/PFA-fixed paraffin-embedded sections) - XPA antibody (ab84780)

---



Immunohistochemistry (Formalin/PFA-fixed paraffin-embedded sections) - XPA antibody (ab84780)

ab84780, at a 1/500 dilution, staining XPA in formalin fixed, paraffin embedded human colon carcinoma by Immunohistochemistry using DAB staining.



Immunohistochemistry (Formalin/PFA-fixed paraffin-embedded sections) - XPA antibody (ab84780)

ab84780, at a 1/100 dilution, staining XPA in formalin fixed, paraffin embedded mouse teratoma by Immunohistochemistry using DAB staining.

**Please note:** All products are "FOR RESEARCH USE ONLY AND ARE NOT INTENDED FOR DIAGNOSTIC OR THERAPEUTIC USE"

### Our Abpromise to you: Quality guaranteed and expert technical support

- Replacement or refund for products not performing as stated on the datasheet
- Valid for 12 months from date of delivery
- Response to your inquiry within 24 hours
- We provide support in Chinese, English, French, German, Japanese and Spanish
- Extensive multi-media technical resources to help you
- We investigate all quality concerns to ensure our products perform to the highest standards

If the product does not perform as described on this datasheet, we will offer a refund or replacement. For full details of the Abpromise, please visit <http://www.abcam.com/abpromise> or contact our technical team.

### Terms and conditions

- Guarantee only valid for products bought direct from Abcam or one of our authorized distributors