


Product datasheet

Anti-XRCC1 (phospho S461) antibody ab84413

2 Images

Overview

Product name	Anti-XRCC1 (phospho S461) antibody
Description	Rabbit polyclonal to XRCC1 (phospho S461)
Host species	Rabbit
Tested applications	Suitable for: IHC-P
Species reactivity	Reacts with: Mouse, Human Predicted to work with: Chimpanzee, Rhesus monkey, Gorilla, Orangutan 
Immunogen	Synthetic peptide (the amino acid sequence is considered to be commercially sensitive) corresponding to a region surrounding Serine 461 of Human XRCC1 (P18887)
Positive control	Human breast adenocarcinoma; Mouse squamous cell carcinoma.

Properties

Form	Liquid
Storage instructions	Shipped at 4°C. Upon delivery aliquot and store at -20°C. Avoid freeze / thaw cycles.
Storage buffer	Preservative: 0.09% Sodium Azide Constituents: 0.1% BSA, Tris buffered saline
Purity	Immunogen affinity purified
Clonality	Polyclonal
Isotype	IgG

Applications

Our [Abpromise guarantee](#) covers the use of **ab84413** in the following tested applications.

The application notes include recommended starting dilutions; optimal dilutions/concentrations should be determined by the end user.

Application	Abreviews	Notes
-------------	-----------	-------

IHC-P

Application notes	IHC-P: 1/100 - 1/500. Antigen retrieval with citrate buffer will enhance staining. Note: expected to work on frozen sections.
--------------------------	--

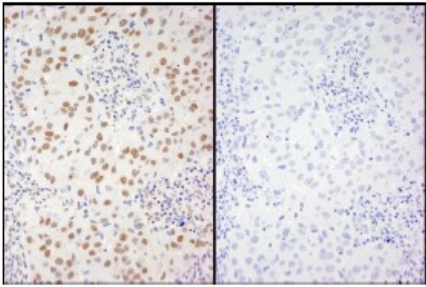
Not yet tested in other applications.

Optimal dilutions/concentrations should be determined by the end user.

Target

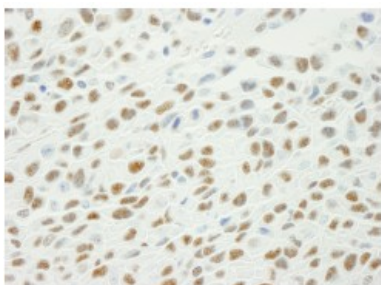
Function	Corrects defective DNA strand-break repair and sister chromatid exchange following treatment with ionizing radiation and alkylating agents.
Sequence similarities	Contains 2 BRCT domains.
Post-translational modifications	Phosphorylation of Ser-371 causes dimer dissociation. Phosphorylation by CK2 promotes interaction with APTX and APLF. Sumoylated.
Cellular localization	Nucleus. Accumulates at sites of DNA damage.

Images



Immunohistochemistry analysis of two serial sections of formalin-fixed, paraffin-embedded Human breast adenocarcinoma, using 1/250 ab84413 followed by DAB staining. Left panel: mock phosphatase treated; Right panel: calf intestinal phosphatase-treated.

Immunohistochemistry (Formalin/PFA-fixed paraffin-embedded sections) - Anti- γ H2AX (phospho S139) antibody (ab84413)



Immunohistochemistry analysis of formalin-fixed, paraffin-embedded Mouse squamous cell carcinoma, using 1/250 ab84413 followed DAB staining.

Immunohistochemistry (Formalin/PFA-fixed paraffin-embedded sections) - Anti- γ H2AX (phospho S139) antibody (ab84413)

Please note: All products are "FOR RESEARCH USE ONLY AND ARE NOT INTENDED FOR DIAGNOSTIC OR THERAPEUTIC USE"

Our Abpromise to you: Quality guaranteed and expert technical support

- Replacement or refund for products not performing as stated on the datasheet
- Valid for 12 months from date of delivery
- Response to your inquiry within 24 hours

- We provide support in Chinese, English, French, German, Japanese and Spanish
- Extensive multi-media technical resources to help you
- We investigate all quality concerns to ensure our products perform to the highest standards

If the product does not perform as described on this datasheet, we will offer a refund or replacement. For full details of the Abpromise, please visit <http://www.abcam.com/abpromise> or contact our technical team.

Terms and conditions

- Guarantee only valid for products bought direct from Abcam or one of our authorized distributors