


Product datasheet

Anti-ZBPB1 antibody ab97691

2 Images

Overview

<b>Product name</b>	Anti-ZBPB1 antibody
<b>Description</b>	Rabbit polyclonal to ZBPB1
<b>Host species</b>	Rabbit
<b>Tested applications</b>	<b>Suitable for:</b> WB, IHC-P
<b>Species reactivity</b>	<b>Reacts with:</b> Human <b>Predicted to work with:</b> Cow, Pig 
<b>Immunogen</b>	Recombinant fragment, corresponding to a sequence within amino acids 29-285 of Human ZBPB1 (NP_008940).
<b>Positive control</b>	WB: 293T, A431, H1299 or HeLaS3 cell lysate; IHC-P: SCC25 xenograft tissue.

Properties

<b>Form</b>	Liquid
<b>Storage instructions</b>	Shipped at 4°C. Upon delivery aliquot and store at -20°C or -80°C. Avoid repeated freeze / thaw cycles.
<b>Storage buffer</b>	Preservative: 0.01% Thimerosal (merthiolate) Constituents: 10% Glycerol, 0.1M Tris, 0.1M Glycine, pH 7.0
<b>Purity</b>	Immunogen affinity purified
<b>Clonality</b>	Polyclonal
<b>Isotype</b>	IgG

Applications

Our [Abpromise guarantee](#) covers the use of **ab97691** in the following tested applications.

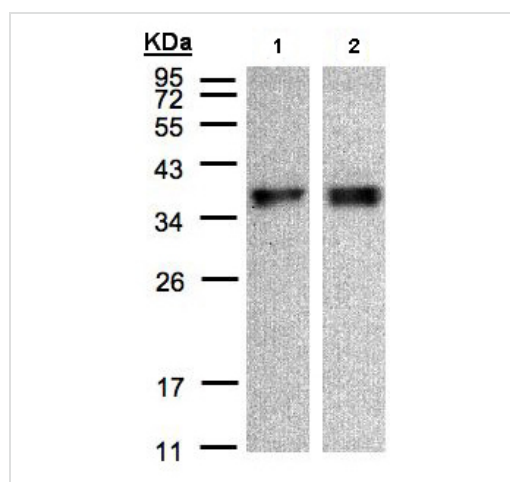
The application notes include recommended starting dilutions; optimal dilutions/concentrations should be determined by the end user.

Application	Abreviews	Notes
WB		1/500 - 1/3000. Predicted molecular weight: 40 kDa.
IHC-P		1/100.

## Target

<b>Relevance</b>	ZPBP1 is one of several proteins that are thought to participate in secondary binding between acrosome-reacted sperm and the egg-specific extracellular matrix, the zona pellucida
<b>Cellular localization</b>	Secreted

## Images



Western blot - Anti-ZPBP1 antibody (ab97691)

**All lanes :** Anti-ZPBP1 antibody (ab97691) at 1/500 dilution

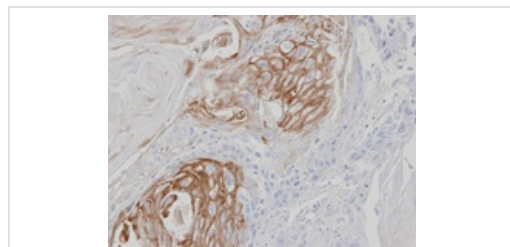
**Lane 1 :** A431 whole cell lysate

**Lane 2 :** HeLa S3 whole cell lysate

Lysates/proteins at 30 µg per lane.

**Predicted band size:** 40 kDa

12% SDS-PAGE.



Immunohistochemistry (Formalin/PFA-fixed paraffin-embedded sections) - Anti-ZPBP1 antibody (ab97691)

ab97691 at 1/100 dilution staining ZPBP1 in paraffin-embedded SCC25 xenograft tissue by immunohistochemistry.

**Please note:** All products are "FOR RESEARCH USE ONLY AND ARE NOT INTENDED FOR DIAGNOSTIC OR THERAPEUTIC USE"

## Our Abpromise to you: Quality guaranteed and expert technical support

- Replacement or refund for products not performing as stated on the datasheet
- Valid for 12 months from date of delivery
- Response to your inquiry within 24 hours
- We provide support in Chinese, English, French, German, Japanese and Spanish
- Extensive multi-media technical resources to help you

- We investigate all quality concerns to ensure our products perform to the highest standards

If the product does not perform as described on this datasheet, we will offer a refund or replacement. For full details of the Abpromise, please visit <http://www.abcam.com/abpromise> or contact our technical team.

### **Terms and conditions**

---

- Guarantee only valid for products bought direct from Abcam or one of our authorized distributors