

## Product datasheet

# Anti-PAPP A antibody [18A10] ab10196

[1 References](#) [1 Image](#)

### Overview

<b>Product name</b>	Anti-PAPP A antibody [18A10]
<b>Description</b>	Mouse monoclonal [18A10] to PAPP A
<b>Tested applications</b>	<b>Suitable for:</b> WB, ELISA
<b>Species reactivity</b>	<b>Reacts with:</b> Human
<b>Immunogen</b>	Purified human PAPPA antigen
<b>General notes</b>	Concentration varies from lot to lot and can be provided on request.

### Properties

<b>Form</b>	Liquid
<b>Storage instructions</b>	Shipped at 4°C. Upon delivery aliquot and store at -20°C. Avoid freeze / thaw cycles.
<b>Storage buffer</b>	Preservative: 0.1% Sodium Azide Constituents: PBS, pH 7.4
<b>Purity</b>	Protein A purified
<b>Purification notes</b>	Purified by chromatography on protein A. Purity tested by electrophoresis
<b>Clonality</b>	Monoclonal
<b>Clone number</b>	18A10
<b>Myeloma</b>	Sp2/0
<b>Isotype</b>	IgG2a

### Applications

Our [Abpromise guarantee](#) covers the use of **ab10196** in the following tested applications.

The application notes include recommended starting dilutions; optimal dilutions/concentrations should be determined by the end user.

Application	Abreviews	Notes
WB		
ELISA		

## Application notes

ELISA: Use at an assay dependent dilution.

WB: Use at an assay dependent dilution. Detects a band of approximately 200 kDa under reducing conditions. (predicted molecular weight: 195 kDa).

Not tested in other applications.

Optimal dilutions/concentrations should be determined by the end user.

## Target

### Function

Metalloproteinase which specifically cleaves IGFBP-4 and IGFBP-5, resulting in release of bound IGF. Cleavage of IGFBP-4 is dramatically enhanced by the presence of IGF, whereas cleavage of IGFBP-5 is slightly inhibited by the presence of IGF.

### Tissue specificity

High levels in placenta and pregnancy serum. In placenta, expressed in X cells in septa and anchoring villi, and in syncytiotrophoblasts in the chorionic villi. Lower levels are found in a variety of other tissues including kidney, myometrium, endometrium, ovaries, breast, prostate, bone marrow, colon, fibroblasts and osteoblasts.

### Sequence similarities

Belongs to the peptidase M43B family.  
Contains 5 Sushi (CCP/SCR) domains.

### Developmental stage

Present in serum and placenta during pregnancy; levels increase throughout pregnancy.

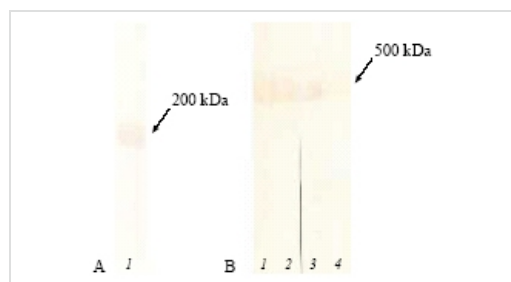
### Post-translational modifications

There appear to be no free sulfhydryl groups.

### Cellular localization

Secreted.

## Images



Western blot - PAPP A antibody [18A10] (ab10196)

**Predicted band size : 195 kDa**

Detection of human PAPP-A by ab10196 in Western Blotting. A. ab10196 recognizes PAPP-A subunit after SDS-gel electrophoresis in reducing conditions (gradient gel 5 % – 15 %) B. ab10196 recognizes heterotetrameric complex (gradient gel 2.5 % – 10 %)

**Please note:** All products are "FOR RESEARCH USE ONLY AND ARE NOT INTENDED FOR DIAGNOSTIC OR THERAPEUTIC USE"

## Our Abpromise to you: Quality guaranteed and expert technical support

- Replacement or refund for products not performing as stated on the datasheet
- Valid for 12 months from date of delivery

- Response to your inquiry within 24 hours
- We provide support in Chinese, English, French, German, Japanese and Spanish
- Extensive multi-media technical resources to help you
- We investigate all quality concerns to ensure our products perform to the highest standards

If the product does not perform as described on this datasheet, we will offer a refund or replacement. For full details of the Abpromise, please visit <http://www.abcam.com/abpromise> or contact our technical team.

### **Terms and conditions**

---

- Guarantee only valid for products bought direct from Abcam or one of our authorized distributors