


Product datasheet

Anti-Aly antibody ab101981

2 Images

Overview

| | |
|----------------------------|---|
| Product name | Anti-Aly antibody |
| Description | Rabbit polyclonal to Aly |
| Tested applications | Suitable for: IHC-P, IP Unsuitable for: WB |
| Species reactivity | Reacts with: Human Predicted to work with: Mouse, Rat, Cow, Xenopus laevis, Chimpanzee, Zebrafish, Rhesus monkey, Gorilla, Orangutan, Xenopus tropicalis, Elephant  |
| Immunogen | Synthetic peptide corresponding to a region between residue 75 and 125 of Human Aly (AAH52302.1). |
| Positive control | 293T whole cell lysate |

Properties

| | |
|-----------------------------|---|
| Form | Liquid |
| Storage instructions | Shipped at 4°C. Upon delivery aliquot and store at -20°C. Avoid freeze / thaw cycles. |
| Storage buffer | Preservative: 0.09% Sodium Azide Constituents: Tris citrate/phosphate buffer, pH 7-8 |
| Purity | Immunogen affinity purified |
| Clonality | Polyclonal |
| Isotype | IgG |

Applications

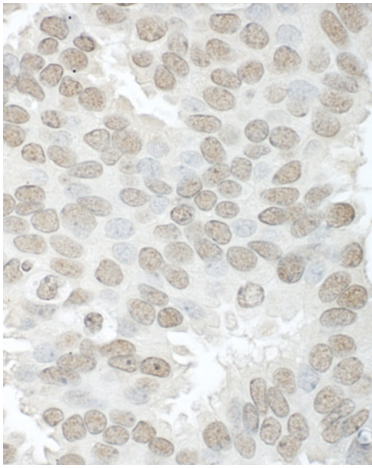
Our [Abpromise guarantee](#) covers the use of **ab101981** in the following tested applications.

The application notes include recommended starting dilutions; optimal dilutions/concentrations should be determined by the end user.

| Application | Abreviews | Notes |
|-------------|-----------|--|
| IHC-P | | 1/500 - 1/2000. Perform heat mediated antigen retrieval with citrate buffer pH 6 before commencing with IHC staining protocol. |

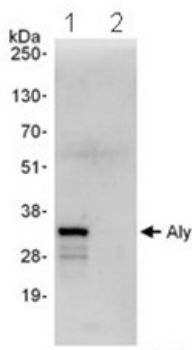
| Application | Abreviews | Notes |
|---|-----------|---|
| IP | | Use at 2-5 µg/mg of lysate. |
| Application notes | | Is unsuitable for WB. |
| Target | | |
| Function | | <p>Component of the THO subcomplex of the TREX complex. The TREX complex specifically associates with spliced mRNA and not with unspliced pre-mRNA. It is recruited to spliced mRNAs by a transcription-independent mechanism. Binds to mRNA upstream of the exon-junction complex (EJC) and is recruited in a splicing- and cap-dependent manner to a region near the 5' end of the mRNA where it functions in mRNA export. The recruitment occurs via an interaction between THOC4 and the cap-binding protein NCBP1. DDX39B functions as a bridge between THOC4 and the THO complex. TREX complex is essential for the export of Kaposi's sarcoma-associated herpesvirus (KSHV) intronless mRNAs and infectious virus production. The recruitment of the TREX complex to the intronless viral mRNA occurs via an interaction between KSHV ORF57 protein and THOC4. THOC4 in conjunction with THOC5 functions in NXF1-NXT1 mediated nuclear export of HSP70 mRNA.</p> <p>Component of a splicing-dependent multiprotein exon junction complex (EJC) deposited at splice junction on mRNAs. The EJC is a dynamic structure consisting of a few core proteins and several more peripheral nuclear and cytoplasmic associated factors that join the complex only transiently either during EJC assembly or during subsequent mRNA metabolism. Acts as chaperone and promotes the dimerization of transcription factors containing basic leucine zipper (bZIP) domains and thereby promotes transcriptional activation. Plays a role in mRNA processing and export. May function as scaffold that mediates interactions between proteins and/or RNA. Is part of the exon junction complex that remains associated with spliced mRNA and plays an important role in mRNA export and nonsense-mediated RNA decay. Directs mRNA derived from Herpes simplex virus intron-less genes to the NXF1-mediated export pathway.</p> |
| Sequence similarities | | <p>Belongs to the THOC4 family.</p> <p>Contains 1 RRM (RNA recognition motif) domain.</p> |
| Post-translational modifications | | <p>Arg-50 and Arg-204 are dimethylated, probably to asymmetric dimethylarginine.</p> <p>Phosphorylated upon DNA damage, probably by ATM or ATR.</p> |
| Cellular localization | | <p>Nucleus. Nucleus speckle. Cytoplasm. Colocalizes with the core EJC, THOC4, NXF1 and DDX39B in the nucleus and nuclear speckles. Travels to the cytoplasm as part of the exon junction complex (EJC) bound to mRNA.</p> |

Images



Immunohistochemistry (Formalin/PFA-fixed paraffin-embedded sections) analysis of human breast carcinoma tissue labelling Aly with ab101981 at 1/1000 (1µg/ml). Detection: DAB.

Immunohistochemistry (Formalin/PFA-fixed paraffin-embedded sections) - Anti-Aly antibody (ab101981)



Detection of Aly by Western Blot of Immunoprecipitate.

Lane 1: ab101979 at 1µg/ml staining Aly in 293T whole cell lysate immunoprecipitated using ab101981 at 3µg/mg lysate (1 mg/IP; 20% of IP loaded/lane).

Lane 2: Control IgG

Detection: Chemiluminescence with an exposure time of 10 seconds.

Immunoprecipitation - Aly antibody (ab101981)

Please note: All products are "FOR RESEARCH USE ONLY AND ARE NOT INTENDED FOR DIAGNOSTIC OR THERAPEUTIC USE"

Our Abpromise to you: Quality guaranteed and expert technical support

- Replacement or refund for products not performing as stated on the datasheet
- Valid for 12 months from date of delivery
- Response to your inquiry within 24 hours
- We provide support in Chinese, English, French, German, Japanese and Spanish
- Extensive multi-media technical resources to help you
- We investigate all quality concerns to ensure our products perform to the highest standards

If the product does not perform as described on this datasheet, we will offer a refund or replacement. For full details of the Abpromise, please visit <http://www.abcam.com/abpromise> or contact our technical team.

Terms and conditions

- Guarantee only valid for products bought direct from Abcam or one of our authorized distributors