

Product datasheet

Anti-FOXRED1 antibody ab102990

1 Image

Overview

Product name	Anti-FOXRED1 antibody
Description	Rabbit polyclonal to FOXRED1
Host species	Rabbit
Tested applications	Suitable for: WB
Species reactivity	Reacts with: Human
Immunogen	Synthetic peptide conjugated to KLH, corresponding to a region within C terminal amino acids 355-384 of Human FOXRED1
Positive control	NCI-H460 cell line

Properties

Form	Liquid
Storage instructions	Shipped at 4°C. Store at 4°C (up to 6 months). Store at -20°C long term.
Storage buffer	Preservative: 0.09% Sodium Azide Constituents: PBS
Purity	Immunogen affinity purified
Purification notes	This antibody is purified through a protein A column, followed by peptide affinity purification.
Clonality	Polyclonal
Isotype	IgG

Applications

Our [Abpromise guarantee](#) covers the use of **ab102990** in the following tested applications.

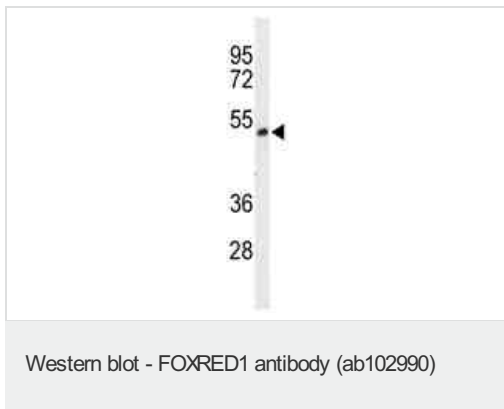
The application notes include recommended starting dilutions; optimal dilutions/concentrations should be determined by the end user.

Application	Abreviews	Notes
WB		1/100 - 1/500. Predicted molecular weight: 54 kDa.

Target

Function	Required for the assembly of the mitochondrial membrane respiratory chain NADH dehydrogenase (Complex I) (PubMed:20858599, PubMed:25678554). Involved in mid-late stages of complex I assembly (PubMed:25678554).
Involvement in disease	Mitochondrial complex I deficiency
Cellular localization	Mitochondrion inner membrane. According to a report, it is associated with the matrix face of the mitochondrial inner membrane and does not contain any transmembrane region. However, one transmembrane domain is clearly predicted by different methods (Probable).

Images



Anti-FOXRED1 antibody (ab102990) at 1/100 dilution + NCI-H460 cell lysate at 35 µg

Predicted band size: 54 kDa

Please note: All products are "FOR RESEARCH USE ONLY AND ARE NOT INTENDED FOR DIAGNOSTIC OR THERAPEUTIC USE"

Our Abpromise to you: Quality guaranteed and expert technical support

- Replacement or refund for products not performing as stated on the datasheet
- Valid for 12 months from date of delivery
- Response to your inquiry within 24 hours
- We provide support in Chinese, English, French, German, Japanese and Spanish
- Extensive multi-media technical resources to help you
- We investigate all quality concerns to ensure our products perform to the highest standards

If the product does not perform as described on this datasheet, we will offer a refund or replacement. For full details of the Abpromise, please visit <http://www.abcam.com/abpromise> or contact our technical team.

Terms and conditions

- Guarantee only valid for products bought direct from Abcam or one of our authorized distributors