

Product datasheet

Anti-IPO11 antibody ab102995

1 Image

Overview

| | |
|----------------------------|--|
| Product name | Anti-IPO11 antibody |
| Description | Rabbit polyclonal to IPO11 |
| Host species | Rabbit |
| Tested applications | Suitable for: WB |
| Species reactivity | Reacts with: Human |
| Immunogen | Synthetic peptide conjugated to KLH, corresponding to a region within C terminal amino acids 906-970 of Human IPO11 (Q9UI26) |
| Positive control | CEM cell lysate |

Properties

| | |
|-----------------------------|---|
| Form | Liquid |
| Storage instructions | Shipped at 4°C. Store at 4°C (up to 6 months). Store at -20°C long term. |
| Storage buffer | Preservative: 0.09% Sodium Azide Constituents: PBS |
| Purity | Immunogen affinity purified |
| Purification notes | Purified through a protein A column, followed by peptide affinity purification. |
| Clonality | Polyclonal |
| Isotype | IgG |

Applications

Our [Abpromise guarantee](#) covers the use of **ab102995** in the following tested applications.

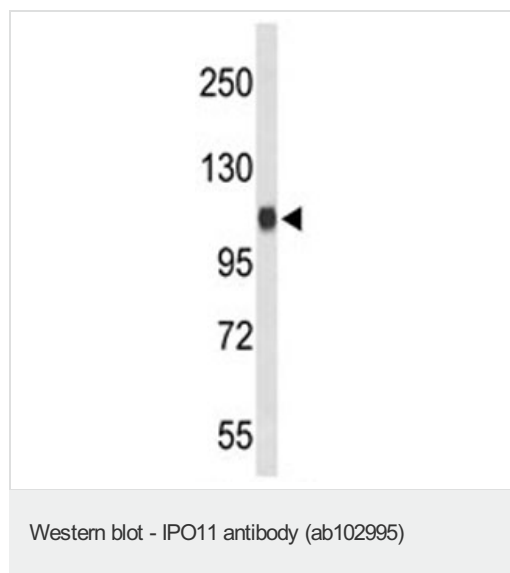
The application notes include recommended starting dilutions; optimal dilutions/concentrations should be determined by the end user.

| Application | Abreviews | Notes |
|-------------|-----------|---|
| WB | | 1/100 - 1/500. Predicted molecular weight: 113 kDa. |

Target

| | |
|------------------------------|---|
| Function | Functions in nuclear protein import as nuclear transport receptor. Serves as receptor for nuclear localization signals (NLS) in cargo substrates. Is thought to mediate docking of the importin/substrate complex to the nuclear pore complex (NPC) through binding to nucleoporin and the complex is subsequently translocated through the pore by an energy requiring, Ran-dependent mechanism. At the nucleoplasmic side of the NPC, Ran binds to the importin, the importin/substrate complex dissociates and importin is re-exported from the nucleus to the cytoplasm where GTP hydrolysis releases Ran. The directionality of nuclear import is thought to be conferred by an asymmetric distribution of the GTP- and GDP-bound forms of Ran between the cytoplasm and nucleus (By similarity). Mediates the nuclear import of UBE2E3, and of RPL12. |
| Sequence similarities | Belongs to the importin beta family. Contains 15 HEAT repeats. Contains 1 importin N-terminal domain. |
| Cellular localization | Cytoplasm. Nucleus. |

Images



Anti-IPO11 antibody (ab102995) at 1/100 dilution + CEM cell line lysate at 35 µg

Predicted band size: 113 kDa

Please note: All products are "FOR RESEARCH USE ONLY AND ARE NOT INTENDED FOR DIAGNOSTIC OR THERAPEUTIC USE"

Our Abpromise to you: Quality guaranteed and expert technical support

- Replacement or refund for products not performing as stated on the datasheet
- Valid for 12 months from date of delivery
- Response to your inquiry within 24 hours
- We provide support in Chinese, English, French, German, Japanese and Spanish
- Extensive multi-media technical resources to help you
- We investigate all quality concerns to ensure our products perform to the highest standards

If the product does not perform as described on this datasheet, we will offer a refund or replacement. For full details of the Abpromise, please visit <http://www.abcam.com/abpromise> or contact our technical team.

Terms and conditions

- Guarantee only valid for products bought direct from Abcam or one of our authorized distributors