

Product datasheet

Anti-Desmoglein 1 antibody ab103473

2 Images

Overview

Product name	Anti-Desmoglein 1 antibody
Description	Rabbit polyclonal to Desmoglein 1
Tested applications	Suitable for: WB
Species reactivity	Reacts with: Human
Immunogen	Full length Human protein (AA153002.1)
Positive control	Jurkat cell and Desmoglein 1 transfected 293T cell lysates

Properties

Form	Liquid
Storage instructions	Shipped at 4°C. Upon delivery aliquot. Store at -20°C or -80°C. Avoid freeze / thaw cycle.
Storage buffer	Preservative: None Constituents: 1X PBS, pH 7.2
Purity	Protein A purified
Clonality	Polyclonal
Isotype	IgG

Applications

Our [Abpromise guarantee](#) covers the use of **ab103473** in the following tested applications.

The application notes include recommended starting dilutions; optimal dilutions/concentrations should be determined by the end user.

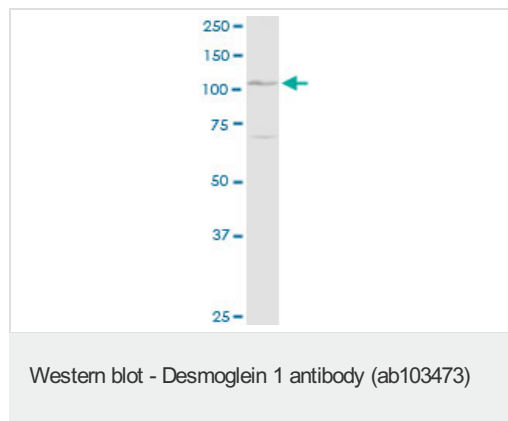
Application	Abreviews	Notes
WB		1/500 - 1/1000. Predicted molecular weight: 114 kDa.

Target

Function	Component of intercellular desmosome junctions. Involved in the interaction of plaque proteins and intermediate filaments mediating cell-cell adhesion.
-----------------	---

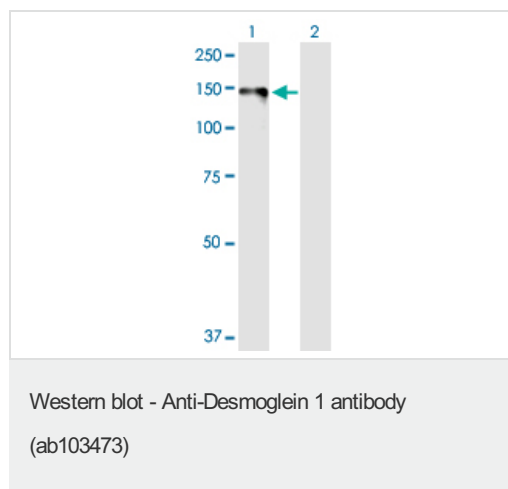
Tissue specificity	Epidermis, tongue, tonsil and esophagus.
Involvement in disease	Defects in DSG1 are the cause of palmoplantar keratoderma striate type 1 (SPPK1) [MIM:148700]; also known as keratosis palmoplantaris striata I. SPPK1 is a dermatological disorder characterized by thickening of the skin on the palms and soles, and longitudinal hyperkeratotic lesions on the palms, running the length of each finger.
Sequence similarities	Contains 4 cadherin domains.
Domain	Calcium may be bound by the cadherin-like repeats.
Cellular localization	Cell membrane. Cell junction > desmosome.

Images



Anti-Desmoglein 1 antibody (ab103473) at 1/500 dilution + Jurkat cell lysate at 50 µg

Predicted band size : 114 kDa



All lanes : Anti-Desmoglein 1 antibody (ab103473) at 1/500 dilution

Lane 1 : Desmoglein 1 transfected 293T cell line lysate

Lane 2 : Non-transfected lysate

Lysates/proteins at 25 µg per lane.

Predicted band size : 114 kDa

Please note: All products are "FOR RESEARCH USE ONLY AND ARE NOT INTENDED FOR DIAGNOSTIC OR THERAPEUTIC USE"

Our Abpromise to you: Quality guaranteed and expert technical support

- Replacement or refund for products not performing as stated on the datasheet
- Valid for 12 months from date of delivery
- Response to your inquiry within 24 hours
- We provide support in Chinese, English, French, German, Japanese and Spanish
- Extensive multi-media technical resources to help you

- We investigate all quality concerns to ensure our products perform to the highest standards

If the product does not perform as described on this datasheet, we will offer a refund or replacement. For full details of the Abpromise, please visit <http://www.abcam.com/abpromise> or contact our technical team.

Terms and conditions

- Guarantee only valid for products bought direct from Abcam or one of our authorized distributors