

Product datasheet

Anti-IMPDH2 antibody ab104290

[2 Images](#)

Overview

Product name	Anti-IMPDH2 antibody
Description	Rabbit polyclonal to IMPDH2
Host species	Rabbit
Tested applications	Suitable for: ICC/IF, WB
Species reactivity	Reacts with: Human Predicted to work with: Mouse, Rat, Rabbit, Horse, Chicken, Guinea pig, Cow, Cat, Dog, Zebrafish
Immunogen	Synthetic peptide corresponding to a region within N terminal amino acids 1-50 (MADYLISGGT SYVPDDGLTA QQLFNCGDGL TYNDFLILPG YIDFTADQVD) of Human IMPDH2 (NP_000875). Run BLAST with ExPASy Run BLAST with NCBI
Positive control	721_B cell lysate

Properties

Form	Liquid
Storage instructions	Shipped at 4°C. Upon delivery aliquot and store at -20°C. Avoid repeated freeze / thaw cycles.
Storage buffer	Preservative: None Constituents: 2% Sucrose, PBS
Purity	Immunogen affinity purified
Clonality	Polyclonal
Isotype	IgG

Applications

Our [Abpromise guarantee](#) covers the use of **ab104290** in the following tested applications.

The application notes include recommended starting dilutions; optimal dilutions/concentrations should be determined by the end user.

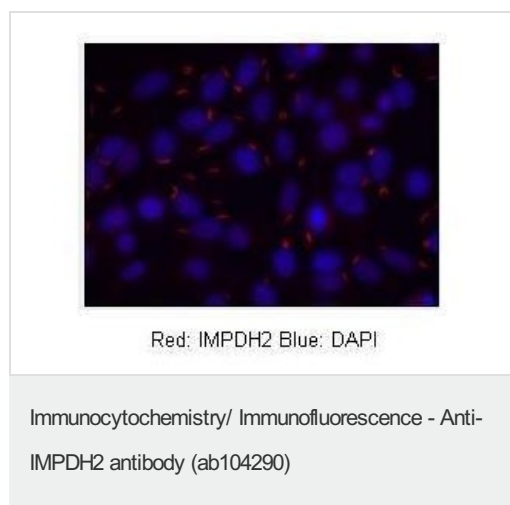
Application	Abreviews	Notes
ICC/IF		1/500.

Application	Abreviews	Notes
WB		Use a concentration of 1 µg/ml. Predicted molecular weight: 56 kDa. Good results were obtained when blocked with 5% non-fat dry milk in 0.05% PBS-T.

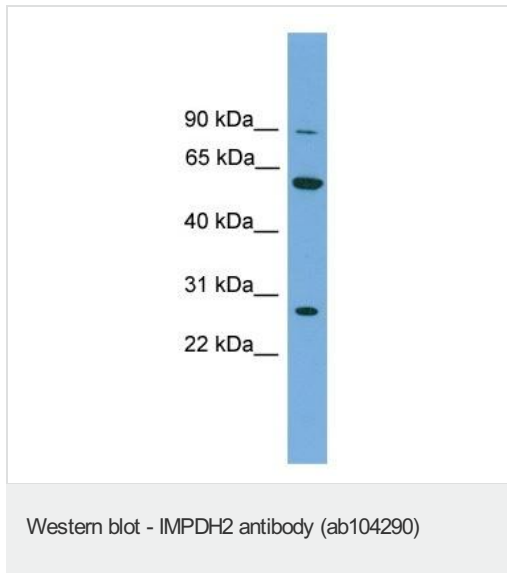
Target

Function	Rate limiting enzyme in the de novo synthesis of guanine nucleotides and therefore is involved in the regulation of cell growth. It may also have a role in the development of malignancy and the growth progression of some tumors.
Tissue specificity	IMP type I is the main species in normal leukocytes and type II predominates over type I in the tumor.
Pathway	Purine metabolism; XMP biosynthesis via de novo pathway; XMP from IMP: step 1/1.
Sequence similarities	Belongs to the IMPDH/GMPR family. Contains 2 CBS domains.
Post-translational modifications	The N-terminus is blocked.

Images



Sample Type : Human Hep-2 cells. Primary
 Antibody Dilution : 1:500. Secondary Antibody
 : Goat anti-rabbit-Alexa Fluor 568. Secondary
 Antibody Dilution : 1:400. Color/Signal
 Descriptions : Red: IMPDH2 Blue: DAPI.



Anti-IMPDH2 antibody (ab104290) at 1 µg/ml
+ 721_B cell lysate at 10 µg

Predicted band size: 56 kDa

Please note: All products are "FOR RESEARCH USE ONLY AND ARE NOT INTENDED FOR DIAGNOSTIC OR THERAPEUTIC USE"

Our Abpromise to you: Quality guaranteed and expert technical support

- Replacement or refund for products not performing as stated on the datasheet
- Valid for 12 months from date of delivery
- Response to your inquiry within 24 hours
- We provide support in Chinese, English, French, German, Japanese and Spanish
- Extensive multi-media technical resources to help you
- We investigate all quality concerns to ensure our products perform to the highest standards

If the product does not perform as described on this datasheet, we will offer a refund or replacement. For full details of the Abpromise, please visit <http://www.abcam.com/abpromise> or contact our technical team.

Terms and conditions

- Guarantee only valid for products bought direct from Abcam or one of our authorized distributors